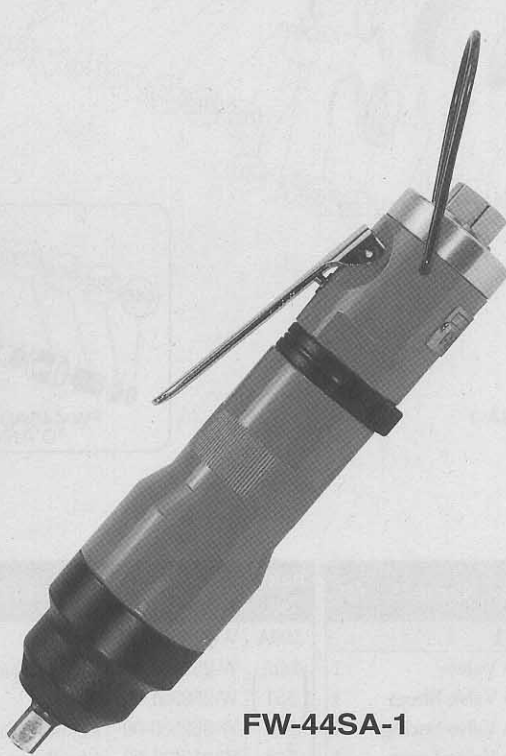




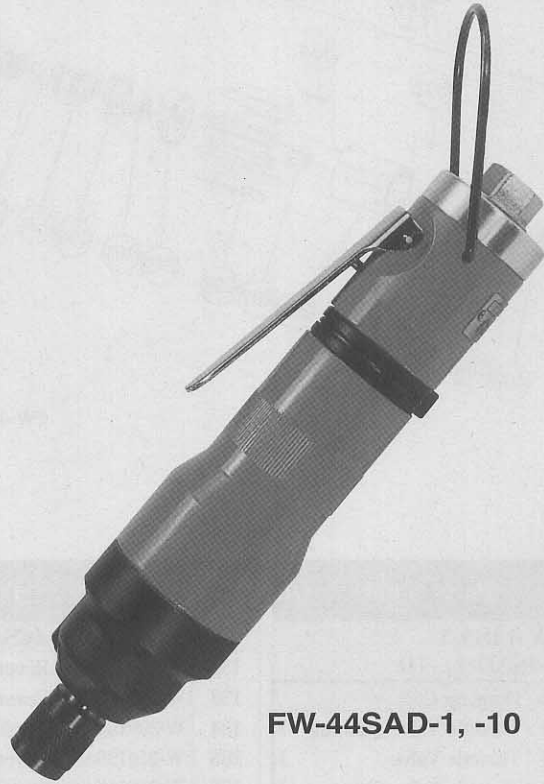
USER MANUAL

IMPACT WRENCH&DRIVER (Oil Bath Type)

MODELS : FW-44SA-1, FW-44SAD-1, -10



FW-44SA-1



FW-44SAD-1, -10

SPECIFICATIONS

Model	Capacity (Guidance)		Free Speed	Side to Center		Square Drive Size		Bit Shank Size		Overall Length		Mass		Air Consumption (Under Load)		Air Inlet Thread Size	Air Hose Size	
	mm	in		mm	in	mm	in	mm	in	mm	in	kg	lb	Nm ² /min	lit ³ /min		in	mm
FW-44SA-1	5	3/16	5,700	18.0	45/64	9.5	3/8	—	—	207	8 5/32	0.66	1.4	0.47	16.6	PTorNPT 1/4	6.3	1/4
FW-44SAD-1	5	3/16	5,700	18.0	45/64	—	—	6.35	1/4	207	8 5/32	0.66	1.4	0.47	16.6	PTorNPT 1/4	6.3	1/4
FW-44SAD-10	5	3/16	5,700	18.0	45/64	—	—	6.35	1/4	207	8 5/32	0.66	1.4	0.47	16.6	PTorNPT 1/4	6.3	1/4

The performance figures are at 0.63 MPa (6.3 bar).



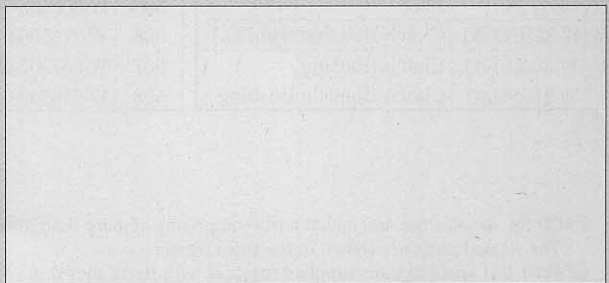
Refer to "The Instructions and Warning for Safety Use" enclosed in each tool box.

FUJI AIR TOOLS CO., LTD.

2-1-14 Kamiji, Higashinari-ku, Osaka 537-0003, Japan

Tel : (06)6972-2335

Fax : (06)6972-2250



BOLT & NUT SETTERS
SCREW DRIVERS

ABRASIVE TOOLS

DRILLS · TAPPERS

PERCUSSION TOOLS

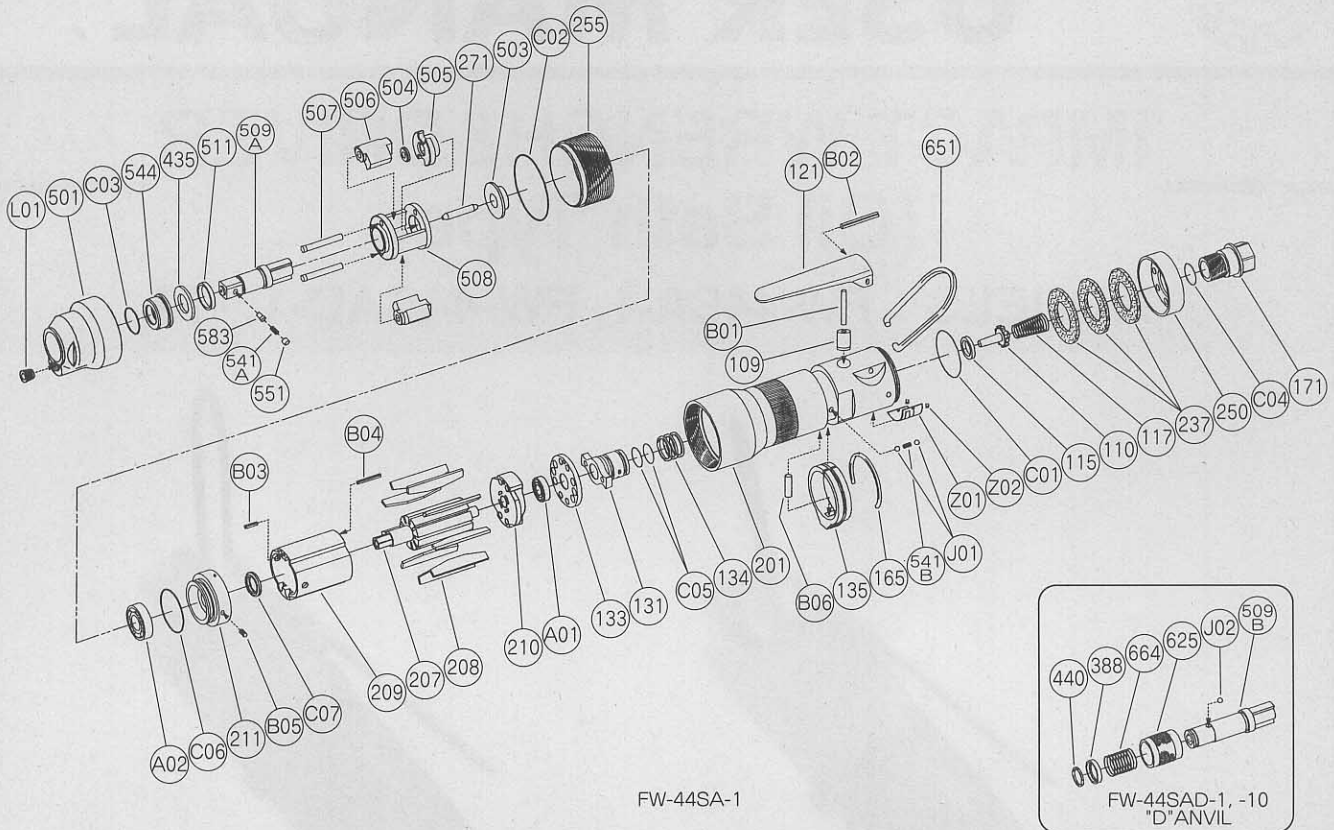
AIR MOTORS & OTHERS

OTHER PRODUCTS



EXPLODED VIEW MODEL : FW-44SA-1, FW-44SAD-1, -10

EXPLODED VIEW



FW-44SA-1

FW-44SAD-1, -10
"D" ANVIL

PARTS LIST

Index No.	Parts No.	Parts Name	Qt.	Index No.	Parts No.	Parts Name	Qt.	Index No.	Parts No.	Parts Name	Qt.
FW-44SA-1				FW-44SA-1				FW-44SAD-1, -10			
CP No.	W-318006-00	Housing C.P		131	W-299131-00	Reverse Valve	1	509A	W-306509-03	Anvil 	1
109	W-299109-00	Throttle Valve Bushing	1	133	W-299133-00	Reverse Valve Sheet	1	(541A)	W-252541-00	Button Retainer Spring <F>	1
110	W-299110-00	Throttle Valve	1	134	W-299134-00	Reverse Valve Spring	1	(551)	W-252551-00	Plug	1
115	W-299115-00	Throttle Valve Sheet	1	135	W-216135-00	Reverse Valve Spring	1	(583)	W-252583-00	Retainer Button <F>	1
117	D-001117-00	Throttle Valve Spring	1	165	W-216165-00	Reverse Valve Lever	1	511	W-215511-00	Clutch Frame Bushing	1
121	M-073121-00	Throttle Valve Lever	1	207	W-324207-00	Stop Ring	1	541B	W-252541-00	Button Retainer Spring <F>	1
171	W-299171-00	Inlet Joint <PT>	1	208	W-289208-00	Rotor	1	651	W-100651-00	Hanger	1
171	W-299171-01	Inlet Joint <NPT>	1	209	W-297209-00	Rotor Blade	9	A01	BB-EE2	Ball Bearing	1
201	W-318201-00	Housing	1	(B03)	SP-28	Cylinder	1	A02	BB-6900	Ball Bearing	1
237	W-299237-00	Muffler Pad	3	(B04)	SP-216	Spring Pin	1	B06	NR-413.5	Needle Roller	1
250	W-299250-00	Exhaust Cover	1	210	W-299210-00	Spring Pin	1	C04	O-S12.5	"O" Ring	1
B01	NR-321FR	Needle Roller	1	211	W-327211-00	Cylinder Upper Plate	1	C05	O-S12.5	"O" Ring	2
B02	SP-325	Spring Pin	1	(B05)	SP-2.55	Cylinder Lower Plate	1	C06	O-S24	"O" Ring	1
C01	O-S28F	"O" Ring	1	255	W-314255-00	Spring Pin	1	C07	O-4111	Quad Ring	1
CP No.	W-324013-00	Clutch Housing C.P		271	W-191271-00	Motor Fastening Nut	1	J01	B-3	Ball	2
C02	O-S39	"O" Ring	1	435	W-306435-00	Rotor Pin	1	Z01	NP-1000	Name Plate	1
C03	O-P12	"O" Ring	1	503	W-306435-00	Thrust Washer	1	Z02	NPN-0X3.2	Screw Rivet	2
L01	PL-1/16	Plug	1	504	W-324503-00	Spacer 	1	FW-44SAD-1, -10			
CP No.	W-324013-50	Clutch Housing Semi C.P		504	W-306504-00	Spacer <C>	1	388	W-305388-00	Spring Holder	1
501	W-324501-00	Clutch Housing	1	505	W-306505-00	Cam	1	440	W-305440-00	Ring	1
544	W-215544-01	Clutch Housing Bushing	1	506	W-215506-01	Hammer Clutch	2	509B	W-306509-00	Anvil <D> <For FW-44SAD-1>	1
				507	W-067507-00	Clutch Pin	2	509B	W-306509-01	Anvil <D> <For FW-44SAD-10>	1
				508	W-215508-01	Clutch Frame	1	625	W-305625-00	Bit Cover	1
								664	W-305664-00	Finder Spring	1
								J02	B-3	Ball	1

- CP No. denotes the assembled parts comprising of more than 1 pc. of parts.
The related parts are shown in the thick frame.
- #209, 211 and 509A are supplied together with parts shown in ().
- Specify parts number and quantity in ordering.