



USER MANUAL

IMPACT WRENCH&DRIVER (Oil Bath Type)

MODELS : FW-44PA-2, FW-44PAD-2, -20

BOLT & NUT SETTERS
SCREW DRIVERS

ABRASIVE TOOLS

DRILLS · TAPPERS

PERCUSSION TOOLS

AIR MOTORS & OTHERS

OTHER PRODUCTS



FW-44PA-2



FW-44PAD-2, -20

SPECIFICATIONS

Model	Capacity (Guidance)		Free Speed	Side to Center		Square Drive Size		Bit Shank Size		Overall Length		Mass		Air Consumption (Under Load)		Air Inlet Thread Size		Air Hose Size	
	mm	in	min ⁻¹	mm	in	mm	in	mm	in	mm	in	kg	lb	Nm ² /min	Nft ² /min	in	mm	in	
FW-44PA-2	5	3/16	6,500	18.0	45/64	9.5	3/8	—	—	131	5 5/32	0.78	1.7	0.60	21.2	PT or NPT	1/4	6.3	1/4
FW-44PAD-2	5	3/16	6,500	18.0	45/64	—	—	6.35	1/4	132	5 3/16	0.78	1.7	0.60	21.2	PT or NPT	1/4	6.3	1/4
FW-44PAD-20	5	3/16	6,500	18.0	45/64	—	—	6.35	1/4	132	5 3/16	0.78	1.7	0.60	21.2	PT or NPT	1/4	6.3	1/4

The performance figures are at 0.63 MPa (6.3 bar).



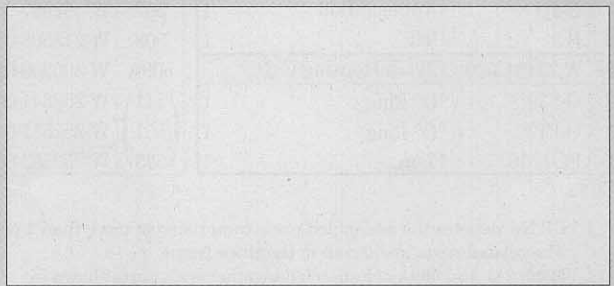
Refer to "The Instructions and Warning for Safety Use" enclosed in each tool box.

FUJI AIR TOOLS CO., LTD.

2-1-14 Kamiji, Higashinari-ku, Osaka 537-0003, Japan

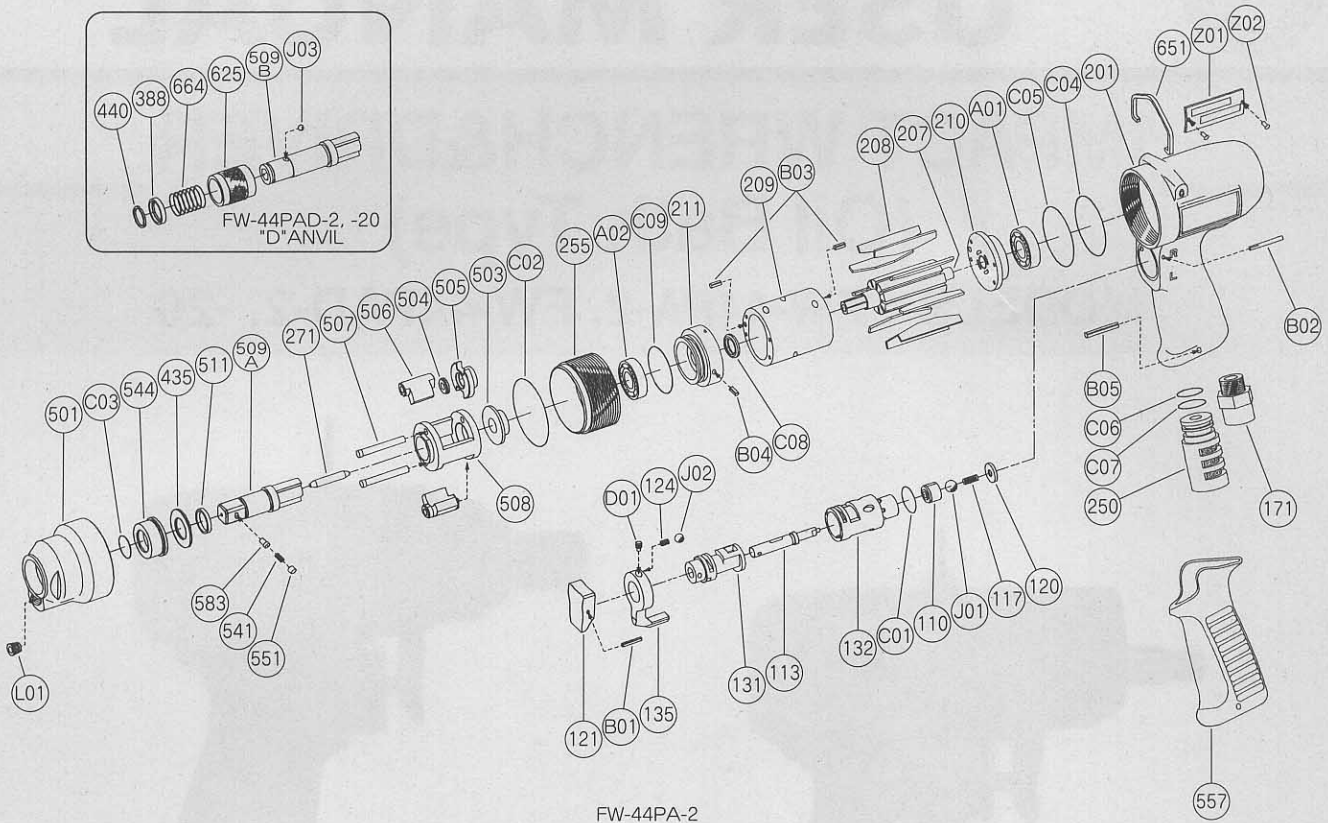
Tel : (06)6972-2335

Fax : (06)6972-2250



EXPLODED VIEW MODEL : FW-44PA-2, FW-44PAD-2, -20

EXPLODED VIEW



PARTS LIST

Index No.	Parts No.	Parts Name	Qt.	Index No.	Parts No.	Parts Name	Qt.	Index No.	Parts No.	Parts Name	Qt.
FW-44PA-2				CP No.	W-324013-50	Clutch Housing Semi C. P		511	W-215511-00	Clutch Frame Bushing	1
FW-44PAD-2, -20				501	W-324501-00	Clutch Housing	1	557	W-276557-00	Rubber Protector	1
CP No.	W-285006-04	Housing C. P		544	W-215544-01	Clutch Housing Bushing 1		651	W-225651-00	Hanger	1
110	W-276110-01	Throttle Valve	1	FW-44PA-2				A01	BB-EE2	Ball Bearing	1
113	W-276113-01	Throttle Valve Rod	1	207	W-324207-00	Rotor	1	A02	BB-6900	Ball Bearing	1
117	W-276117-00	Throttle Valve Spring	1	208	W-289208-00	Rotor Blade	9	B05	SP-320	Spring Pin	1
120	W-276120-01	Throttle Valve Cover	1	209	W-289209-00	Cylinder	1	C04	O-S34	"O" Ring	1
121	W-254121-00	Throttle Valve Lever	1	(B03)	SP-2.56	Spring Pin	2	C05	O-S34	"O" Ring	1
124	W-254124-00	Knock Spring	1	210	W-276210-01	Cylinder Upper Plate	1	C06	O-S14	"O" Ring	1
131	W-276131-00	Reverse Valve	1	211	W-314211-00	Cylinder Lower Plate	1	C07	O-S15	"O" Ring	1
132	W-276132-01	Reverse Valve Bushing	1	(B04)	SP-2.55	Spring Pin	1	C08	O-4111	Quad Ring	1
135	W-254135-00	Reverse Valve Lever	1	250	W-306250-00	Exhaust Cover	1	C09	O-S24	"O" Ring	1
171	W-276171-00	Inlet Bushing <PT>	1	255	W-314255-00	Motor Fastening Nut	1	Z01	NP-1108	Name Plate	1
171	W-276171-01	Inlet Bushing <NPT>	1	271	W-191271-00	Rotor Pin	1	Z02	NPN-0X3.2	Screw Rivet	2
201	W-285201-01	Housing	1	435	W-306435-00	Thrust Washer	1	FW-44PAD-2, -20			
B01	SP-212	Spring Pin	1	503	W-324503-00	Spacer 	1	388	W-305388-00	Spring Holder	1
B02	GP-220GLC	Grooved Pin	1	504	W-306504-00	Spacer <C>	1	440	W-305440-00	Ring	1
C01	O-S15	"O" Ring	1	505	W-306505-00	Cam	1	509B	W-306509-00	Anvil <D> <For FW-44PAD-2>	1
D01	SS-46D	Set Screw	1	506	W-215506-01	Hammer Clutch	2	509B	W-306509-01	Anvil <D> <For FW-44PAD-20>	1
J01	B-4U	Urethane Ball	1	507	W-067507-00	Clutch Pin	2	625	W-305625-00	Bit Cover	1
J02	B-3	Ball	1	508	W-215508-01	Clutch Frame	1	664	W-305664-00	Finder Spring	1
CP No.	W-324013-00	Clutch Housing C. P		509A	W-306509-05	Anvil 	1	J03	B-3	Ball	1
C02	O-S39	"O" Ring	1	(541)	W-252541-00	Button Retainer Spring <F>	1	Z01	NP-1107	Name Plate	1
C03	O-P12	"O" Ring	1	(551)	W-252551-00	Plug	1				
L01	PL-1/16	Plug	1	(583)	W-252583-00	Retainer Button <F>	1				

- CP No. denotes the assembled parts comprising of more than 1 pc. of parts.
The related parts are shown in the thick frame.
- #209, 211 and 509A are supplied together with parts shown in ().
- Specify parts number and quantity in ordering.