



# USER MANUAL

## IMPACT WRENCHES

MODELS : FW-250-1, -1C, -2, -2C



FW-250-1C  
FW-250-2C

FW-250-1  
FW-250-2

### SPECIFICATIONS

Model	Capacity Bolt size (Guidance)		Free Speed (about)	Side to Center (about)		Square Drive Size		Overall Length (without socket) (about)		Weight (without socket) (about)		Air Consumption Under Load (about)		Air Inlet Thread Size	Air Hose Size	
	mm	in		mm	in	mm	in	mm	in	kg	lb	m <sup>3</sup> /min	ft <sup>3</sup> /min		mm	in
FW-250-1	24	1	5,000	36.5	1 <sup>7</sup> / <sub>16</sub>	25.4	1	302	11 <sup>57</sup> / <sub>64</sub>	6.0	13.2	0.7	24.7	1/2	12.7	1/2
FW-250-1C	24	1	5,000	36.5	1 <sup>7</sup> / <sub>16</sub>	25.4	1	302	11 <sup>57</sup> / <sub>64</sub>	6.0	13.2	0.7	24.7	1/2	12.7	1/2
FW-250-2	24	1	5,000	36.5	1 <sup>7</sup> / <sub>16</sub>	19.0	3/4	302	11 <sup>57</sup> / <sub>64</sub>	6.0	13.2	0.7	24.7	1/2	12.7	1/2
FW-250-2C	24	1	5,000	36.5	1 <sup>7</sup> / <sub>16</sub>	19.0	3/4	302	11 <sup>57</sup> / <sub>64</sub>	6.0	13.2	0.7	24.7	1/2	12.7	1/2

The performance figures are at 6.2 bar.

⚠ Refer to instructions and warning for safety use enclosed in each tool box.

## FUJI AIR TOOLS CO., LTD.

1-14, Kamiji 2-chome, Higashinari-ku, Osaka 537, Japan

Tel : (06) 972-2335

Fax : (06) 972-2250

BOLT & NUT SETTERS  
SCREW DRIVERS

ABRASIVE TOOLS

DRILLS · TAPPERS

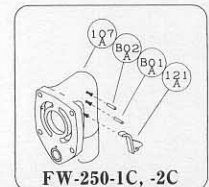
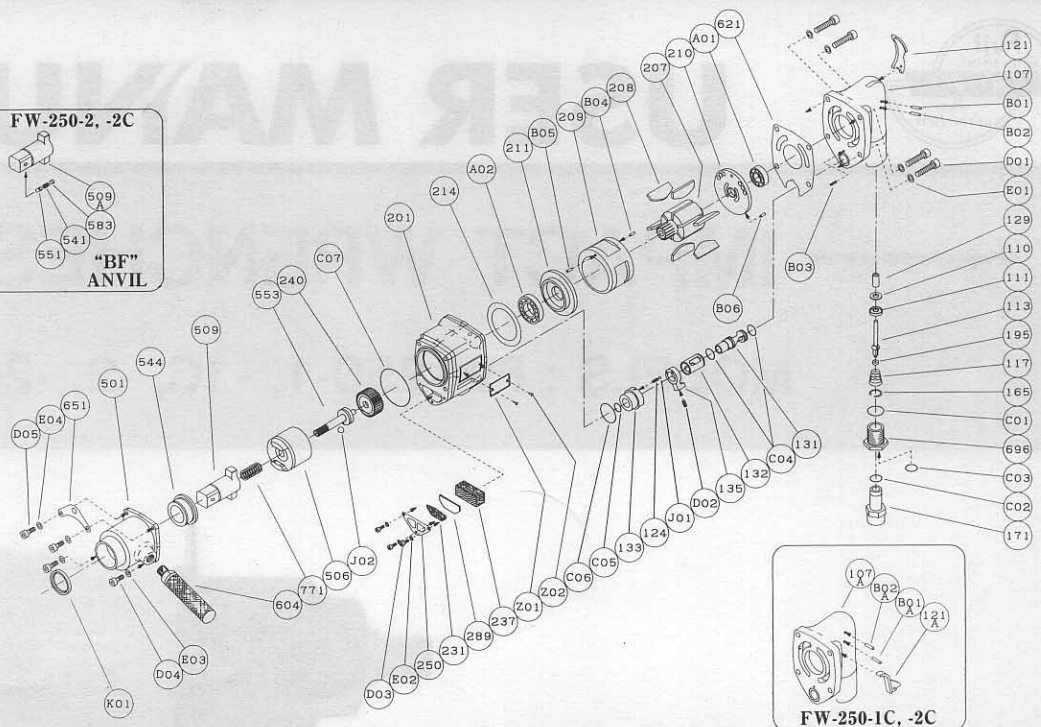
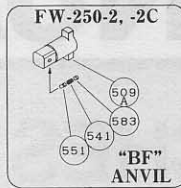
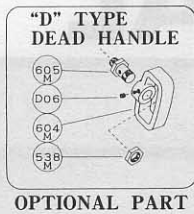
PERCUSSION TOOLS

AIR MOTORS & OTHERS

OTHER PRODUCTS

# PARTS LIST MODEL: FW-250-1, -1C, -2, -2C

## EXPLODED VIEW



## PARTS LIST

Index No.	Parts No.	Parts Name	Qt.	Index No.	Parts No.	Parts Name	Qt.	Index No.	Parts No.	Parts Name	Qt.
<b>FW-250-1, -2</b>											
CP No.	<b>W-295002-00</b>	<b>Handle CP</b>		CP No.	<b>W-154020-00</b>	<b>Inlet Bushing CP</b>		A01	BB-6003	Ball Bearing	1
107	W-295002-50	Handle	1	165	W-154165-00	Stop Ring	1	A02	BB-EE9	Ball Bearing	1
(129)	H-006129-00	Throttle Valve Rod Bushing	1	171	W-154171-02	Inlet Bushing (PT)	1	B06	SP-38	Spring Pin	1
(132)	W-266132-00	Reverse Valve Bushing	1	171	W-154171-01	Inlet Bushing (NPT)	1	C04	O-P15	"O" Ring	2
110	A-078110-01	Throttle Valve	1	696	W-154696-01	Joint Nut	1	C05	O-P16	"O" Ring	1
111	A-078111-01	Throttle Valve Washer	1	C02	O-16	"O" Ring	1	C06	O-S32	"O" Ring	1
113	W-154113-00	Throttle Valve Rod	1	C03	O-P20	"O" Ring	1	C07	O-S70	"O" Ring	1
117	W-154117-00	Throttle Valve Spring	1	<b>FW-250-1, -1C FW-250-2, -2C</b>				D01	CS-835	Cap Screw	4
121	W-014121-01	Throttle Valve Lever	1	CP No.	<b>W-290013-00</b>	<b>Clutch Housing CP</b>		D02	SS-512C	Set Screw	1
195	W-080195-00	Sub Throttle Valve	1	501	W-290501-00	Clutch Housing	1	D03	CS-412	Cap Screw	3
B01	NR-422	Needle Roller	1	544	W-290544-00	Clutch Housing Bushing	1	D04	CS-620	Cap Screw	2
B02	NR-425	Needle Roller	1	K01	OS-VB32455	Oil Seal	1	D05	CS-622	Cap Screw	2
B03	SP-312	Spring Pin	1	124	G-044124-00	Knock Spring	1	E01	SW-8	Spring Washer	4
C01	O-G25	"O" Ring	1	131	W-266131-00	Reverse Valve	1	E02	SW-4	Spring Washer	3
				133	W-266133-00	Reverse Valve Sheet	1	E03	SW-6	Spring Washer	2
				135	W-266135-00	Reverse Valve Lever	1	E04	SW-6	Spring Washer	2
				201	W-295201-00	Housing	1	J01	B-4	Ball	1
				207	W-290207-00	Rotor	1	J02	B-3/8	Ball	1
				208	W-290208-00	Rotor Blade	6	Z01	NP-3018	Name Plate	1
				209	W-290209-00	Cylinder	1	Z02	NPN-OX3.2	Screw Rivet	2
				(B04)	SP-410	Spring Pin	1	<b>FW-250-1, -1C</b>			
				(B05)	SP-410	Spring Pin	1	509	W-290509-00	Anvil	1
				210	W-290210-00	Cylinder Upper Plate	1	<b>FW-250-2, -2C</b>			
				211	W-290211-00	Cylinder Lower Plate	1	509	W-290509-01	Anvil	1
				214	W-290214-00	Adjusting Washer	1	<b>"BF" ANVIL</b>			
				231	W-266231-00	Silencer Plate	1	509A	W-290509-02	Anvil (B)	1
				237	W-266237-00	Muffler Pad	1	(541)	W-192541-00	Button Retainer Spring (F)	1
				240	W-290240-00	Coupling	1	551	W-192551-00	Plug	1
				250	W-266250-00	Exhaust Cover	1	(583)	W-192583-00	Retainer Button (F)	1
				289	W-291289-00	Muffler Plate	1	<b>OPTIONAL PART "D" TYPE DEAD HANDLE</b>			
				506	W-290506-00	Hammer Clutch	1	CP No.	<b>W-014014-00</b>	<b>"D" Type Dead Handle CP</b>	
				553	W-290553-00	Clutch Shaft	1	538M	W-014538-M	Exllagon Nut (B)	1
				604	W-094604-00	Dead Handle	1	604M	W-014604-M	Dead Handle	1
				621	W-295621-00	Packing (A)	1	605M	W-014605-M	Dead Handle Joint	1
				651	W-295651-00	Hanger	1	D06	SS-810C	Set Screw (Cone Point)	1
				771	W-290771-00	Spring	1				

CP No. denotes the assembled parts comprising of more than 1 pc. of parts.  
The related parts are shown in the thick frame.

#107, 209 and 509A are supplied together with parts shown in ( ).  
 Specify parts number and quantity in ordering.