



# USER MANUAL

## IMPACT WRENCH

MODELS : FW-19PX-5



FW-19PX-5

### SPECIFICATIONS

Model	Capacity Bolt size (Guidance)		Free Speed	Side to Center		Square Drive Size		Overall Length (without socket)		Mass (without socket)		Air Consumption (Under Load)		Air Inlet Thread Size	Air Hose Size	
	mm	in		mm	in	mm	in	mm	in	kg	lb	Nm <sup>3</sup> /min	Nft <sup>3</sup> /min		PT or NPT	mm
FW-19PX-5	18	3/4	5,000	36.5	1 7/16	19.0	3/4	239	9 27/32	4.4	9.6	0.60	21.2	1/4	9.5	3/8

The performance figures are at 0.63 MPa (6.3 bar).

⚠ Refer to "The Instructions and Warning for Safety Use" enclosed in each tool box.

**FUJI AIR TOOLS CO., LTD.**

2-1-14 Kamiji, Higashinariku, Osaka 537-0003, Japan

Tel : (06) 6972-2335

Fax : (06) 6972-2250

BOLT & NUT SETTERS  
SCREW DRIVERS

ABRASIVE TOOLS

DRILLS · TAPPERS

PERCUSSION TOOLS

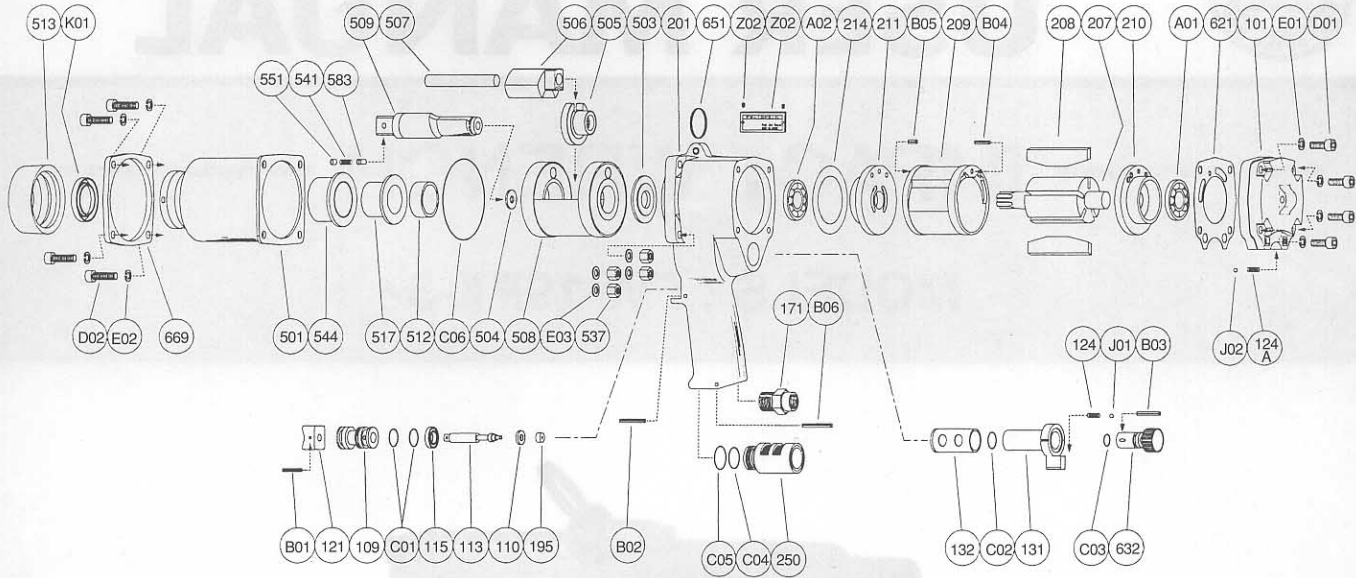
AIR MOTORS & OTHERS

OTHER PRODUCTS



# PARTS LIST MODEL: FW-19PX-5

## EXPLODED VIEW



FW-19PX-5

## PARTS LIST

Index No.	Parts No.	Parts Name	Qt.	Index No.	Parts No.	Parts Name	Qt.
CP No.	W-192006-03	Housing CP		211	W-086211-00	Cylinder Lower Plate	1
201	W-192006-53	Housing	1	214	W-192214-00	Adjusting Washer (T=0.05)	1
(132)	W-125132-00	Throttle Valve Bushing	1	250	W-192250-00	Exhaust Cover	1
109	W-125109-00	Throttle Valve Bushing	1	503	W-086503-00	Spacer (B)	1
115	W-125115-00	Throttle Valve Sheet	1	504	W-192504-00	Spacer (C)	1
121	W-125121-00	Throttle Valve Lever	1	505	W-192505-01	Cam	1
171	W-242171-00	Inlet Joint (PT)	1	506	W-192506-02	Hammer Clutch	1
171	W-272171-01	Inlet Joint (NPT)	1	507	W-086507-00	Clutch Pin	1
C01	O-S15	"O" Ring	2	508	W-086508-00	Clutch Frame	1
B01	SP-2.518	Spring Pin	1	509	W-192509-06	"B" Anvil	1
B02	SP-325	Spring Pin	1	(541)	W-192541-00	Button Retainer Spring (F)	1
CP No.	W-125008-00	Throttle Valve Rod CP		(551)	W-192551-00	Plug	1
110	W-125110-00	Throttle Valve	1	(583)	W-192583-00	Retainer Button (F)	1
113	W-125113-00	Throttle Valve Rod	1	512	W-086512-00	Clutch Frame Bushing (B)	1
195	W-017195-00	Sub Throttle Valve	1	513	W-086513-00	Clutch Housing Cap	1
CP No.	W-125009-00	Reverse Valve CP		517	W-086517-00	Anvil Bushing	1
124	G-044124-00	Knock Spring	1	537	W-086537-00	Hexagon Nut	4
131	W-125131-00	Reverse Valve	1	621	W-135621-00	Packing (A)	1
632	W-125632-00	Regulator	1	651	W-181651-00	Horizontal Hanger	1
B03	SP-322	Spring Pin	1	669	W-193669-00	Flange	1
C02	O-P14	"O" Ring	1	A01	BB-6202	Ball Bearing	1
C03	O-P9	"O" Ring	1	A02	BB-6202	Ball Bearing	1
J01	B-4	Ball	1	B06	SP-328	Spring Pin	1
CP No.	W-086013-00	Clutch Housing CP		C04	O-S18	"O" Ring	1
501	W-086501-00	Clutch Housing	1	C05	O-S20	"O" Ring	1
544	W-086544-00	Clutch Housing Bushing	1	C06	O-S70	"O" Ring	1
K01	OS-VB25385	Oil Seal	1	D01	CS-622	Cap Screw	4
101	W-192101-02	Housing Cover	1	D02	CS-628	Cap Screw	4
124A	G-044124-00	Knock Spring	1	E01	SW-6	Spring Washer	4
207	W-086207-00	Rotor	1	E02	SW-6	Spring Washer	4
208	W-086208-00	Rotor Blade	5	E03	PW-6	Plain Washer	4
209	W-086209-00	Cylinder	1	J02	B-4	Ball	1
(B04)	SP-314	Spring Pin	1	Z01	NP-2020	Name Plate	1
(B05)	SP-38	Spring Pin	1	Z02	NPN-0×3.2	Screw Rivet	2
210	W-086210-00	Cylinder Upper Plate	1				

□ CP No. denotes the assembled parts comprising of more than 1 pc. of parts.  
The related parts are shown in the thick frame.

□ #201, 209 and 509 are supplied together with parts shown in ( ).  
□ Specify parts number and quantity in ordering.