



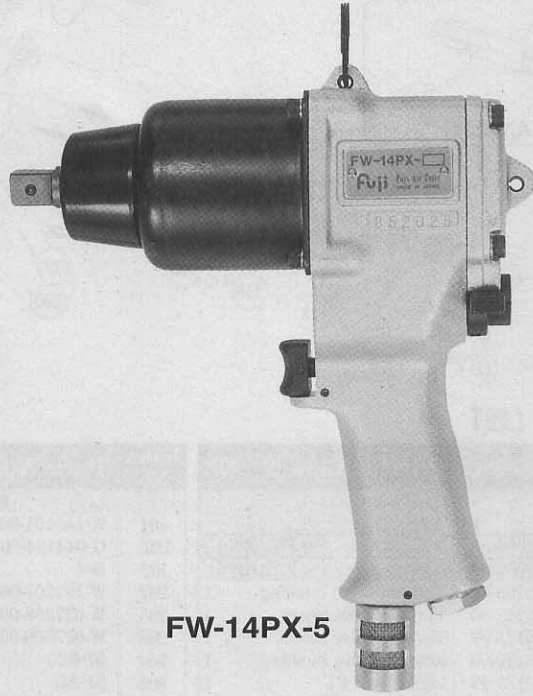
USER MANUAL

IMPACT WRENCHES

MODELS : FW-10PX-5 & FW-14PX-5



FW-10PX-5



FW-14PX-5

SPECIFICATIONS

Model	Capacity Bolt or Screw Size (Guidance)		Free Speed min ⁻¹	Side to Center		Square Drive Size		Overall Length		Mass		Air Consumption (Under Load)		Air Inlet Thread Size in	Air Hose Size	
	mm	in		mm	in	mm	in	mm	in	kg	lb	m ³ /min	ft ³ /min		mm	in
FW-10PX-5	10	3/8	8,000	29	19/64	12.7	1/2	182	7 11/64	2.3	5.0	0.4	15.0	PT or NPT 1/4	9.5	3/8
FW-14PX-5	14	9/16	6,500	34	15/16	12.7	1/2	197	7 19/64	3.0	6.6	0.5	17.6	PT or NPT 1/4	9.5	3/8

The performance figures are at 0.63 MPa (6.3 bar).



Refer to "The Instructions and Warning for Safety Use" enclosed in each tool box.

FUJI AIR TOOLS CO., LTD.

2-1-14 Kamiji, Higashinari-ku, Osaka 537-0003, Japan

Tel : (06) 6972-2335

Fax : (06) 6972-2250



BOLT & NUT SETTERS
SCREW DRIVERS

ABRASIVE TOOLS

DRILLS · TAPPERS

PERCUSSION TOOLS

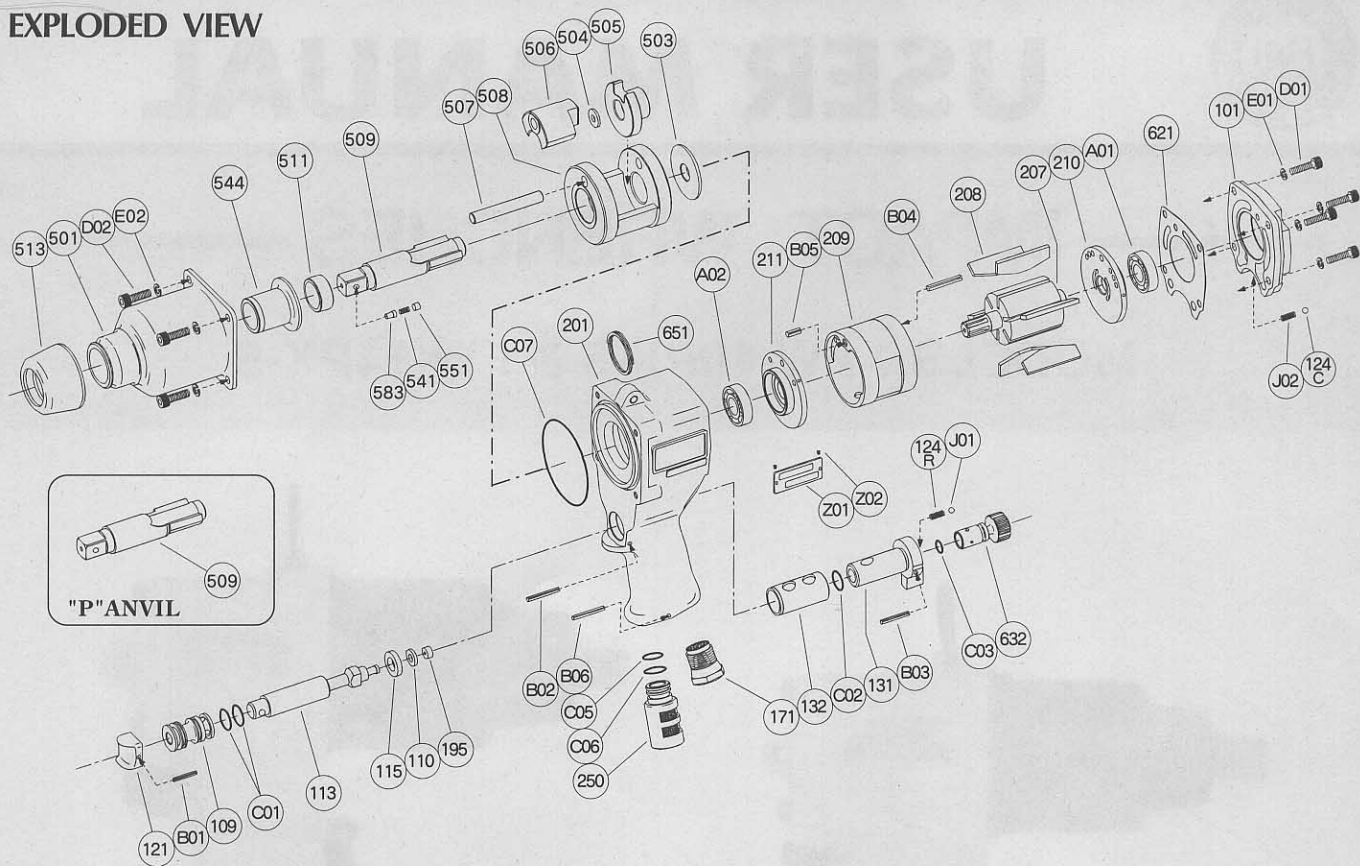
AIR MOTORS & OTHERS

OTHER PRODUCTS



PARTS LIST MODEL: FW-10PX-5 & FW-14PX-5

EXPLODED VIEW



PARTS LIST

Index No.	Parts No.	Parts Name	Qt.	Index No.	Parts No.	Parts Name	Qt.	Index No.	Parts No.	Parts Name	Qt.
FW-10PX-5				FW-10PX-5				FW-14PX-5			
Ass'y No.	W-140006-00	Housing Ass'y For FW-10PX-5		101	W-140101-00	Housing Cover	1	101	W-141101-00	Housing Cover	1
Ass'y No.	W-141006-00	Housing Ass'y For FW-14PX-5		124C	G-044124-00	Knock Spring	1	124C	G-044124-00	Knock Spring	1
109	W-125109-00	Throttle Valve Bushing	1	J02	B-4	Ball	1	J02	B-4	Ball	1
115	W-125115-00	Throttle Valve Sheet	1	207	W-133207-00	Rotor	1	207	W-125207-00	Rotor	1
121	W-125121-00	Throttle Valve Lever	1	208	W-027208-00	Rotor Blade	6	208	W-017208-00	Rotor Blade	6
132	W-125132-00	Reverse Valve Bushing	1	209	W-027209-00	Cylinder	1	209	W-017209-00	Cylinder	1
171	W-017171-02	Inlet Joint PT	1	B04	SP-320	Spring Pin	1	B04	SP-414	Spring Pin	1
171	W-017171-01	Inlet Joint NPT	1	B05	SP-38	Spring Pin	1	B05	SP-410	Spring Pin	1
201	W-140201-00	Housing For FW-10PX-5	1	210	W-133210-00	Cylinder Upper Plate	1	210	W-017210-00	Cylinder Upper Plate	1
201	W-141201-00	Housing For FW-14PX-5	1	211	W-027211-00	Cylinder Lower Plate	1	211	W-017211-00	Cylinder Lower Plate	1
B01	SP-2.518	Spring Pin	1	250	W-140250-00	Exhaust Cover	1	250	W-140250-00	Exhaust Cover	1
B02	SP-325	Spring Pin	1	503	W-027503-00	Spacer A	1	503	W-125503-00	Spacer A	1
C01	O-S15	"O" Ring	2	504	W-140504-00	Spacer C	1	504	W-141504-00	Spacer C	1
Ass'y No.	W-125009-00	Reverse Valve Ass'y		505	W-140505-02	Cam	1	505	W-141505-02	Cam	1
124R	G-044124-00	Knock Spring	1	506	W-140506-02	Hammer Clutch	1	506	W-141506-02	Hammer Clutch	1
131	W-125131-00	Reverse Valve	1	507	W-027507-00	Clutch Pin	1	507	W-017507-00	Clutch Pin	1
632	W-125632-00	Regulator	1	508	W-027508-01	Clutch Frame	1	508	W-017508-01	Clutch Frame	1
B03	SP-322	Spring Pin	1	509	W-140509-13	Anvil B	1	509	W-141509-09	Anvil B	1
C02	O-P14	"O" Ring	1	541	W-224541-00	Button Retainer Spring	B 1	541	W-224541-00	Button Retainer Spring	F 1
C03	O-P9	"O" Ring	1	551	W-224551-00	Plug	1	551	W-224551-00	Plug	1
J01	B-4	Ball	1	583	W-224583-00	Retainer Button F	1	583	W-224583-00	Retainer Button F	1
Ass'y No.	W-140008-00	Throttle Valve Rod Ass'y		511	W-027511-00	Clutch Frame Bushing	1	511	W-017511-00	Clutch Frame Bushing	1
110	W-125110-00	Throttle Valve	1	513	W-027513-00	Clutch Housing Cap	1	513	W-017513-00	Clutch Housing Cap	1
113	W-140113-00	Throttle Valve Rod	1	621	W-133621-00	Packing A	1	621	W-125621-00	Packing A	1
195	W-017195-00	Sub Throttle Valve	1	651	W-181651-00	Horizontal Hanger	1	651	W-181651-00	Horizontal Hanger	1
FW-10PX-5				FW-10PX-5				FW-14PX-5			
Ass'y No.	W-027013-00	Clutch Housing Ass'y		A01	BB-EE3	Ball Bearing	1	A01	BB-EE4	Ball Bearing	1
501	W-027501-00	Clutch Housing	1	A02	BB-EE4	Ball Bearing	1	A02	BB-EE4	Ball Bearing	1
544	W-027544-00	Clutch Housing Bushing	1	B06	SP-325	Spring Pin	1	B06	SP-325	Spring Pin	1
FW-14PX-5				FW-14PX-5				FW-14PX-5			
Ass'y No.	W-017013-00	Clutch Housing Ass'y		C05	O-S14	"O" Ring	1	C05	O-S14	"O" Ring	1
501	W-017501-00	Clutch Housing	1	C06	O-S15	"O" Ring	1	C06	O-S15	"O" Ring	1
544	W-017544-00	Clutch Housing Bushing	1	C07	O-S53	"O" Ring	1	C07	O-S63	"O" Ring	1
D01	CS-522	Cap Screw	4	D01	CS-520	Cap Screw	4	D01	CS-520	Cap Screw	4
D02	CS-516	Cap Screw	4	D02	CS-516	Cap Screw	4	D02	CS-516	Cap Screw	4
E01	SW-5	Spring Washer	4	E01	SW-5	Spring Washer	4	E01	SW-5	Spring Washer	4
E02	SW-5	Spring Washer	4	E02	SW-5	Spring Washer	4	E02	SW-5	Spring Washer	4
Z01	NP-2021	Name Plate	1	Z01	NP-2024	Name Plate	1	Z01	NP-2024	Name Plate	1
Z02	NPN-0X3.2	Screw Rivet	2	Z02	NPN-0X3.2	Screw Rivet	2	Z02	NPN-0X3.2	Screw Rivet	2
OPTION				OPTION				OPTION			
"P" ANVIL				"P" ANVIL				"P" ANVIL			
509	W-027509-A	Anvil P	1	509	W-017509-D	Anvil P	1	509	W-017509-D	Anvil P	1

□ Ass'y No. denotes the assembled parts comprising of more than 1 pc. of parts.
The related parts are shown in the thick frame.

□ # 101, 209 and 509 are supplied together with parts shown in ().
□ Specify parts number and quantity in ordering.