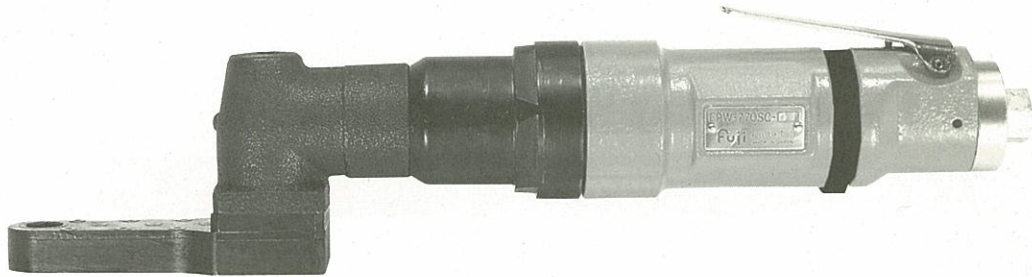




USER MANUAL

CORNER GEARED PULSE WRENCH

MODELS : FPW-770SCG-1



FPW-770SCG-1

SPECIFICATIONS

Model	Capacity Screw Size(Guidance)		Adjustable Torque Range			Rotational Frequency	Distance from Center to Side		Socket Hexagon Size(Standard)		Overall Length		Mass		Air Consumption (At Load)	
	mm	in	N · m	kgf · m	ft · lb	min ⁻¹	mm	in	mm	in	mm	in	kg	lb	m ³ /min	ft ³ /min
FPW-770SCG-1	4~6	5/32~1/4	21~30	2.1~3.0	15.5~22.1	7300	27	1 5/64	12	15/32	343	13 33/64	2.0	4.4	0.45	15.8

※ The performance figures are at 0.63MPa(6.3bar).

※ Air Inlet Thread Size : PT or NPT 1/4"

※ Air Hose Size : 9.5mm (3/8")

Refer to "The Instructions and Warning for Safety Use" enclosed in each tool box.

FUJI AIR TOOLS CO., LTD.

2-1-14 Kamiji, Higashinari-ku, Osaka 537-0003, Japan

Tel : (06)6972-2335

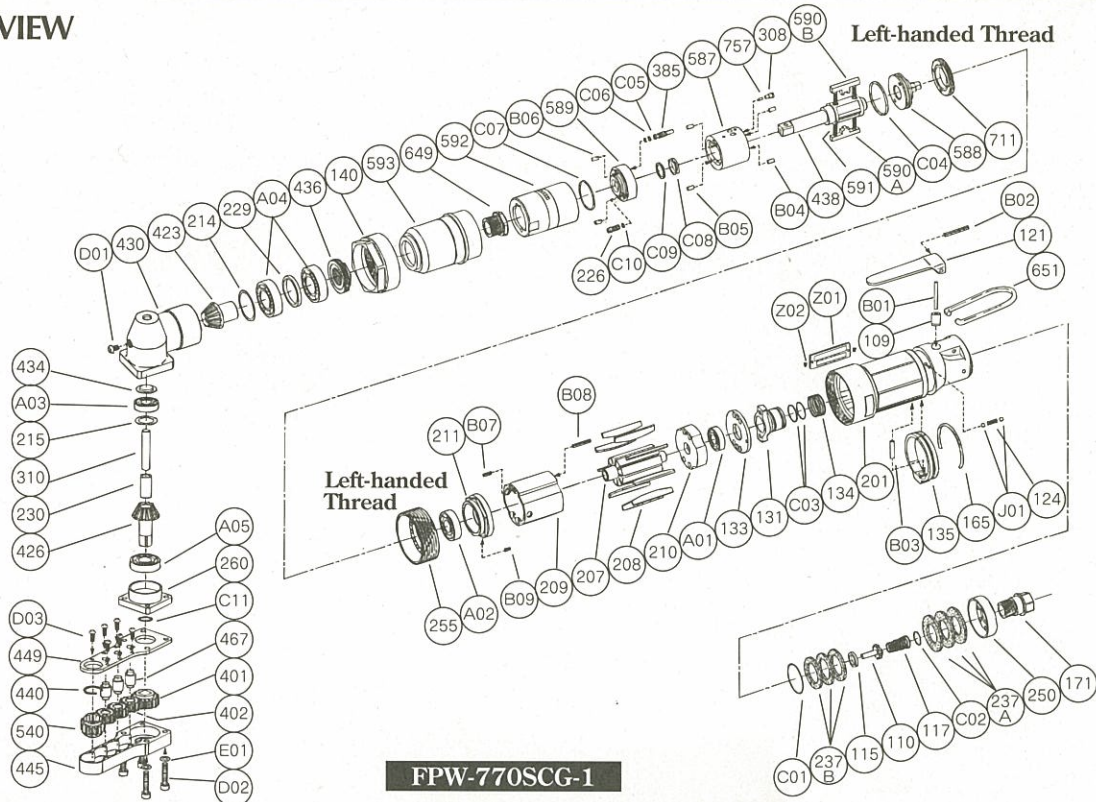
Fax : (06)6972-2250



This manual is made by using recycled paper.

PARTS LIST MODEL: FPW-770SCG-1

EXPLODED VIEW



PARTS LIST

FPW-770SCG-1

Index No.	Parts No.	Parts Name	Qt.	Index No.	Parts No.	Parts Name	Qt.	Index No.	Parts No.	Parts Name	Qt.
Ass'y No.	W-322006-00	Housing Ass'y		590A	W-279590-00	Spindle Blade	1	229	W-323229-00	Bearing Spacer	1
109	W-299109-00	Throttle Valve Bushing	1	590B	W-279590-01	Spindle Blade	1	230	W-323230-00	Bearing Spacer 	1
110	W-299110-00	Throttle Valve	1	591	W-279591-00	Blade Spring	2	255	W-322255-00	Motor Fastening Nut	1
115	W-299115-00	Throttle Valve Sheet	1	592	W-279592-00	Cylinder Case	1	260	W-325260-00	Bearing Case	1
117	D-001117-00	Throttle Valve Spring	1	711	W-279711-00	Cylinder Cover	1	310	W-323310-00	Spindle Arbor	1
121	M-073121-00	Throttle Valve Lever	1	757	W-279757-00	Needle	1	401	W-319401-00	No.1 Pinion	1
124	G-005124-00	Knock Spring	1	B04	NR-3.056	Needle Roller	2	402	W-319402-00	No.1 Gear	3
131	W-322131-00	Reverse Valve	1	B05	NR-3.056	Needle Roller	2	423	W-323423-00	Bevel Pinion	1
134	W-322134-00	Reverse Valve Spring	1	B06	GP-36G	Grooved Pin	2	426	W-323426-00	Bevel Gear	1
135	W-322135-00	Reverse Valve Lever	1	C04	O-S30(H)	"O" Ring	1	430	W-325430-00	No.1 Gear Case	1
165	W-322165-00	Stop Ring	1	C05	O-S2F(H)	"O" Ring	1	434	A-021434-00	Bearing Washer	1
171	W-299171-00	Inlet Joint <PT>	1	C06	BR-S2.5FT2	Back Up Ring	1	436	W-323436-00	Bearing Holder	1
171	W-299171-01	Inlet Joint <NPT>	1	C07	O-1530-24(H)	"O" Ring	1	445	W-319445-00	Spindle Case	1
201	W-322201-00	Housing	1	C08	O-KX12(H)	"X" Ring	1	449	W-319449-00	Spindle Case Cover	1
237A	W-299237-00	Muffler Pad	3	C09	BR-112	Buck Up Ring	1	467	W-319467-00	No.1 Gear Spindle	3
237B	W-322237-00	Muffler Pad	3	C10	O-S2.5F(H)	"O" Ring	1	540	W-319540-00	Socket	1
250	W-299250-00	Exhaust Cover	1	133	W-322133-00	Reverse Valve Sheet	1	(440)	W-272440-10	Ring	1
B01	NR-326FR	Needle Roller	1	140	W-322140-00	Cup Nut	1	593	W-323593-00	Front Case	1
B02	SP-325	Spring Pin	1	207	W-279207-00	Rotor	1	649	W-323649-00	Joint	1
B03	NR-416	Needle Roller	1	208	W-279208-00	Rotor Blade	9	651	W-100651-00	Hanger	1
C01	O-S28F	"O" Ring	1	209	W-322209-00	Cylinder	1	A01	BB-6900	Ball Bearing	1
C02	O-S12.5	"O" Ring	1	(B07)	SP-2.58	Spring Pin	1	A02	BB-6001	Ball Bearing	1
C03	O-S16	"O" Ring	1	(B08)	SP-2.518	Spring Pin	1	A03	BB-607	Ball Bearing	1
J01	B-3	Ball	2	210	W-322210-00	Cylinder Upper Plate	1	A04	BB-6903	Ball Bearing	2
Ass'y No.	W-279021-06	Oil Cylinder Ass'y <PL>		211	W-322211-00	Cylinder Lower Plate	1	A05	BB-6001	Ball Bearing	1
226	W-279226-00	Oil Plug	1	(B09)	SP-2.55	Spring Pin	1	C11	O-S12	"O" Ring	1
308	W-279308-00	Spacer	1	214	W-323214-00	Adjusting Washer <T=0.1>	1	D01	CS-46B	Cap Screw	1
385	W-279385-00	Adjusting Screw	1	214	W-323214-01	Adjusting Washer <T=0.2>	1	D02	CS-422	Cap Screw	4
438	W-279438-06	Spindle	1	214	W-323214-02	Adjusting Washer <T=0.3>	1	D03	CS-38S	Cap Screw	6
587	W-279587-00	Oil Cylinder	1	215	W-323215-00	Adjusting Washer <T=0.1>	1	E01	SW-4	Spring Washer	4
588	W-279588-00	Oil Cylinder Upper Plate	1	215	W-323215-01	Adjusting Washer <T=0.2>	1	Z01	NP-1111	Name Plate	1
589	W-279589-00	Oil Cylinder Lower Plate	1	215	W-323215-02	Adjusting Washer <T=0.5>	1	Z02	NPN-0×3.2	Screw Rivet	2

- Ass'y No. denotes the assembled parts comprising of more than 1 pc. of parts. Standard Accessories : F-701-11.5mm Hex. Pin Wrench 1.
- The related parts are shown in the thick frame.
- #209, 211 and 540 are supplied together with parts shown in ().
- Specify parts number and quantity in ordering.