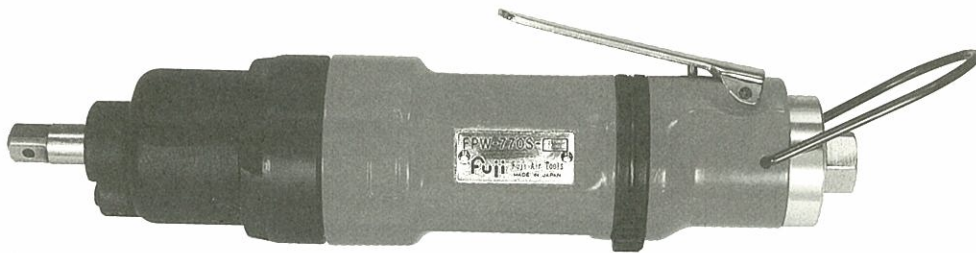




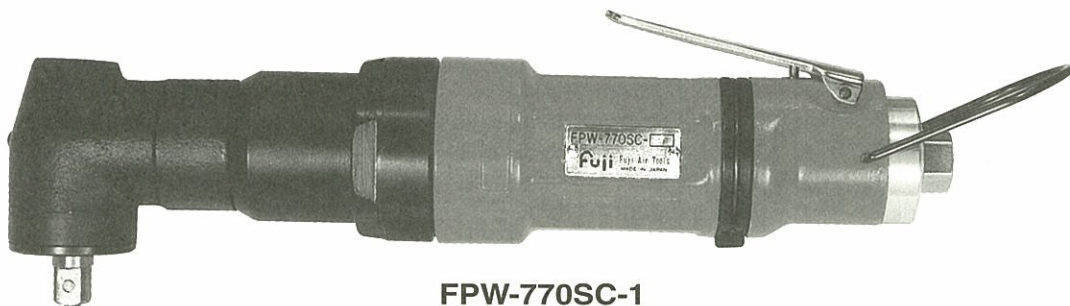
# USER MANUAL

## PNEUPULSE & CORNER PNEUPULSE

MODELS : FPW-770S-1 & FPW-770SC-1



FPW-770S-1



FPW-770SC-1

### SPECIFICATIONS

Model	Capacity Screw Size (Guidance)		Adjustable Torque Range			Max. Free Speed	Side to Center		Square Drive Size		Overall Length		Mass		Air Consumption Under Load		Air Inlet Thread Size	Air Hose Size	
	mm	in	N·m	kgf·m	ft·lb	min <sup>-1</sup>	mm	in	mm	in	mm	in	kg	lb	Nm <sup>3</sup> /min	Nft <sup>3</sup> /min	PT or NPT	mm	in
FPW-770S-1	8	5/16	44~76	4.5~7.6	32~55	6,300	22	7/8	9.5	3/8	240	9 29/64	1.25	2.8	0.45	15.9	1/4"	9.5	3/8
FPW-770SC-1	8	5/16	33~50	3.4~5.1	24~37	6,300	18	64/65	9.5	3/8	271	10 43/64	1.70	3.7	0.45	15.9	1/4"	9.5	3/8

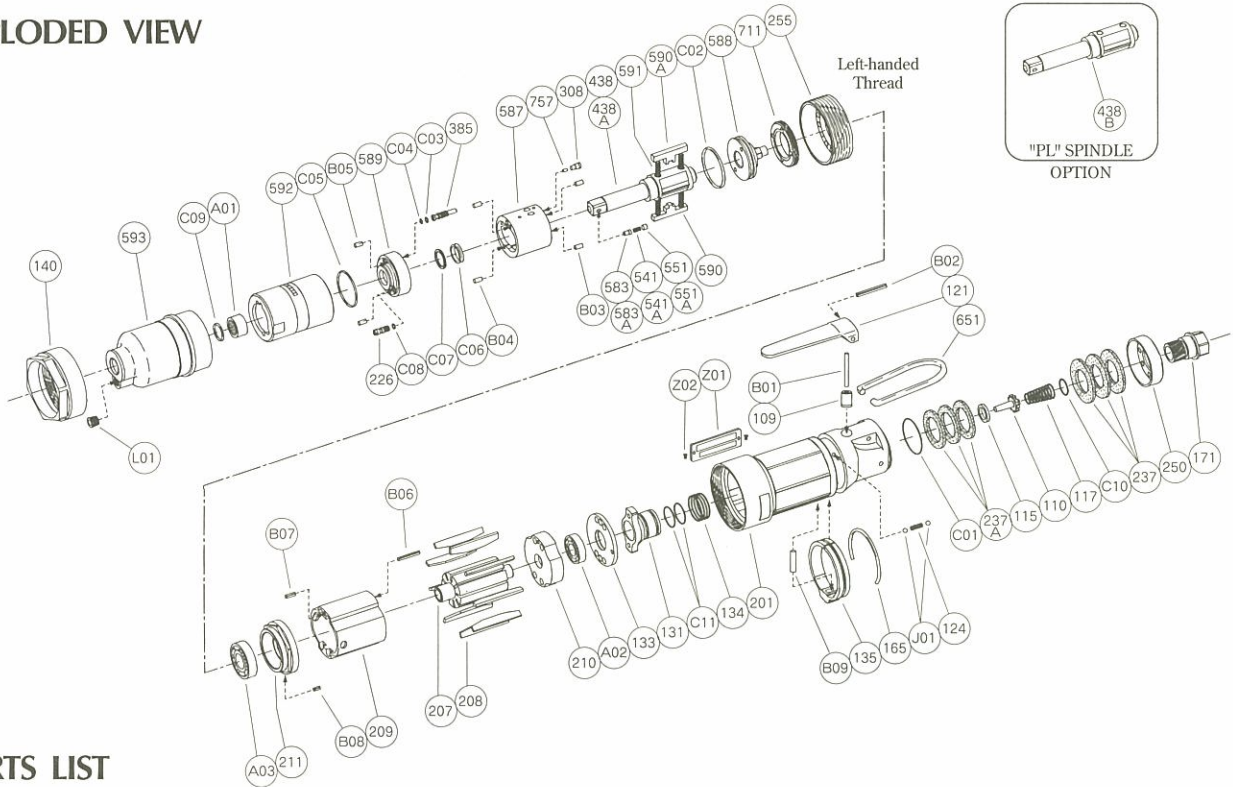
The performance figures are at 0.63 MPa (6.3 bar).

Refer to "The Instructions and Warning for Safety Use" enclosed in each tool box.



# PARTS LIST MODEL: FPW-770S-1

## EXPLODED VIEW



## PARTS LIST

Index No.	Parts No.	Parts Name	Qt.	Index No.	Parts No.	Parts Name	Qt.	Index No.	Parts No.	Parts Name	Qt.
<b>FPW-770S-1</b>				587	W-279587-00	Oil Cylinder	1	140	W-322140-00	Cup Nut	1
<b>CP No.</b>	<b>W-322006-00</b>	<b>Housing CP</b>		588	W-279588-00	Oil Cylinder Upper Plate	1	165	W-322165-00	Stop Ring	1
109	W-299109-00	Throttle Valve Bushing	1	589	W-279589-00	Oil Cylinder Lower Plate	1	207	W-279207-00	Rotor	1
110	W-299110-00	Throttle Valve	1	590	W-279590-00	Spindle Blade	1	208	W-279208-00	Rotor Blade	9
115	W-299115-00	Throttle Valve Sheet	1	590A	W-279590-01	Spindle Blade	1	209	W-322209-00	Cylinder	1
117	D-001117-00	Throttle Valve Spring	1	591	W-279591-00	Blade Spring	2	(B06)	SP-2.518	Spring Pin	1
121	M-073121-00	Throttle Valve Lever	1	592	W-279592-00	Cylinder Case	1	(B07)	SP-2.58	Spring Pin	1
171	W-299171-00	Inlet Joint <PT>	1	711	W-279711-00	Cylinder Cover	1	210	W-322210-00	Cylinder Upper Plate	1
171	W-299171-01	Inlet Joint <NPT>	1	757	W-279757-00	Needle	1	211	W-322211-00	Cylinder Lower Plate	1
201	W-322201-00	Housing	1	B03	NR-3.056	Needle Roller	2	(B08)	SP-2.55	Spring Pin	1
237	W-299237-00	Muffler Pad	3	B04	NR-3.056	Needle Roller	2	255	W-322255-00	Motor Fastening Nut	1
237A	W-322237-00	Muffler Pad	3	B05	GP-36G	Grooved Pin	2	651	W-100651-00	Hanger	1
250	W-299250-00	Exhaust Cover	1	C02	O-S30(H)	"O" Ring	1	A02	BB-6900	Ball Bearing	1
B01	NR-326FR	Needle Roller	1	C03	O-S2F(H)	"O" Ring	1	A03	BB-6001	Ball Bearing	1
B02	SP-325	Spring Pin	1	C04	BR-S2.5FT2	Back Up Ring	1	B09	NR-416	Needle Roller	1
C01	O-S28F	"O" Ring	1	C05	O-1530-24(H)	"O" Ring	1	C10	O-S12.5	"O" Ring	1
<b>CP No.</b>	<b>W-279021-01</b>	<b>Oil Cylinder CP &lt;BF&gt;</b>		C06	O-KX12(H)	"X" Ring	1	C11	O-S16	"O" Ring	2
<b>CP No.</b>	<b>W-279021-07</b>	<b>Oil Cylinder CP &lt;BL&gt;</b>		C07	BR-112	Back Up Ring	1	J01	B-3	Ball	2
226	W-279226-00	Oil Plug	1	C08	O-S2.5F(H)	"O" Ring	1	Z01	NP-1109	Name Plate	1
308	W-279308-00	Spacer	1	<b>CP No.</b>	<b>W-322033-00</b>	<b>Front Case CP</b>		Z02	NPN-0×3.2	Screw Rivet	2
385	W-279385-00	Adjusting Screw	1	593	W-322593-00	Front Case	1	<b>OPTION</b>			
438	W-279438-01	Spindle <B>	1	A01	NB-NK12/12	Needle Bearing	1	<b>"PL" SPINDLE</b>			
(541)	W-252541-00	Button Retainer Spring <F>	1	C09	O-P12	"O" Ring	1	<b>CP No.</b>	<b>W-279021-06</b>	<b>Oil Cylinder CP &lt;PL&gt;</b>	
(551)	W-252551-00	Plug	<BF> 1	L01	PL-1/16	Plug	1	438B	W-279438-06	Spindle <PL>	1
(583)	W-252583-00	Retainer Button <F>	1	124	G-005124-00	Knock Spring	1				
438A	W-279438-07	Spindle <BL>	1	131	W-322131-00	Reverse Valve	1				
(541A)	W-252541-00	Button Retainer Spring <F>	<BL> 1	133	W-322133-00	Reverse Valve Sheet	1				
(551A)	W-252551-00	Plug	1	134	W-322134-00	Reverse Valve Spring	1				
(583A)	W-252583-00	Retainer Button <F>	1	135	W-322135-00	Reverse Valve Lever	1				

□ CP No. denotes the assembled parts comprising of more than 1 pc. of parts.

□ Specify parts number and quantity in ordering.

The related parts are shown in the thick frame.

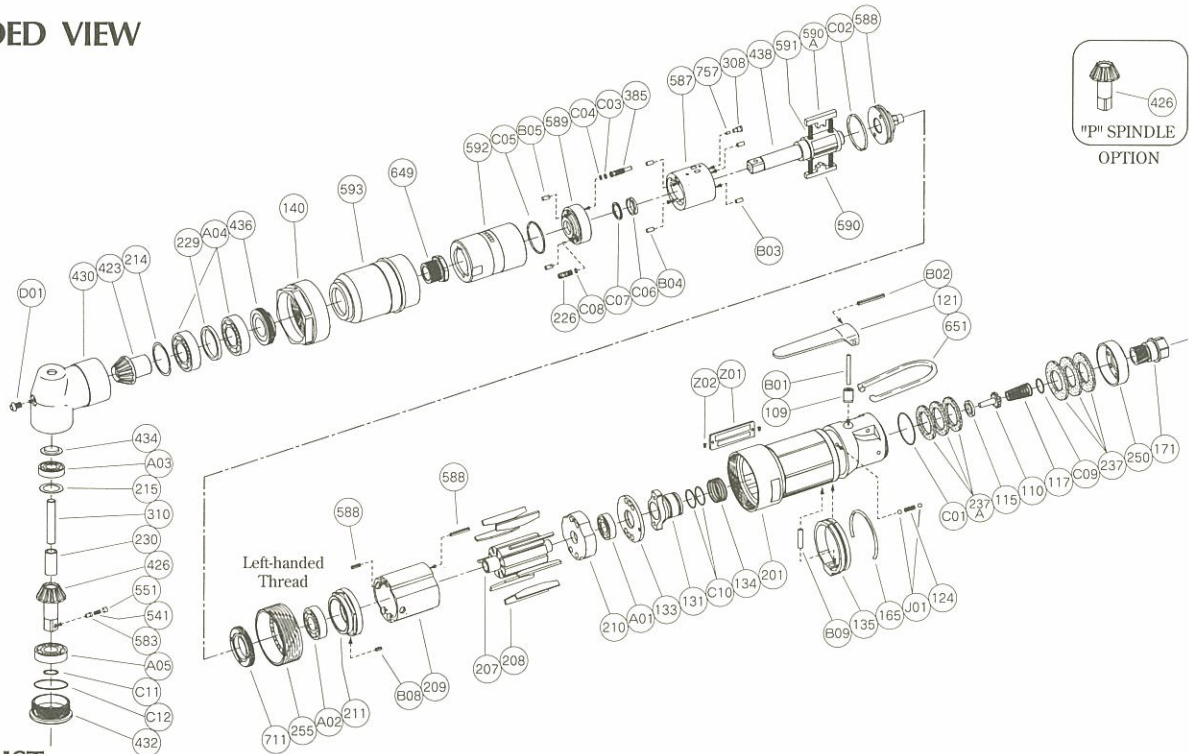
■ Standard Accessory : F-701-1 .....1.5mm Hex.Pin Wrench 1.

□ #209, 211, 438 and 438A are supplied together with parts shown in ( ).

F-704 .....4mm Hex.Pin Wrench 1.

# PARTS LIST MODEL: FPW-770SC-1

## EXPLODED VIEW



## PARTS LIST

Index No.	Parts No.	Parts Name	Qt.	Index No.	Parts No.	Parts Name	Qt.	Index No.	Parts No.	Parts Name	Qt.
<b>FPW-770SC-1</b>											
CP No.	<b>W-322006-00</b>	Housing CP		B05	GP-36G	Grooved Pin	2	310	W-323310-00	Spindle Arbor	1
109	W-299109-00	Throttle Valve Bushing	1	C02	O-S30(H)	"O" Ring	1	423	W-323423-00	Bevel Pinion	1
110	W-299110-00	Throttle Valve	1	C03	O-S2F(H)	"O" Ring	1	426	W-323426-01	Bevel Gear <B>	1
115	W-299115-00	Throttle Valve Sheet	1	C04	BR-S2.5FT2	Back Up Ring	1	(541)	W-252541-00	Button Retainer Spring <F>	1
117	D-001117-00	Throttle Valve Spring	1	C05	O-1530-24(H)	"O" Ring	1	551	W-252551-00	Plug	1
121	M-073121-00	Throttle Valve Lever	1	C06	O-KX12(H)	"X" Ring	1	(583)	W-252583-00	Retainer Button <F>	1
171	W-299171-00	Inlet Joint <PT>	1	C07	BR-112	Back Up Ring	1	430	W-323430-00	No.1 Gear Case	1
171	W-299171-01	Inlet Joint <NPT>	1	C08	O-S2.5F(H)	"O" Ring	1	432	W-323432-00	Gear Case Cover	1
201	W-322201-00	Housing	1	124	G-005124-00	Knock Spring	1	434	A-021434-00	Bearing Washer	1
237	W-299237-00	Muffler Pad	3	131	W-322131-00	Reverse Valve	1	436	W-323436-00	Bearing Holder	1
237A	W-322237-00	Muffler Pad	3	133	W-322133-00	Reverse Valve Sheet	1	593	W-323593-00	Front Case	1
250	W-299250-00	Exhaust Cover	1	134	W-322134-00	Reverse Valve Spring	1	649	W-323649-00	Joint	1
B01	NR-326FR	Needle Roller	1	135	W-322135-00	Reverse Valve Lever	1	651	W-100651-00	Hanger	1
B02	SP-325	Spring Pin	1	140	W-322140-00	Cup Nut	1	A01	BB-6900	Ball Bearing	1
C01	O-S28F	"O" Ring	1	165	W-322165-00	Stop Ring	1	A02	BB-6001	Ball Bearing	1
CP No.	<b>W-279021-06</b>	Oil Cylinder CP <PL>		207	W-279207-00	Rotor	1	A03	BB-607	Ball Bearing	1
226	W-279226-00	Oil Plug	1	208	W-279208-00	Rotor Blade	9	A04	BB-6903	Ball Bearing	2
308	W-279308-00	Spacer	1	209	W-322209-00	Cylinder	1	A05	BB-6001	Ball Bearing	1
385	W-279385-00	Adjusting Screw	1	(B06)	SP-2.518	Spring Pin	1	B09	NR-416	Needle Roller	1
438	W-279438-06	Spindle <PL>	1	(B07)	SP-2.58	Spring Pin	1	C09	O-S12.5	"O" Ring	1
587	W-279587-00	Oil Cylinder	1	210	W-322210-00	Cylinder Upper Plate	1	C10	O-S16	"O" Ring	2
588	W-279588-00	Oil Cylinder Upper Plate	1	211	W-322211-00	Cylinder Lower Plate	1	C11	O-S12	"O" Ring	1
589	W-279589-00	Oil Cylinder Lower Plate	1	(B08)	SP-2.55	Spring Pin	1	C12	O-S28F	"O" Ring	1
590	W-279590-00	Spindle Blade	1	214	W-323214-00	Adjusting Washer <T=0.1>	1	D01	CS-46B	Cap Screw	1
590A	W-279590-01	Spindle Blade	1	214	W-323214-01	Adjusting Washer <T=0.2>	1	J01	B-3	Ball	2
591	W-279591-00	Blade Spring	2	214	W-323214-02	Adjusting Washer <T=0.3>	1	Z01	NP-1110	Name Plate	1
592	W-279592-00	Cylinder Case	1	215	W-323215-00	Adjusting Washer <B> <T=0.1>	1	Z02	NPN-0×3.2	Screw Rivet	2
711	W-279711-00	Cylinder Cover	1	215	W-323215-01	Adjusting Washer <B> <T=0.2>	1	<b>OPTION</b>			
757	W-279757-00	Needle	1	215	W-323215-02	Adjusting Washer <B> <T=0.5>	1	<b>"P" SPINDLE</b>			
B03	NR-3.056	Needle Roller	2	229	W-323229-00	Bearing Spacer	1	426A	W-323426-00	Bevel Gear <P>	1
B04	NR-3.056	Needle Roller	2	230	W-323230-00	Bearing Spacer <B>	1				
				255	W-322255-00	Motor Fastening Nut	1				

CP No. denotes the assembled parts comprising of more than 1 pc. of parts.     Specify parts number and quantity in ordering.

The related parts are shown in the thick frame.

#209, 211, and 426 are supplied together with parts shown in ( ).

Standard Accessory : F-701-1 .....1.5mm Hex.Pin Wrench    1.

# FUJI AIR TOOLS CO., LTD.

2-1-14 Kamiji, Higashinari-ku, Osaka, 537-0003 Japan

Tel : (06) 6972-2335

Fax : (06) 6972-2250