



USER MANUAL

GEARED PULSE WRENCH

MODELS : FPW-770G-1



FPW-770G-1

SPECIFICATIONS

Model	Capacity Screw Size(Guidance)		Adjustable Torque Range			Rotational Frequency	Distance Center to Side		Socket Hexagon Size(Standard)		Overall Length		Mass		Air Consumption (At Load)	
	mm	in	N · m	kgf · m	ft · lb	min ⁻¹	mm	in	mm	in	mm	in	kg	lb	m ³ /min	ft ³ /min
FPW-770G-1	6~8	1/4~5/16	21~38	2.1~3.9	15.5~28.0	8100	26	1 1/32	12	15/32	177	6 31/32	1.7	3.7	0.35	12.4

※The performance figures are at 0.63MPa(6.3bar).

※Air Inlet Thread Size : PT or NPT 1/4"

※Air Hose Size : 9.5mm (3/8")



Refer to "The Instructions and Warning for Safety Use" enclosed in each tool box.

FUJI AIR TOOLS CO., LTD.

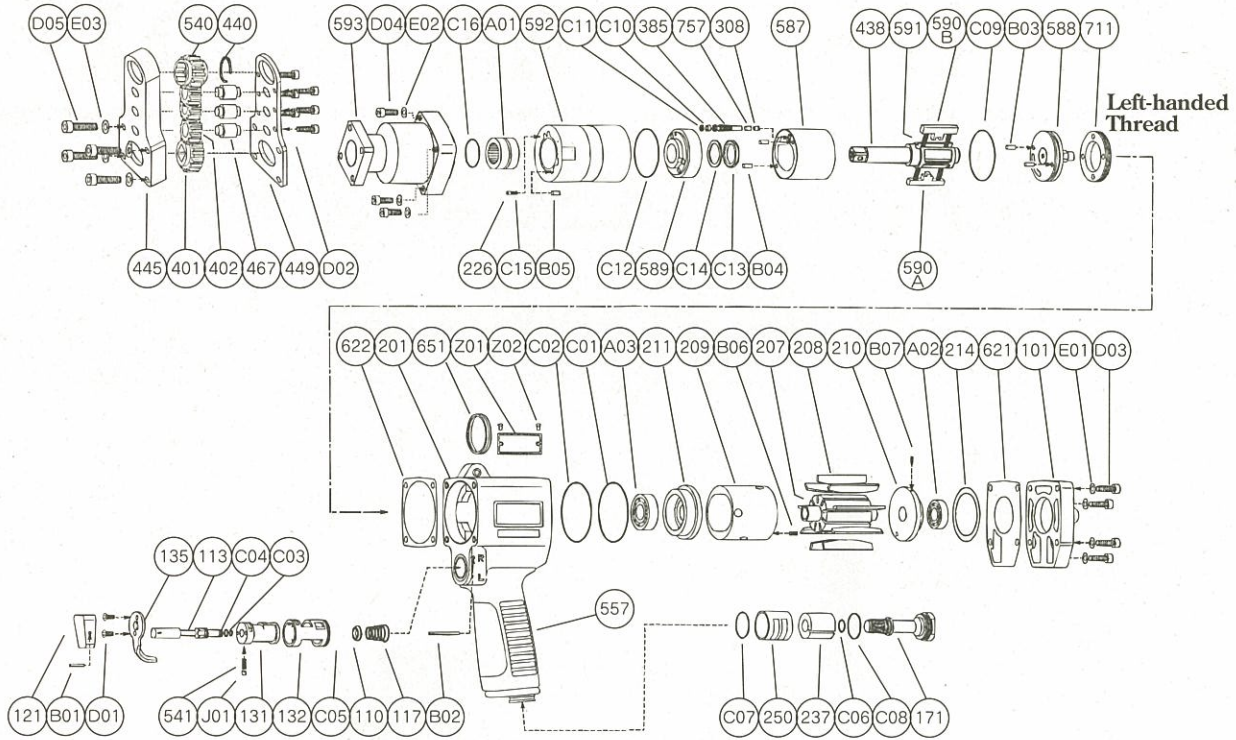
2-1-14 Kamiji, Higashinari-ku, Osaka 537-0003, Japan

Tel : (06)6972-2335

Fax : (06)6972-2250

PARTS LIST MODEL: FPW-770G-1

EXPLODED VIEW



FPW-770G-1

PARTS LIST

Index No.	Parts No.	Parts Name	Qt.	Index No.	Parts No.	Parts Name	Qt.	Index No.	Parts No.	Parts Name	Qt.
Ass'y No.	W-279006-01	Housing Ass'y		385	W-279385-00	Adjusting Screw	1	(B06)	SP-2.56	Spring Pin	1
110	W-283110-00	Throttle Valve	1	438	W-279438-06	Spindle	1	210	W-279210-00	Cylinder Upper Plate	1
113	W-282113-01	Throttle Valve Rod	1	587	W-279587-00	Oil Cylinder	1	(B07)	SP-1.56	Spring Pin	1
117	W-282117-01	Throttle Valve Spring	1	588	W-279588-00	Oil Cylinder Upper Plate	1	211	W-279211-00	Cylinder Lower Plate	1
121	W-254121-00	Throttle Valve Lever	1	589	W-279589-00	Oil Cylinder Lower Plate	1	214	W-162214-00	Adjusting Washer	1
131	W-282131-01	Reverse Valve	1	590A	W-279590-00	Spindle Blade	1	401	W-319401-00	No.1 Pinion	1
132	W-282132-01	Reverse Valve Bushing	1	590B	W-279590-01	Spindle Blade	1	402	W-319402-00	No.1 Gear	3
135	W-281135-00	Reverse Valve Lever	1	591	W-279591-00	Blade Spring	2	445	W-319445-00	Spindle Case	1
171	W-282171-00	Inlet Joint <PT>	1	592	W-279592-00	Cylinder Case	1	449	W-319449-00	Spindle Case Cover	1
171	W-282171-01	Inlet Joint <NPT>	1	711	W-279711-00	Cylinder Cover	1	467	W-319467-00	No.1 Gear Spindle	3
201	W-279201-01	Housing	1	757	W-279757-00	Needle	1	540	W-319540-00	Socket	1
237	W-282237-00	Muffler Pad	1	B03	NR-3.056	Needle Roller	2	(440)	W-272440-10	Ring	1
250	W-282250-01	Exhaust Cover	1	B04	NR-3.056	Needle Roller	2	557	W-282557-01	Protector	1
541	W-252541-00	Button Retainer Spring <F>	1	B05	GP-36G	Grooved Pin	2	621	W-279621-00	Packing < >	1
B01	SP-212	Spring Pin	1	C09	O-S30(H)	"O" Ring	1	622	W-279622-00	Packing < >	1
B02	GP-226GLC	Grooved Pin	1	C10	O-S2F(H)	"O" Ring	1	651	W-181651-00	Horizontal Hanger	1
C01	O-S42	"O" Ring	1	C11	BR-S2.5FT2	Back Up Ring	1	A02	BB-6900	Ball Bearing	1
C02	O-S42	"O" Ring	1	C12	O-1530-24(H)	"O" Ring	1	A03	BB-6001	Ball Bearing	1
C03	O-S4	"O" Ring	1	C13	O-KX12(H)	"X" Ring	1	D02	CS-38S	Cap Screw	6
C04	O-P5	"O" Ring	1	C14	BR-112	Back Up Ring	1	D03	CS-414	Cap Screw	4
C05	O-S17	"O" Ring	1	C15	O-S2.5F(H)	"O" Ring	1	D04	CS-425	Cap Screw	4
C06	O-S10	"O" Ring	1	Ass'y No.	W-319033-00	Front Case Ass'y		D05	CS-418	Cap Screw	4
C07	O-S20	"O" Ring	1	593	W-319593-00	Front Case	1	E01	PW-4K	Plain Washer	4
C08	O-S20	"O" Ring	1	A01	NB-NK12/12	Needle Bearing	1	E02	PW-4K	Plain Washer	4
D01	CS-36S	Cap Screw	2	C16	O-P12	"O" Ring	1	E03	SW-4	Spring Washer	4
J01	B-3	Ball	1	101	W-279101-00	Housing Cover	1	Z01	NP-1103	Name Plate	1
Ass'y No.	W-279021-06	Oil Cylinder Ass'y		207	W-279207-00	Rotor	1	Z02	NPN-0×3.2	Screw Rivet	2
226	W-279226-00	Oil Plug	1	208	W-279208-00	Rotor Blade	9				
308	W-279308-00	Spacer	1	209	W-279209-00	Cylinder	1				

□ Ass'y No. denotes the assembled parts comprising of more than 1 pc. of parts.
 The related parts are shown in the thick frame.
 □ #209, 210 and 540 are supplied together with parts shown in ().
 □ Specify parts number and quantity in ordering.

■ Standard Accessories : F-701-11.5mm Hex. Pin Wrench 1.
 F-7033mm Hex. Pin Wrench 1.