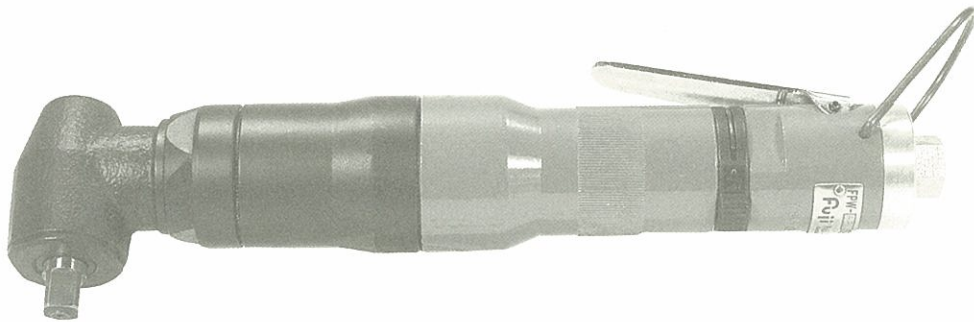




USER MANUAL

— CORNER PULSE WRENCH —

MODELS : FPW-660SC-1



FPW-660SC-1

SPECIFICATIONS

Model	Capacity Screw Size (Guidance)		Adjustable Torque Range			Free Speed	Side to Center		Square Drive Size		Overall Length		Mass		Air Consumption (Under Load)		Air Inlet Thread Size	Air Hose Size	
	mm	in	N·m	kgf·m	ft·lb	min ⁻¹	mm	in	mm	in	mm	in	kg	lb	Nm ³ /min	Nft ³ /min	in	mm	in
FPW-660SC-1	6~8	1/4~5/16	25~43	2.5~4.4	18.7~33.0	5500	23.0	29/32	9.5	3/8	267	10 1/2	1.40	3.1	0.48	17.0	PT or NPT1/4	9.5	3/8

*The performance figures are at 0.63MPa (6.3bar).



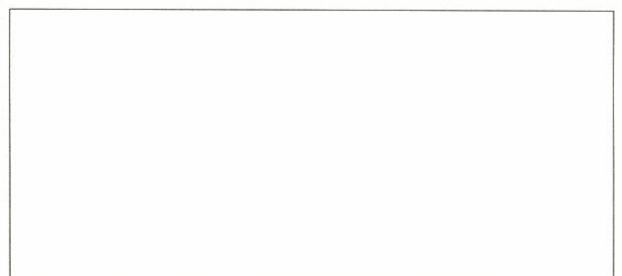
Refer to instructions and warning for safety use enclosed in each tool box.

FUJI AIR TOOLS CO., LTD.

1-14, Kamiji 2-chome, Higashinari-ku, Osaka 537-0003, Japan

Tel : (06) 6972-2335

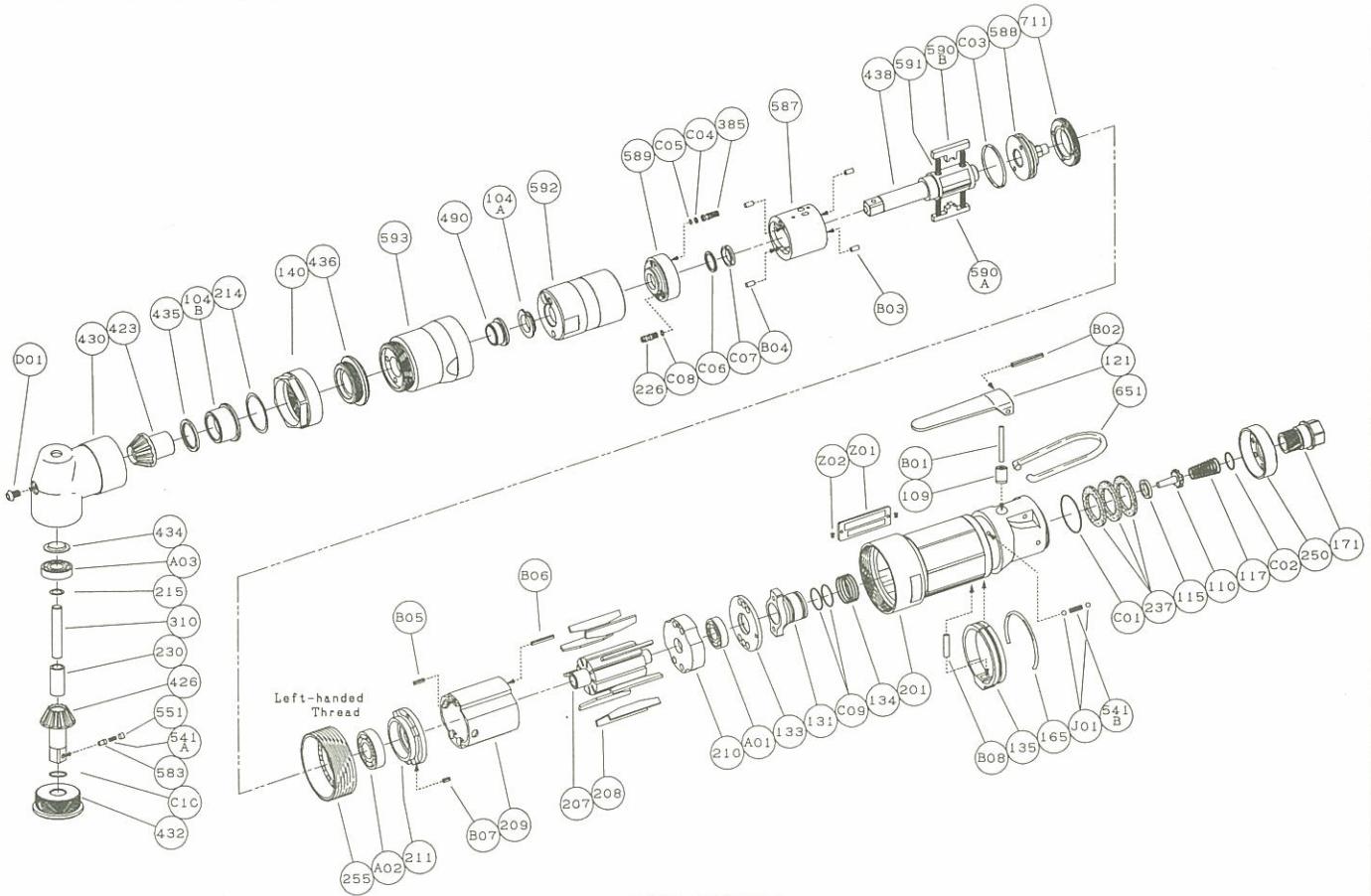
Fax : (06) 6972-2250



PARTS LIST MODEL :

FPW-660SC-1

EXPLODED VIEW



FPW-660SC-1

PARTS LIST

Index No.	Parts No.	Parts Name	Qt.	Index No.	Parts No.	Parts Name	Qt.
CP No.	W-299006-00	Housing C.P		165	W-216165-00	Stop Ring	1
109	W-299109-00	Throttle Valve Bushing	1	207	W-276207-00	Rotor	1
110	W-299110-00	Throttle Valve	1	208	W-276208-00	Rotor Blade	9
115	W-299115-00	Throttle Valve Sheet	1	209	W-299209-00	Cylinder	1
117	D-001117-00	Throttle Valve Spring	1	(B05)	SP-28	Spring Pin	1
121	M-073121-00	Throttle Valve Lever	1	(B06)	SP-216	Spring Pin	1
171	W-299171-00	Inlet Joint <PT>	1	210	W-299210-00	Cylinder Upper Plate	1
171	W-299171-01	Inlet Joint <NPT>	1	211	W-299211-00	Cylinder Lower Plate	1
201	W-299201-00	Housing	1	(B07)	SP-2.55	Spring Pin	1
237	W-299237-00	Muffler Pad	3	214	W-336214-00	Adjusting Washer <T=0.1>	1
250	W-299250-00	Exhaust Cover	1	214	W-336214-01	Adjusting Washer <T=0.2>	1
B01	NR-321FR	Needle Roller	1	214	W-336214-02	Adjusting Washer <T=0.3>	1
B02	SP-325	Spring Pin	1	215	W-323215-00	Adjusting Washer <T=0.1>	1
C01	O-S28F	"O"Ring	1	215	W-323215-01	Adjusting Washer <T=0.2>	1
C02	O-S12.5	"O"Ring	1	215	W-323215-02	Adjusting Washer <T=0.5>	1
CP No.	W-276021-10	Oil Cylinder C.P		230	W-336230-00	Bearing Spacer 	1
104A	W-254104-00	Bushing	1	255	W-299255-00	Motor Fastening Nut	1
226	W-184226-00	Oil Plug	1	310	W-336310-00	Spindle Arbor	1
385	W-254385-00	Adjusting Screw	1	423	W-336423-00	Bevel Pinion	1
438	W-331438-00	Spindle	1	426	W-336426-01	Bevel Gear 	1
587	W-254587-00	Oil Cylinder	1	(541A)	W-252541-00	Button Retainer Spring <F>	1
588	W-254588-01	Oil Cylinder Upper Plate	1	551	W-252551-00	Plug	1
589	W-254589-00	Oil Cylinder Lower Plate	1	(583)	W-252583-00	Retainer Button <F>	1
590A	W-276590-00	Spindle Blade	1	430	W-336430-00	No.1 Gear Case	1
590B	W-276590-01	Spindle Blade	1	432	W-336432-00	Gear Case Cover	1
591	W-254591-00	Blade Spring	2	434	A-099434-00	Bearing Washer	1
592	W-254592-00	Cylinder Case	1	435	W-336435-00	Thrust Washer	1
711	W-254711-00	Cylinder Cover	1	436	W-336436-00	Bearing Holder	1
B03	NR-2.56	Needle Roller	2	490	W-336490-00	Spindle Bushing	1
B04	NR-2.512	Needle Roller	2	541B	W-252541-00	Button Retainer Spring <F>	1
C03	O-S27.5F (H)	"O"Ring	1	593	W-336593-00	Front Case	1
C04	O-S2F (H)	"O"Ring	1	651	W-100651-00	Hanger	1
C05	BR-S2.5FT2	Back Up Ring	1	A01	BB-EE2	Ball Bearing	1
C06	BR-112F	Back Up Ring	1	A02	BB-EE3	Ball Bearing	1
C07	O-KX12 (H)	"X"Ring	1	A03	BB-697	Ball Bearing	1
C08	O-S3 (H)	"O"Ring	1	B08	NR-413.5	Needle Roller	1
104B	W-336104-00	Bushing	1	C09	O-S12.5	"O"Ring	2
131	W-299131-00	Reverse Valve	1	C10	O-S10	"O"Ring	1
133	W-299133-00	Reverse Valve Sheet	1	D01	CS-45B	Cap Screw	1
134	W-299134-00	Reverse Valve Spring	1	J01	B-3	Ball	2
135	W-216135-00	Reverse Valve Lever	1	Z01	NP-1076	Name Plate	1
140	W-336140-00	Cup Nut	1	Z02	NPN-0×3.2	Screw Rivet	2

□ CP No. denotes the assembled parts comprising of more than 1 pc. of parts.
 The related parts are shown in the thick frame.
 □ #209, 211 and 426 are supplied together with parts shown in ().
 □ Specify parts number and quantity in ordering.

■ Standard Accessory
 · F-701-1··· 1.5mm Hex. Pin Wrench 1.