



USER MANUAL

BOLT & NUT SETTERS
SCREW DRIVERS

ABRASIVE TOOLS

DRILLS • TAPPERS

PERCUSSION TOOLS

AIR MOTORS & OTHERS

OTHER PRODUCTS

PULSE WRENCH

MODELS : FPW-550-3, -550D-3, -550D-30



FPW-550-3



FPW-550D-3, -30

<BIT SIZE>

	FPW-550D-3	FPW-550D-30
	A : 9.5mm	A : 13mm
	B : 12mm	B : 16mm

SPECIFICATIONS

Model	Capacity Bolt Size (Guidance)		Adjustable Torque Range			Free Speed	Side to Center		Square Drive Size		Bit shank Size		Overall Length (without socket)		Mass (without socket)		Air Consumption (Under Load)	
	mm	in	N·m	kgf·m	ft·lb	min ⁻¹	mm	in	mm	in	mm	in	mm	in	kg	lb	Nm ³ /min	Nft ³ /min
FPW-550-3	6~8	1/4~5/16	27~44	2.8~4.5	20.3~33	6,100	22.5	5/8	9.5	3/8	—	—	151	5 15/16	0.95	2.1	0.40	0.41
FPW-550D-3	6~8	1/4~5/16	20~34	2.0~3.5	15~25.5	6,100	22.5	5/8	—	—	6.35	1/4	151	5 15/16	0.95	2.1	0.40	0.41
FPW-550D-30	6~8	1/4~5/16	20~34	2.0~3.5	15~25.5	6,100	22.5	5/8	—	—	6.35	1/4	151	5 15/16	0.95	2.1	0.40	0.41

Air Hose Size : 6.3mm (1/4")
Air Inlet Thread Size : 1/4" (PT or NPT)

The performance figures are at 0.63MPa (6.3bar).

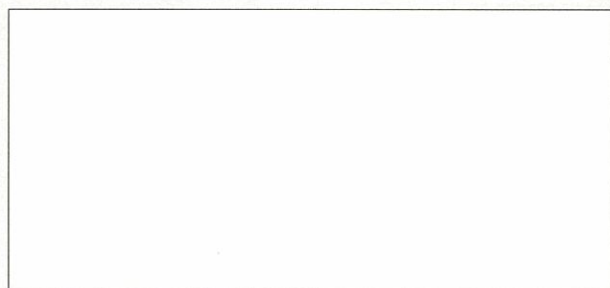
⚠ Refer to "The Instructions and Warning for Safety Use" enclosed in each tool box.

FUJI AIR TOOLS CO., LTD.

2-1-14 Kamiji, Higashinariku, Osaka 537-0003, Japan

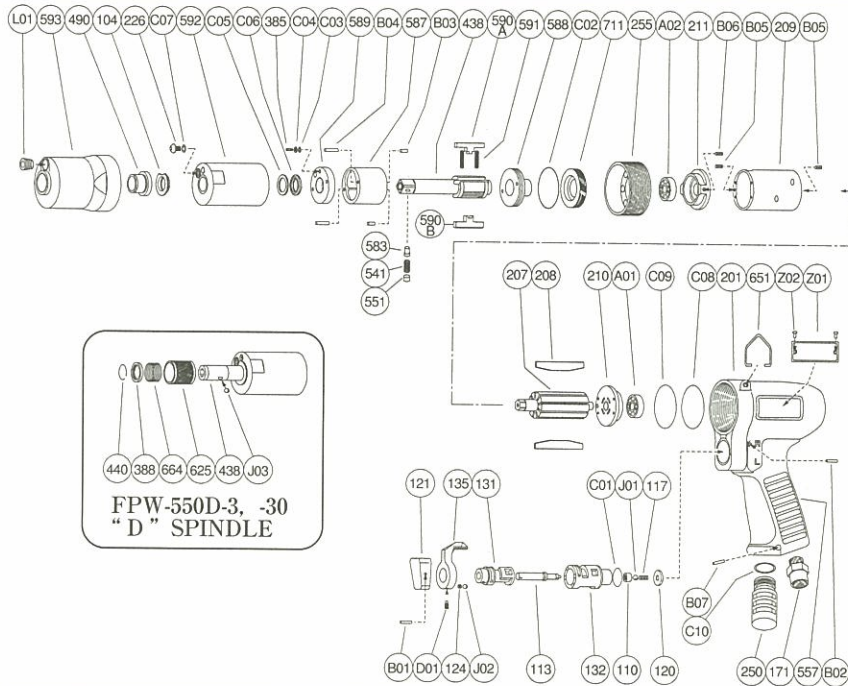
Tel : (06) 6972-2335

Fax : (06) 6972-2250



PARTS LIST MODEL: FPW-550-3, -550D-3, -550D-30

EXPLODED VIEW



FPW-550-3

PARTS LIST

Index No.	Parts No.			Parts Name	Qt.
	FPW-550-3	FPW-550D-3	FPW-550D-30		
CP No.	W-285006-04	○	○	Housing CP	
110	W-276110-01	○	○	Throttle Valve	1
113	W-276113-01	○	○	Throttle Valve Rod	1
117	W-276117-00	○	○	Throttle Valve Spring	1
120	W-276120-01	○	○	Throttle Valve Cover	1
121	W-254121-00	○	○	Throttle Valve Lever	1
124	W-254124-00	○	○	Knock Spring	1
131	W-276131-00	○	○	Reverse Valve	1
132	W-276132-01	○	○	Reverse Valve Bushing	1
135	W-254135-00	○	○	Reverse Valve Lever	1
171	W-276171-00	○	○	Inlet Bushing (PT)	1
171	W-276171-01	○	○	Inlet Bushing (NPT)	1
201	W-285201-01	○	○	Housing	1
B01	SP-212	○	○	Spring Pin	1
B02	GP-220GLC	○	○	Grooved Pin	1
C01	O-S15	○	○	"O" Ring	1
D01	SS-46D	○	○	Set Screw	1
J01	B-4U	○	○	Ball	1
J02	B-3	○	○	Ball	1
CP No.	W-285021-09	W-285021-06	W-285021-07	Oil Cylinder CP	
104	W-254104-00	○	○	Bushing	1
226	W-184226-00	○	○	Oil Plug	1
385	W-254385-00	○	○	Adjusting Screw	1
438	W-285438-08	W-285438-05	W-285438-06	Spindle	1
541	W-252541-00	-	-	Button Retainer Spring (F)	1
551	W-252551-00	-	-	Plug	1
583	W-252583-00	-	-	Retainer Button (F)	1
587	W-285587-00	○	○	Oil Cylinder	1
588	W-254588-01	○	○	Oil Cylinder Upper Plate	1
589	W-254589-00	○	○	Oil Cylinder Lower Plate	1
590A	W-285590-00	○	○	Spindle Blade	1
590B	W-285590-01	○	○	Spindle Blade	1
591	W-254591-00	○	○	Blade Spring	2
592	W-285592-00	○	○	Cylinder Case	1
711	W-254711-00	○	○	Cylinder Cover	1
B03	NR-2.56	○	○	Needle Roller	2

Index No.	Parts No.			Parts Name	Qt.
	FPW-550-3	FPW-550D-3	FPW-550D-30		
B04	NR-2.512	○	○	Needle Roller	2
C02	O-S27.5F (H)	○	○	"O" Ring	1
C03	O-S2F (H)	○	○	"O" Ring	1
C04	BR-S2.5FT2	○	○	Back Up Ring	1
C05	BR-112F	○	○	Back Up Ring	1
C06	O-KX12 (H)	○	○	"X" Ring	1
C07	O-S3 (H)	○	○	"O" Ring	1
CP No.	W-285033-00	○	○	Front Case CP	
490	W-254490-00	○	○	Spindle Bushing	1
593	W-285593-00	○	○	Front Case	1
L01	PL-1/8	○	○	Plug	1
207	W-285207-00	○	○	Rotor	1
208	W-285208-00	○	○	Rotor Blade	9
209	W-285209-00	○	○	Cylinder	1
(B05)	SP-2.56	○	○	Spring Pin	2
210	W-276210-01	○	○	Cylinder Upper Plate	1
211	W-276211-01	○	○	Cylinder Lower Plate	1
(B06)	SP-2.55	○	○	Spring Pin	1
250	W-276250-00	○	○	Exhaust Cover	1
255	W-254255-00	○	○	Motor Fastening Nut	1
388	-	W-305388-00	○	Spring Holder	1
440	-	W-305440-00	○	Ring	1
557	W-276557-00	○	○	Rubber Protector	1
625	-	W-305625-00	○	Bit Cover	1
651	W-225651-00	○	○	Hanger	1
664	-	W-305664-00	○	Finder Spring	1
A01	BB-EE2	○	○	Ball Bearing	1
A02	BB-EE3	○	○	Ball Bearing	1
B07	SP-320	○	○	Spring Pin	1
C08	O-S34	○	○	"O" Ring	1
C09	O-S34	○	○	"O" Ring	1
C10	O-S14	○	○	"O" Ring	1
C11	O-S15	○	○	"O" Ring	1
J03	-	B-3	○	Ball	1
Z01	NP-1071	NP-1072	○	Name Plate	1
Z02	NPN-0×3.2	○	○	Screw Rivet	2

CP No. denotes the assembled parts comprising of more than 1 pc. of parts. The related parts are shown in the thick frame.
 #209, 211 and 438 are supplied together with parts shown in ().
 Specify parts number and quantity in ordering.

Standard Accessories : (FPW-550-3)
 F-701-1.....1.5mm Hex. Pin Wrench 1.
 F-705.....5 mm Hex. Pin Wrench 1.
(FPW-550D-3, -30)
 F-701-1.....1.5mm Hex. Pin Wrench 1.
 F-705.....5 mm Hex. Pin Wrench 1.
 PB-2-3.....75mm Driver Bits 1.