



USER MANUAL

PULSE WRENCH

MODELS : FPW-440-3, -440D-3, -440D-30



FPW-440-3



FPW-440D-3

< BIT SIZE >

	FPW-440D-3	FPW-440D-30
	A : 9.5mm	A : 13mm
	B : 12mm	B : 16mm

SPECIFICATIONS

Model	Capacity Screw Size (Guidance)		Adjustable Torque Range			Free Speed	Side to Center		Square Drive Size		Bit Shank Size		Overall Length (without socket)		Mass (without socket)		Air Consumption Under Load		Air Inlet Thread Size	Air Hose Size	
	mm	in	N·m	kgf·m	ft·lb	min ⁻¹	mm	in	mm	in	mm	in	mm	in	kg	lb	Nm ² /min	Nft ² /min	PT or NPT	mm	in
FPW-440-3	4~6	5/32-1/4	25~37	2.6~3.8	18.8~27.8	6,800	22.5	57/64	9.5	3/8	—	—	151	5 ¹⁵ / ₁₆	0.95	2.1	0.40	14.1	1/4"	6.3	1/4
FPW-440D-3	4~6	5/32-1/4	18~29	1.8~3.0	13.5~21.8	6,800	22.5	57/64	—	—	6.35	1/4	151	5 ¹⁵ / ₁₆	0.95	2.1	0.40	0.41	1/4"	6.3	1/4
FPW-440D-30	4~6	5/32-1/4	18~29	1.8~3.0	13.5~21.8	6,800	22.5	57/64	—	—	6.35	1/4	151	5 ¹⁵ / ₁₆	0.95	2.1	0.40	0.41	1/4"	6.3	1/4

The performance figures are at 0.63 MPa (6.3 bar).

Refer to "The Instructions and Warning for Safety Use" enclosed in each tool box.

FUJI AIR TOOLS CO., LTD.

2-1-14 Kamiji, Higashinari-ku, Osaka 537-0003, Japan

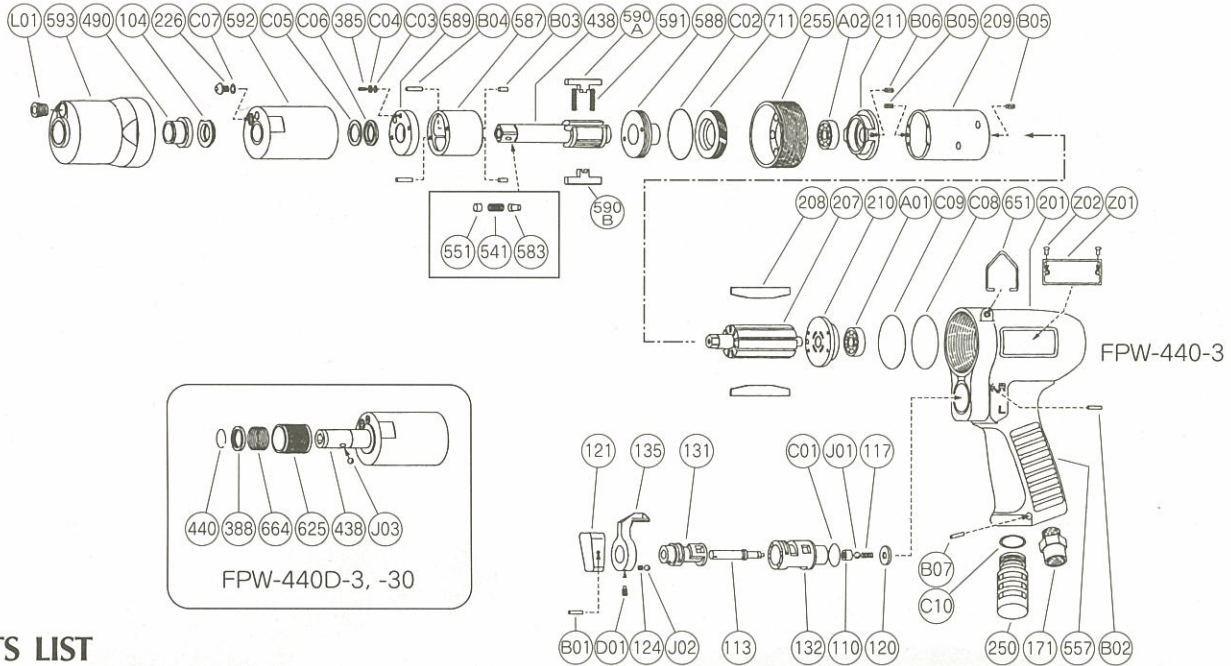
Tel : (06)6972-2335

Fax : (06)6972-2250



EXPLODED VIEW MODEL : FPW-440-3, -440D-3, 440D-30

EXPLODED VIEW



PARTS LIST

Index No.	Parts No.			Parts Name	Qt.	Index No.	Parts No.			Parts Name	Qt.
	FPW-440-3	FPW-440D-3	FPW-440D-30				FPW-440-3	FPW-440D-3	FPW-440D-30		
CP No.	W-285006-04	○	○	Housing C.P		B04	NR-2.512	○	○	Needle Roller	2
110	W-276110-01	○	○	Throttle Valve	1	C02	O-S27.5F(H)	○	○	"O" Ring	1
113	W-276113-01	○	○	Throttle Valve Rod	1	C03	O-S2F(H)	○	○	"O" Ring	1
117	W-276117-00	○	○	Throttle Valve Spring	1	C04	BR-S2.5FT2	○	○	Back Up Ring	1
120	W-276120-01	○	○	Throttle Valve Cover	1	C05	BR-112F	○	○	Back Up Ring	1
121	W-254121-00	○	○	Throttle Valve Lever	1	C06	O-KX12(H)	○	○	"X" Ring	1
124	W-254124-00	○	○	Knock Spring	1	C07	O-S3(H)	○	○	"O" Ring	1
131	W-276131-00	○	○	Reverse Valve	1	CP No.	W-285033-00	○	○	Front Case C.P	1
132	W-276132-01	○	○	Reverse Valve Bushing	1	490	W-254490-00	○	○	Spindle Bushing	1
135	W-254135-00	○	○	Reverse Valve Lever	1	593	W-285593-00	○	○	Front Case	1
171	W-276171-00	○	○	Inlet Bushing <PT>	1	L01	PL-1/8	○	○	Plug	1
171	W-276171-01	○	○	Inlet Bushing <NPT>	1	207	W-289207-00	○	○	Rotor	1
201	W-285201-01	○	○	Housing	1	208	W-289208-00	○	○	Rotor Blade	9
B01	SP-212	○	○	Spring Pin	1	209	W-289209-00	○	○	Cylinder	1
B02	GP-220GLC	○	○	Grooved Pin	1	(B05)	SP-2.56	○	○	Spring Pin	2
C01	O-S15	○	○	"O" Ring	1	210	W-276210-01	○	○	Cylinder Upper Plate	1
D01	SS-46D	○	○	Set Screw	1	211	W-289211-00	○	○	Cylinder Lower Plate	1
J01	B-4U	○	○	Ball	1	(B06)	SP-2.55	○	○	Spring Pin	1
J02	B-3	○	○	Ball	1	250	W-289250-00	○	○	Exhaust Cover	1
CP No.	W-285021-09	W-285021-06	W-285021-07	Oil Cylinder C.P	1	255	W-254255-00	○	○	Motor Fastening Nut	1
104	W-254104-00	○	○	Bushing	1	388	—	W-305388-00	○	Spring Holder	1
226	W-184226-00	○	○	Oil Plug	1	440	—	W-305440-00	○	Ring	1
385	W-254385-00	○	○	Adjusting Screw	1	557	W-276557-00	○	○	Rubber Protector	1
438	W-285438-08	W-285438-05	W-285438-06	Spindle	1	625	—	W-305625-00	○	Bit Cover	1
(541)	W-252541-00	—	—	Button Retainer Spring <F>	1	651	W-225651-00	○	○	Hanger	1
551	W-252551-00	—	—	Plug	1	664	—	W-305664-00	○	Finder Spring	1
583	W-252583-00	—	—	Retainer Button <F>	1	A01	BB-EE2	○	○	Ball Bearing	1
587	W-285587-00	○	○	Oil Cylinder	1	A02	BB-EE3	○	○	Ball Bearing	1
588	W-254588-01	○	○	Oil Cylinder Upper Plate	1	B07	SP-320	○	○	Spring Pin	1
589	W-254589-00	○	○	Oil Cylinder Lower Plate	1	C08	O-S34	○	○	"O" Ring	1
590A	W-285590-00	○	○	Spindle Blade	1	C09	O-S34	○	○	"O" Ring	1
590B	W-285590-01	○	○	Spindle Blade	1	C10	O-S14	○	○	"O" Ring	1
591	W-254591-00	○	○	Blade Spring	2	C11	O-S15	○	○	"O" Ring	1
592	W-285592-00	○	○	Cylinder Case	1	J03	—	B-3	○	Ball	1
711	W-254711-00	○	○	Cylinder Cover	1	Z01	NP-1074	NP-1075	○	Name Plate	1
B03	NR-2.56	○	○	Needle Roller	2	Z02	NPN-0X3.2	○	○	Screw Rivet	2

□ CP No. denotes the assembled parts comprising of more than 1 pc. of parts. The related parts are shown in the thick frame.
 □ #209, 211 and 438 are supplied together with parts shown in ().

■ Standard Accessories
 <FPW-440-3>
 F-705 5mm. Hex. Pin Wrench 1.
 F-701-1 1.5mm. Hex. Pin Wrench 1.

<FPW-440D-3, -30>
 F-705 5mm. Hex. Pin Wrench 1.
 F-701-1 1.5mm. Hex. Pin Wrench 1.
 PB-2-3 75mm. Driver Bit 1.