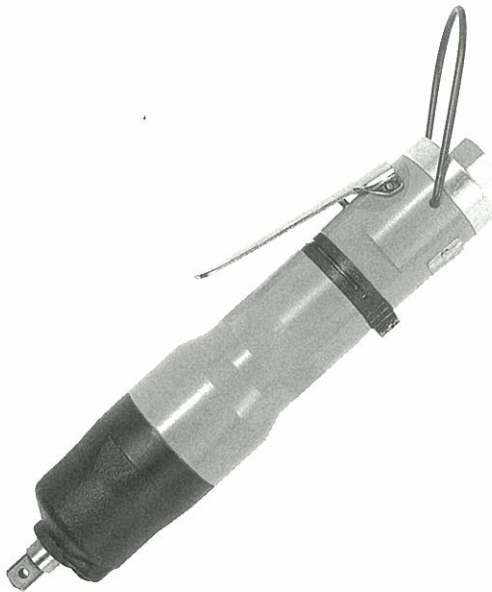




# USER MANUAL

## PNEUPULSE

MODELS : FPW-330S-1, -330SD-1, -10



FPW-330S-1



FPW-330SD-1, -10

### SPECIFICATIONS

Model	Capacity Screw Size(Guidance)		Adjustable Torque Range			Rotational Frequency	Distance from Center to Side		Square Drive Size		Bit Shank Size		Overall Length		Mass		Air Consumption (At road)	
	mm	in	N·m	kgf·m	ft·lb	min <sup>-1</sup>	mm	in	mm	in	mm	in	mm	in	kg	lb	m <sup>3</sup> /min	ft <sup>3</sup> /min
FPW-330S-1	5	3/16	13~22	1.3~2.2	9.6~16.2	4400	22.5	5/8	9.5	3/8	-	-	226	8 5/8	0.88	1.90	0.3	10.6
FPW-330SD-1	5	3/16	12~17	1.2~1.7	8.9~12.5	4400	22.5	5/8	-	-	6.35	1/4	226	8 5/8	0.88	1.90	0.3	10.6
FPW-330SD-10	5	3/16	12~17	1.2~1.7	8.9~12.5	4400	22.5	5/8	-	-	6.35	1/4	226	8 5/8	0.88	1.90	0.3	10.6

\* The performance figures are at 0.63 MPa (6.3bar).

\* Air Inlet Thread Size : PT or NPT 1/4"

\* Air Hose Size : 6.3mm (1/4")

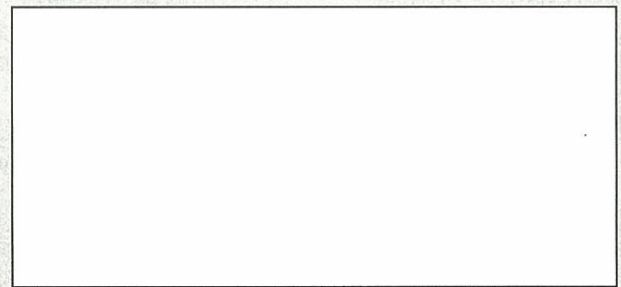
⚠ Refer to "The Instructions and Warning for Safety Use" enclosed in each tool box.

## FUJI AIR TOOLS CO., LTD.

2-1-14 Kamiji, Higashinariku, Osaka 537-0003, Japan

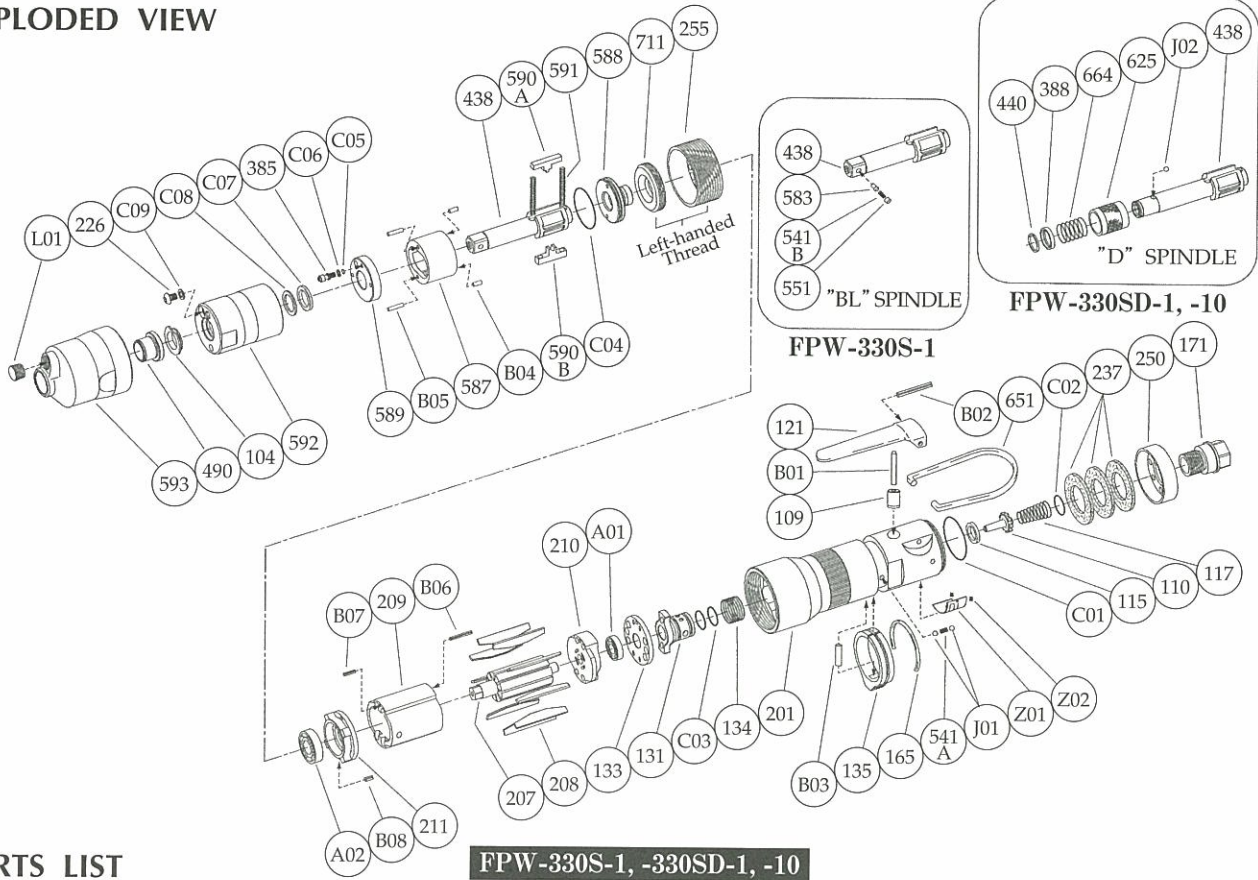
Tel : (06) 6972-2335

Fax : (06) 6972-2250



# PARTS LIST MODEL: FPW-330S-1, -330SD-1, -10

## EXPLODED VIEW



## PARTS LIST

### FPW-330S-1, -330SD-1, -10

Index No.	Parts No.	Parts Name	Qt.	Index No.	Parts No.	Parts Name	Qt.	Index No.	Parts No.	Parts Name	Qt.
<b>FPW-330S-1</b>				593	W-285593-00	Front Case	1	133	W-299133-00	Reverse Valve Sheet	1
<b>FPW-330SD-1, -10</b>				L01	PL-1/8	Plug	1	207	W-339207-00	Rotor	1
Ass'y No.	W-297006-00	Housing Ass'y		<b>FPW-330S-1</b>				208	W-339208-00	Rotor Blade	9
109	W-299109-00	Throttle Valve Bushing	1	Ass'y No.	W-285021-11	Oil Cylinder Ass'y <BL>		209	W-340209-00	Cylinder	1
110	W-299110-00	Throttle Valve	1	104	W-254104-00	Bushing	1	(B06)	SP-216	Spring Pin	1
115	W-299115-00	Throttle Valve Sheet	1	226	W-184226-00	Oil Plug	1	(B07)	SP-28	Spring Pin	1
117	D-001117-00	Throttle Valve Spring	1	385	W-254385-00	Adjusting Screw	1	210	W-340210-00	Cylinder Upper Plate	1
121	M-073121-00	Throttle Valve Lever	1	438	W-330438-01	Spindle <BL>	1	211	W-340211-00	Cylinder Lower Plate	1
131	W-299131-00	Reverse Valve	1	(541B)	W-252541-00	Button Retainer Spring <F>	1	(B08)	SP-2.55	Spring Pin	1
134	W-299134-00	Reverse Valve Spring	1	(551)	W-252551-00	Plug	1	255	W-299255-00	Motor Fastening Nut	1
135	W-216135-00	Reverse Valve Lever	1	(583)	W-252583-00	Retainer Button <F>	1	651	W-100651-00	Hanger	1
165	W-216165-00	Stop Ring	1	587	W-285587-00	Oil Cylinder	1	A01	BB-EE2	Ball Bearing	1
171	W-299171-00	Inlet Joint <PT>	1	588	W-254588-01	Oil Cylinder Upper Plate	1	A02	BB-EE3	Ball Bearing	1
171	W-299171-01	Inlet Joint <NPT>	1	589	W-254589-00	Oil Cylinder Lower Plate	1	Z01	NP-1076	Name Plate	1
201	W-297201-00	Housing	1	590A	W-285590-00	Spindle Blade	1	Z02	NPN-0×3.2	Screw Rivet	2
237	W-299237-00	Muffler Pad	3	590B	W-285590-01	Spindle Blade	1	<b>It is common with FPW-330S-1</b>			
250	W-299250-00	Exhaust Cover	1	591	W-254591-00	Blade Spring	2	<b>excluding the undermentioned parts.</b>			
541A	W-252541-00	Button Retainer Spring <F>	1	592	W-285592-00	Cylinder Case	1	<b>FPW-330D-1, -10</b>			
B01	NR-321FR	Needle Roller	1	711	W-254711-00	Cylinder Cover	1	Ass'y No.	W-285021-12	Oil Cylinder Ass'y <D>	
B02	SP-325	Spring Pin	1	B04	NR-2.56	Needle Roller	2	438	W-330438-02	Spindle <D> <For-330SD-1>	1
B03	NR-413.5	Needle Roller	1	B05	NR-2.512	Needle Roller	2	Ass'y No.	W-285021-13	Oil Cylinder Ass'y <D>	
C01	O-S28F	"O"Ring	1	C04	O-S27.5F(H)	"O"Ring	1	438	W-330438-03	Spindle <D> <For-330SD-10>	1
C02	O-S12.5	"O"Ring	1	C05	O-S2F(H)	"O"Ring	1	388	W-305388-00	Spring Holder	1
C03	O-S12.5	"O"Ring	2	C06	BR-S2.5FT2	Back Up Ring	1	440	W-305440-00	Ring	1
J01	B-3	Ball	2	C07	O-KX12(H)	"X"Ring	1	625	W-305625-00	Bit Cover	1
Ass'y No.	W-285033-00	Front Case Ass'y		C08	BR-112	Back Up Ring	1	664	W-305664-00	Finder Spring	1
490	W-254490-00	Spindle Bushing	1	C09	O-S3(H)	"O"Ring	1	J02	B-3	Ball	1

□ Ass'y No. denotes the assembled parts comprising of more than 1pc. of parts.

■ Standard Accessories : <FPW-330S-1, FPW-330SD-10>

The related parts are shown in the thick frame.

F-705...5mm Hex. Pin Wrench 1.

F-701-1...1.5mm Hex. Pin Wrench 1.

□ #209, 211 and 438 are supplied together with parts shown in ( ).

<FPW-330SD-1>

F-705...5mm Hex. Pin Wrench 1.

F-701-1...1.5mm Hex. Pin Wrench 1.

□ Specify parts number and quantity in ordering.

PB-2-3...75mm Driver Bit 1.