



USER MANUAL

PNEUPULSE

MODELS : FPW-330-1, -330D-1, -10



FPW-330-1



FPW-330D-1, -10

SPECIFICATIONS

Model	Capacity Screw Size(Guidance)		Adjustable Torque Range			Rotational Frequency	Distance from Center to Side		Square Drive Size		Bit shank Size		Overall Length		Mass		Air Consumption (At road)	
	mm	in	N·m	kgf·m	ft·lb	min ⁻¹	mm	in	mm	in	mm	in	mm	in	kg	lb	m ³ /min	ft ³ /min
FPW-330-1	5	3/16	18~27	1.8~2.8	13.3~19.9	6000	22.5	57/64	9.5	3/8	-	-	151	5 15/16	0.95	2.10	0.35	12.4
FPW-330D-1	5	3/16	13~20	1.3~2.0	9.6~14.8	6000	22.5	57/64	-	-	6.35	1/4	151	5 15/16	0.95	2.10	0.35	12.4
FPW-330D-10	5	3/16	13~20	1.3~2.0	9.6~14.8	6000	22.5	57/64	-	-	6.35	1/4	151	5 15/16	0.95	2.10	0.35	12.4

*The performance figures are at 0.63 MPa (6.3bar).

*Air Inlet Thread Size : PT or NPT 1/4"

*Air Hose Size : 6.3mm (1/4")

⚠ Refer to "The Instructions and Warning for Safety Use" enclosed in each tool box.

FUJI AIR TOOLS CO., LTD.

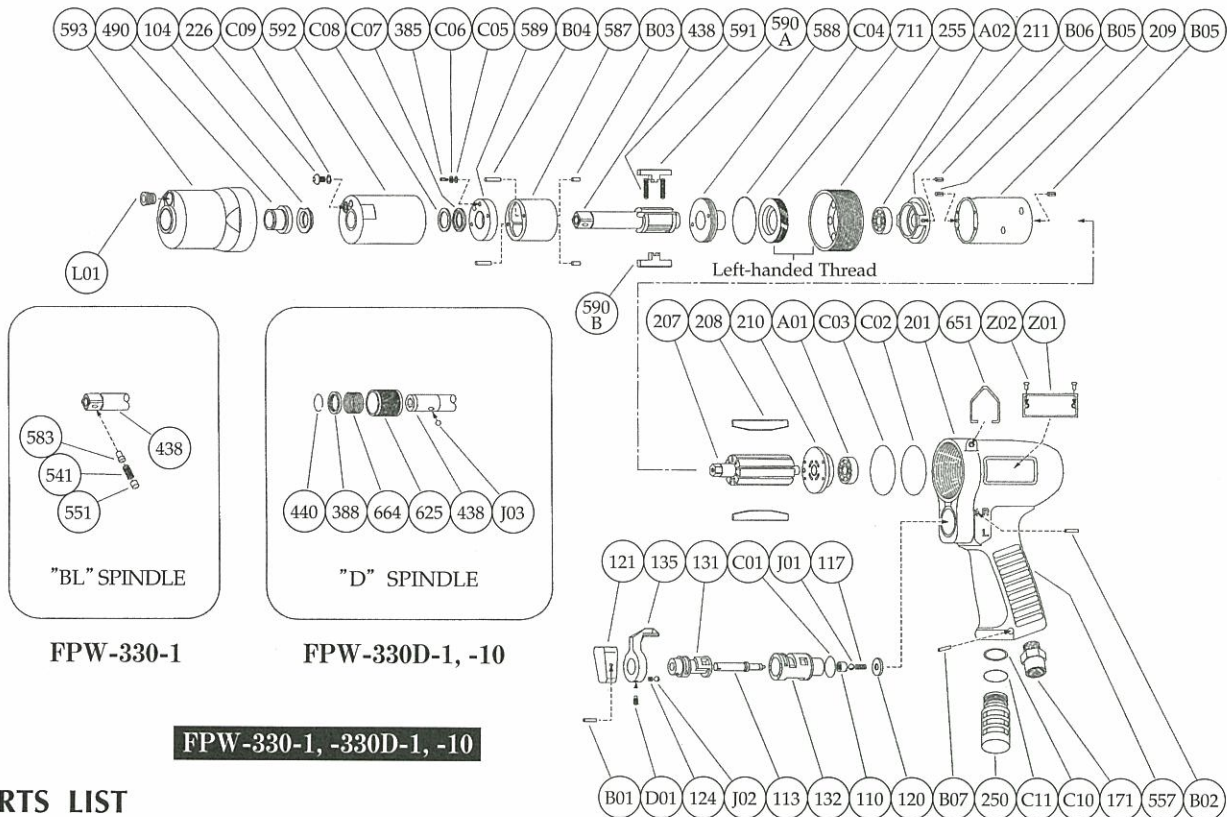
2-1-14 Kamiji, Higashinariku, Osaka 537-0003, Japan

Tel : (06) 6972-2335

Fax : (06) 6972-2250

PARTS LIST MODEL: FPW-330-1, -330D-1, -10

EXPLODED VIEW



FPW-330-1

FPW-330D-1, -10

FPW-330-1, -330D-1, -10

PARTS LIST

Index No.	Parts No.	Parts Name	Qt.	Index No.	Parts No.	Parts Name	Qt.	Index No.	Parts No.	Parts Name	Qt.
FPW-330-1				FPW-330-1				(B05)	SP-2.56	Spring Pin	2
FPW-330D-1, -10				FPW-330-1				210	W-276210-01	Cylinder Upper Plate	1
Ass'y No.	W-285006-04	Housing Ass'y		Ass'y No.	W-285021-11	Oil Cylinder Ass'y<BL>		211	W-339211-00	Cylinder Lower Plate	1
110	W-276110-01	Throttle Valve	1	104	W-254104-00	Bushing	1	(B06)	SP-2.55	Spring Pin	1
113	W-276113-01	Throttle Valve Rod	1	226	W-184226-00	Oil Plug	1	250	W-289250-00	Exhaust Cover	1
117	W-276117-00	Throttle Valve Spring	1	385	W-254385-00	Adjusting Screw	1	255	W-254255-00	Motor Fastening Nut	1
120	W-276120-01	Throttle Valve Cover	1	438	W-330438-01	Spindle <BL>	1	557	W-276557-00	Rubber Protector	1
121	W-254121-00	Throttle Valve Lever	1	(541)	W-252541-00	Button Retainer Spring<F>	1	651	W-225651-00	Hanger	1
124	W-254124-00	Knock Spring	1	551	W-252551-00	Plug	1	A01	BB-EE2	Ball Bearing	1
131	W-276131-00	Reverse Valve	1	583	W-252583-00	Retainer Button <F>	1	A02	BB-EE3	Ball Bearing	1
132	W-276132-01	Reverse Valve Bushing	1	587	W-285587-00	Oil Cylinder	1	B07	SP-320	Spring Pin	1
135	W-254135-00	Reverse Valve Lever	1	588	W-254588-01	Oil Cylinder Upper Plate	1	C10	O-S14	"O"Ring	1
171	W-276171-00	Inlet Bushing <PT>	1	589	W-254589-00	Oil Cylinder Lower Plate	1	C11	O-S15	"O"Ring	1
171	W-276171-01	Inlet Bushing <NPT>	1	590A	W-285590-00	Spindle Blade	1	Z01	NP-1118	Name Plate	1
201	W-285201-01	Housing	1	590B	W-285590-01	Spindle Blade	1	Z02	NPN-0×3.2	Screw Rivet	2
B01	SP-212	Spring Pin	1	591	W-254591-00	Blade Spring	2	It is common with FPW-330-1			
B02	GP-220GLC	Grooved Pin	1	592	W-285592-00	Cylinder Case	1	excluding the undermentioned parts.			
C01	O-S15	"O"Ring	1	592	W-285592-00	Cylinder Case	1	FPW-330D-1, -10			
C02	O-S34	"O"Ring	1	711	W-254711-00	Cylinder Cover	1	Ass'y No.	W-285021-12	Oil Cylinder Ass'y<D>	
C03	O-S34	"O"Ring	1	B03	NR-2.56	Needle Roller	2	438	W-330438-02	Spindle <D> <For-330D-1>	1
D01	SS-46D	Set Screw	1	B04	NR-2.512	Needle Roller	2	Ass'y No.	W-285021-13	Oil Cylinder Ass'y<D>	
J01	B-4U	Urethane Ball	1	C04	O-S27.5F(H)	"O"Ring	1	438	W-330438-03	Spindle <D> <For-330D-10>	1
J02	B-3	Ball	1	C05	O-S2F(H)	"O"Ring	1	388	W-305388-00	Spring Holder	1
Ass'y No.	W-285033-00	Front Case Ass'y		C06	BR-S2.5FT2	Back Up Ring	1	440	W-305440-00	Ring	1
490	W-254490-00	Spindle Bushing	1	C07	O-KX12(H)	"X"Ring	1	625	W-305625-00	Bit Cover	1
593	W-285593-00	Front Case	1	C08	BR-112	Back Up Ring	1	664	W-305664-00	Finder Spring	1
L01	PL-1/8	Plug	1	C09	O-S3(H)	"O"Ring	1	J03	B-3	Ball	1
				207	W-339207-00	Rotor	1	Z01	NP-1119	Name Plate	2
				208	W-339208-00	Rotor Blade	9				
				209	W-339209-00	Cylinder	1				

□ Ass'y No. denotes the assembled parts comprising of more than 1pc. of parts.

■ Standard Accessories : <FPW-330-1, FPW-330D-10>

The related parts are shown in the thick frame.

F-705···5mm Hex. Pin Wrench 1.

□ #209, 211 and 438 are supplied together with parts shown in ().

F-701-1···1.5mm Hex. Pin Wrench 1.

□ Specify parts number and quantity in ordering.

<FPW-330D-1>

F-705···5mm Hex. Pin Wrench 1.

F-701-1···1.5mm Hex. Pin Wrench 1.

PB-2-3···75mm Driver Bit 1.