



USER MANUAL

— PULSE WRENCH SHUT-OFF TYPE —

MODELS : FPT-770SC-1

BOLT & NUT SETTERS
SCREW DRIVERS

ABRASIVE TOOLS

DRILLS • TAPPERS

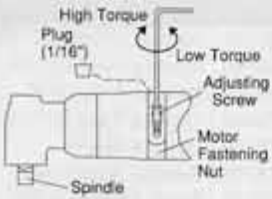
PERCUSSION TOOLS

AIR MOTORS & OTHERS

OTHER PRODUCTS

■ Torque is preset at the min. torque of Recommended Torque Range when the tool is shipped. Adjust torque before use.

■ How to Adjust Torque



3. Turn Adjusting Screw clockwise by F-701-1 Hex Pin Wrench to increase torque and counter clockwise to decrease torque.

1. Unscrew Plug(1/16") on Motor Fastening Nut by F-704 Hex Pin Wrench.

4. Screw Plug back to Motor Fastening Nut by F-704 Hex Pin Wrench after setting torque.

2. Turn Spindle by hand until Adjusting Screw can be seen through Plug hole.

5. Always set Plug to Motor Fastening Nut when using wrench.



FPT-770SC-1

SPECIFICATIONS

Model	Bolt Size	Recommended Torque Range			Rotational Frequency	Distance from Center to Side		Square Drive Size		Overall Length		Mass		Air Consumption (At Load)		Air Hose Size	
		mm	N·m	kgf·m		ft·lb	mm	in	mm	in	mm	in	kg	lb	m ³ /min	ft ³ /min	mm
FPT-770SC-1	M8	20~35	2.0~3.6	14.8~25.8	5,500	27.0	1 5/64	9.5	3/8	306	12 3/64	2.3	5.1	0.45	15.9	9.5	3/8

Air Inlet Thread : PT or NPT 1/4"

Use above model at 0.5~0.63MPa (5.0~6.3kgf/cm²) air pressure. The performance figures are at 0.63MPa (6.3bar).

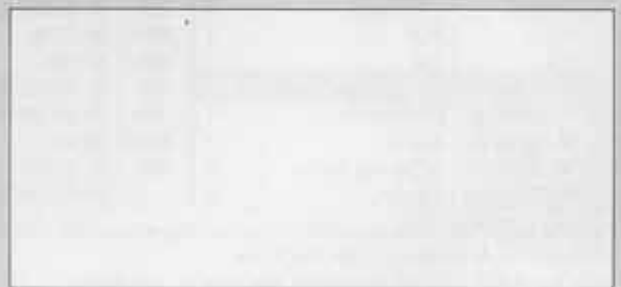
⚠ Refer to "The Instructions and Warning for Safety Use" enclosed in each tool box.

FUJI AIR TOOLS CO., LTD.

2-1-14 Kamiji, Higashinari-ku, Osaka, 537-0003 Japan

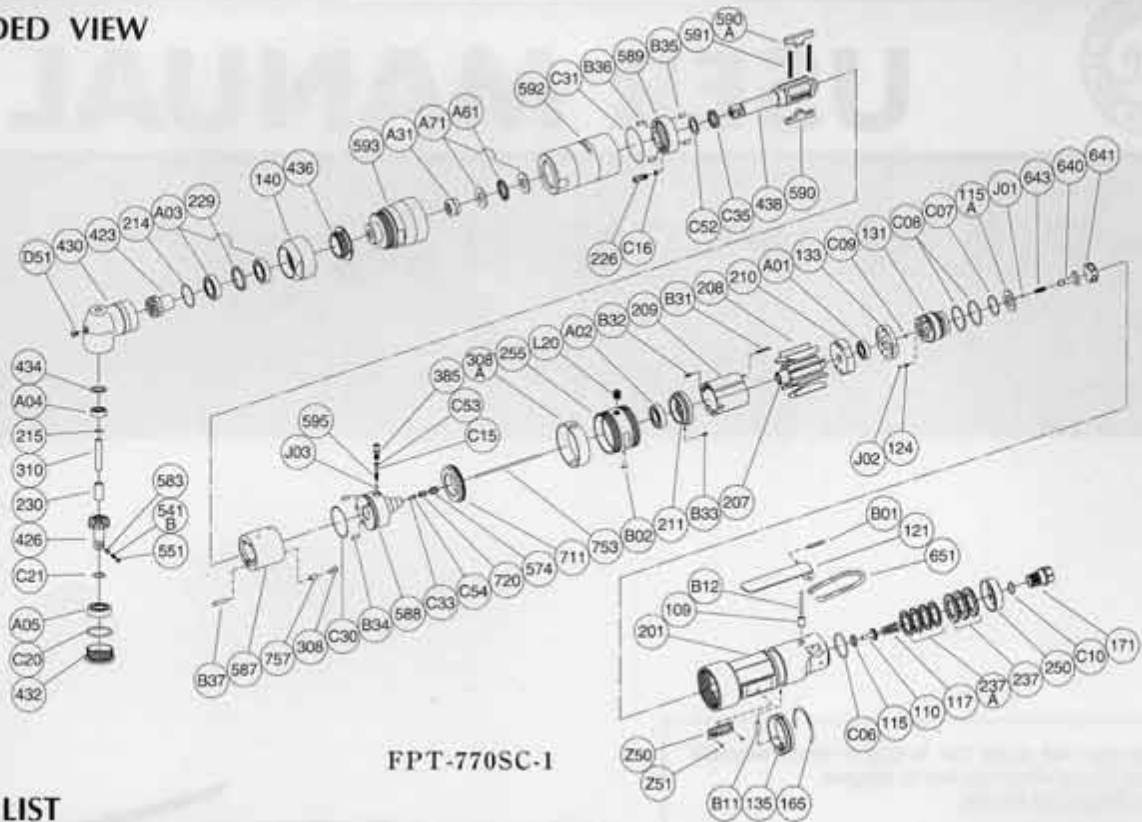
Tel : (06) 6972-2335

Fax : (06) 6972-2250



PARTS LIST MODEL: FPT-770SC-1

EXPLODED VIEW



FPT-770SC-1

PARTS LIST

Index No.	Parts No.	Parts Name	Qt.	Index No.	Parts No.	Parts Name	Qt.	Index No.	Parts No.	Parts Name	Qt.
Assy No.	W-357006-00	Housing Ass'y (PT)		574	W-326574-00	Bolt Holder	1		W-323214-02	Adjusting Washer (T=0.3)	1
Assy No.	W-357006-01	Housing Ass'y (NPT)		587	W-279587-00	Oil Cylinder	1	215	W-323215-00	Adjusting Washer (B) (T=0.1)	1
109	W-299109-00	Throttle Valve Bushing	1	588	W-326588-00	Oil Cylinder Upper Plate	1		W-323215-01	Adjusting Washer (B) (T=0.2)	1
110	W-299110-00	Throttle Valve	1	589	W-326589-00	Oil Cylinder Lower Plate	1		W-323215-02	Adjusting Washer (B) (T=0.5)	1
115	W-299115-00	Throttle Valve Sheet	1	590	W-279590-00	Spindle Blade	1	229	W-323229-00	Bearing Spacer	1
115A	W-357115-00	Throttle Valve Sheet	1	590A	W-279590-01	Spindle Blade	1	230	W-323230-00	Bearing Spacer (B)	1
117	D-001117-00	Throttle Valve Spring	1	591	W-279591-00	Blade Spring	2	255	W-357255-00	Motor Fastening Nut	1
121	W-175121-00	Throttle Valve Lever	1	592	W-326592-00	Cylinder Case	1	308A	W-357308-00	Spacer	1
124	W-254124-00	Knock Spring	1	595	W-353595-00	Torque Adjusting Spring	1	310	W-323310-00	Spindle Arbor	1
131	W-357131-00	Reverse Valve	1	711	W-326711-00	Cylinder Cover	1	423	W-323423-00	Bevel Pinion	1
133	W-357133-00	Reverse Valve Sheet	1	720	W-300720-00	Piston	1	426	W-323426-01	Bevel Gear	1
135	W-322135-00	Reverse Valve Lever	1	757	W-279757-00	Needle	1	541B	W-252541-00	Button Retainer Spring	1
165	W-322165-00	Stop Ring	1	B34	NR-3.056	Needle Roller	2	551	W-252551-00	Plug	1
171	W-299171-00	Inlet Joint (PT)	1	B35	NR-3.056	Needle Roller	2	583	W-252583-00	Retainer Button (F)	1
	W-299171-01	Inlet Joint (NPT)	1	B36	GP-36G	Grooved Pin	2	430	W-358430-00	No.1 Gear Case	1
201	W-357201-00	Housing	1	B37	NR-313.5	Needle Roller	1	432	W-323432-00	Gear Case Cover	1
237	W-299237-00	Muffler Pad	3	C15	O-P3 (H)	"O" Ring	1	434	A-021434-00	Bearing Washer	1
237A	W-322237-00	Muffler Pad	4	C16	O-S2.5F (H)	"O" Ring	1	436	W-358436-00	Bearing Holder	1
250	W-299250-00	Exhaust Cover	1	C30	O-S30 (H)	"O" Ring	1	593	W-358593-00	Front Case	1
640	W-357640-00	Stop Valve	1	C31	O-1530-24 (H)	"O" Ring	1	651	W-100651-00	Hanger	1
641	W-357641-00	Stop Valve Front Cover	1	C33	O-S1.4F	"O" Ring	1	753	W-357753-00	Piston Rod	1
643	W-357643-00	Stop Valve Spring	1	C35	O-KX12 (H)	"X" Ring	1	A01	BB-6900	Ball Bearing	1
B01	SP-322	Spring Pin	1	C52	BR-112	Back Up Ring	1	A02	BB-6902	Ball Bearing	1
B11	NR-416	Needle Roller	1	C53	BR-P3T2	Back Up Ring	1	A03	BB-6903	Ball Bearing	2
B12	NR-326FR	Needle Roller	1	C54	BR-S2.5FT2	Back Up Ring	1	A04	BB-607	Ball Bearing	1
C06	O-S28F	"O" Ring	1	J03	B-3	Ball	1	A05	BB-6001	Ball Bearing	1
C07	O-S22	"O" Ring	1	140	W-358140-00	Cup Nut	1	A31	NB-RNA499	Needle Bearing	1
C08	O-S28	"O" Ring	2	207	W-326207-00	Rotor	1	A61	NB-NTB1226	Thrust Needle Bearing	1
C09	O-S2	"O" Ring	1	208	W-326208-00	Rotor Blade	9	A71	TW-AS1226	Thrust Washer	2
C10	O-S12.5	"O" Ring	1	209	W-322209-00	Cylinder	1	B02	NR-36	Needle Roller	1
J01	B-4	Ball	1	(B31)	SP-2.518	Spring Pin	1	C20	O-S28F	"O" Ring	1
J02	B-3	Ball	1	(B32)	SP-2.58	Spring Pin	1	C21	O-S12	"O" Ring	1
Assy No.	W-326021-06	Oil Cylinder Ass'y		210	W-322210-00	Cylinder Upper Plate	1	D51	CS-46B	Cap Screw	1
226	W-279226-00	Oil Plug	1	211	W-357211-00	Cylinder Lower Plate	1	L20	PL-1/16	Plug	1
308	W-326308-00	Spacer	1	(B33)	SP-2.55	Spring Pin	1	Z50	NP-1147	Name Plate	1
385	W-326385-01	Adjusting Screw	1	214	W-323214-00	Adjusting Washer (T=0.1)	1	Z51	NPN-0X3.2	Screw Rivet	2
438	W-279438-06	Spindle	1		W-323214-01	Adjusting Washer (T=0.2)	1				

□ Assy No. denotes no. of the assembled parts comprising of more than 1 pc. of parts.

The related parts are shown in the thick frame.

□ Index Nos. 209, 211 and 426 are supplied together with parts shown in ()

□ Specify parts number and quantity in ordering.

■ Standard Accessories : F-701-1.....15mm Hex. Pin Wrench 1.

F-704.....4mm Hex. Pin Wrench 1.