



USER MANUAL

— PULSE WRENCH SHUT-OFF TYPE —

MODELS : FPT-770S-1

BOLT & NUT SETTERS
SCREW DRIVERS

ABRASIVE TOOLS

DRILLS · TAPPERS

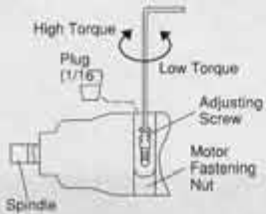
PERCUSSION TOOLS

AIR MOTORS & OTHERS

OTHER PRODUCTS

■ Torque is preset at the min. torque of Recommended Torque Range when the tool is shipped. Adjust torque before use.

■ How to Adjust Torque



3. Turn Adjusting Screw clockwise by F-701-1 Hex Pin Wrench to increase torque and counter clockwise to decrease torque.

4. Screw Plug back to Motor Fastening Nut by F-704 Hex Pin Wrench after setting torque.

5. Always set Plug to Motor Fastening Nut when using wrench.

1. Unscrew Plug (1/16") on Motor Fastening Nut by F-704 Hex Pin Wrench.

2. Turn Spindle by hand until Adjusting Screw can be seen through Plug hole.



FPT-770S-1

SPECIFICATION

Model	Bolt Size	Recommended Torque Range			Rotational Frequency	Distance from Center to Side		Square Drive Size		Overall Length		Mass		Air Consumption (At Load)		Air Hose Size	
		mm	N·m	kgf·m		ft·lb	mm	in	mm	in	mm	in	kg	lb	m ³ /min	ft ³ /min	mm
FPT-770S-1	M8-M10	30-45	3.1-4.6	22.1-33.2	5500	27	5/64	9.5	3/8	273.5	10 49/64	1.6	3.5	0.45	15.9	9.5	3/8

- Air Inlet Thread : PT or NPT 1/4"
- Use all above model at 0.5-0.63 MPa (5.0-6.3kgf/cm²) air pressure.
- The performance figures are at 0.63MPa(6.3bar).



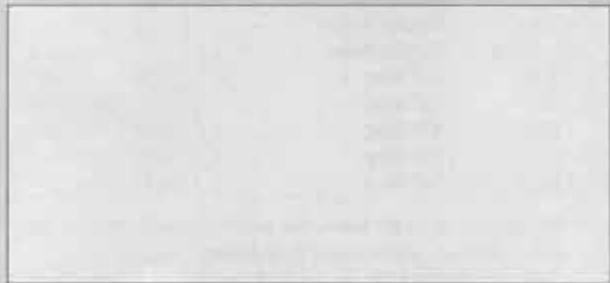
Refer to "The Instructions and Warning for Safety Use" enclosed in each tool box.

FUJI AIR TOOLS CO., LTD.

2-1-14 Kamiji, Higashinari-ku, Osaka 537-0003, Japan

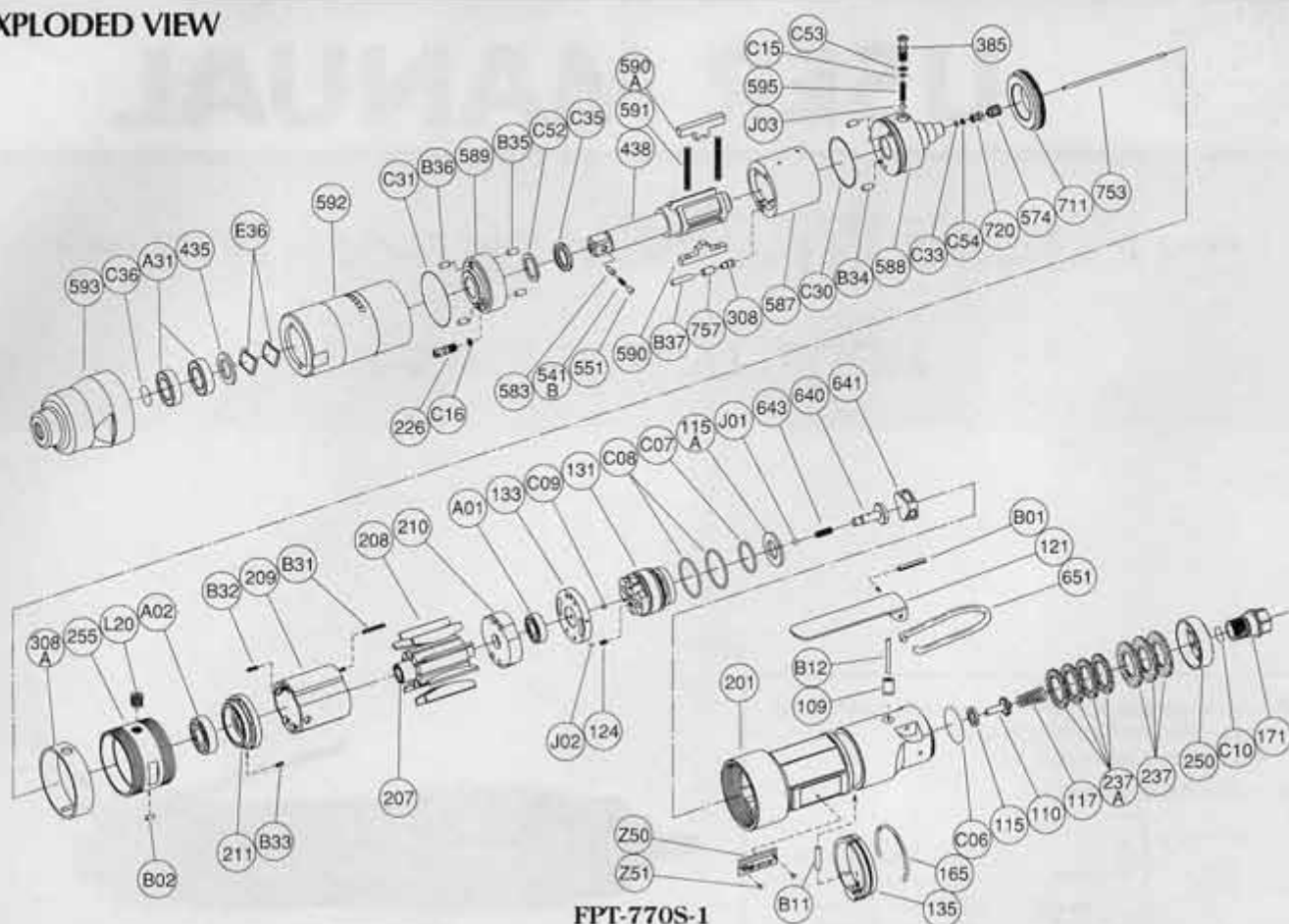
Tel : (06)6972-2335

Fax : (06)6972-2250



PARTS LIST MODEL: FPT-770S-1

EXPLODED VIEW



FPT-770S-1

PARTS LIST

Index No.	Parts No.	Parts Name	Qt.	Index No.	Parts No.	Parts Name	Qt.	Index No.	Parts No.	Parts Name	Qt.
FPT-770S-1											
Assy No.	W-357006-00	Housing Assy <PT>		J01	B-4	Ball	1	C35	O-KX12(H)	"X" Ring	1
Assy No.	W-357006-01	Housing Assy <NPT>		J02	B-3	Ball	1	C52	BR-112	Back Up Ring	1
109	W-299109-00	Throttle Valve Bushing	1	Assy No.	W-326021-05	Oil Cylinder Assy <BF>		C53	BR-P3T2	Back Up Ring	1
110	W-299110-00	Throttle Valve	1	226	W-279226-00	Oil Plug	1	C54	BR-S2.5FT2	Back Up Ring	1
115	W-299115-00	Throttle Valve Sheet	1	308	W-326308-00	Spacer	1	J03	B-3	Ball	1
115A	W-357115-00	Throttle Valve Sheet	1	385	W-326385-01	Adjusting Screw	1	Assy No.	W-357033-00	Front Case Assy	
117	D-001117-00	Throttle Valve Spring	1	438	W-279438-07	Spindle 	1	593	W-357593-00	Front Case	1
121	W-175121-00	Throttle Valve Lever	1	541B	W-252541-00	Button Retainer Spring	1	A31	BB-6801ZZ	Ball Bearing	2
124	W-254124-00	Knock Spring	1	551	W-252551-00	Plug	1	C36	O-P12	"O" Ring	1
131	W-357131-00	Reverse Valve	1	583	W-252583-00	Retainer Button <F>	1	207	W-326207-00	Rotor	1
133	W-357133-00	Reverse Valve Sheet	1	574	W-326574-00	Bolt Holder	1	208	W-326208-00	Rotor Blade	9
135	W-322135-00	Reverse Valve Lever	1	587	W-279587-00	Oil Cylinder	1	209	W-322209-00	Cylinder	1
165	W-322165-00	Stop Ring	1	588	W-326588-00	Oil Cylinder Upper Plate	1	(B31)	SP-2.518	Spring Pin	1
171	W-299171-00	Inlet Joint <PT>	1	589	W-326589-00	Oil Cylinder Lower Plate	1	(B32)	SP-2.58	Spring Pin	1
	W-299171-01	Inlet Joint <NPT>	1	590	W-279590-00	Spindle Blade	1	210	W-322210-00	Cylinder Upper Plate	1
201	W-357201-00	Housing	1	590A	W-279590-01	Spindle Blade	1	211	W-357211-00	Cylinder Lower Plate	1
237	W-299237-00	Muffler Pad	3	591	W-279591-00	Blade Spring	2	(B33)	SP-2.55	Spring Pin	1
237A	W-322237-00	Muffler Pad	4	592	W-326592-00	Cylinder Case	1	255	W-357255-00	Motor Fastening Nut	1
250	W-299250-00	Exhaust Cover	1	595	W-326595-00	Torque Adjusting Spring	1	308A	W-357308-00	Spacer	1
640	W-357640-00	Stop Valve	1	711	W-326711-00	Cylinder Cover	1	435	W-300435-00	Thrust Washer	1
641	W-357641-00	Stop Valve Front Cover	1	720	W-300720-00	Piston	1	651	W-100651-00	Hanger	1
643	W-357643-00	Stop Valve Spring	1	757	W-279757-00	Needle	1	753	W-357753-00	Piston Rod	1
B01	SP-322	Spring Pin	1	B34	NR-3.056	Needle Roller	2	A01	BB-6900	Ball Bearing	1
B11	NR-416	Needle Roller	1	B35	NR-3.056	Needle Roller	2	A02	BB-6902	Ball Bearing	1
B12	NR-326FR	Needle Roller	1	B36	GP-36G	Grooved Pin	2	B02	NR-36	Needle Roller	1
C06	O-S28F	"O" Ring	1	B37	NR-313.5	Needle Roller	1	E36	WW-12	Wave Washer	2
C07	O-S22	"O" Ring	1	C15	O-P3(H)	"O" Ring	1	L20	PL-1/16	Plug	1
C08	O-S28	"O" Ring	1	C16	O-S2.5F(H)	"O" Ring	1	Z50	NP-1143	Name Plate	1
C09	O-S2	"O" Ring	2	C30	O-S30(H)	"O" Ring	1	Z51	NPN-0X3.2	Screw Rivet	2
C10	O-S12.5	"O" Ring	1	C31	O-1530-24(H)	"O" Ring	1				
				C33	O-S14F	"O" Ring	1				

□ Assy No. denotes no. of the assembled parts comprising of more than 1 pc. of parts.

The related parts are shown in the thick frame.

□ Index Nos. 209, 211 and 438 are supplied together with parts shown in ().

□ Specify parts number and quantity in ordering.

■ Standard Accessory : F-701-1.....1.5mm Hex. Pin Wrench 1.

F-704.....4mm Hex. Pin Wrench 1.