



USER MANUAL

— ANGLE PULSE WRENCH SHUT-OFF TYPE —

MODELS : FPT-660SC-1

BOLT & NUT SETTERS
SCREW DRIVERS

ABRASIVE TOOLS

DRILLS • TAPPERS

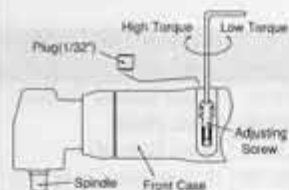
PERCUSSION TOOLS

AIR MOTORS & OTHERS

OTHER PRODUCTS

■ Torque is preset at the min. torque of Recommended Torque Range when the tool is shipped. Adjust torque before use.

■ How to Adjust Torque



3. Turn Adjusting Screw clockwise by F-701-1 Hex Pin Wrench to increase torque and counter clockwise to decrease torque.

1. Unscrew Plug(1/32") on Front Case by F-712 Hex Pin Wrench.

4. Screw Plug back to Front Case by F-712 Hex Pin Wrench after setting torque.

2. Turn Spindle by hand until Adjusting Screw can be seen through Plug hole.

5. Always set Plug to Front Case when using wrench.



FPT-660SC-1

SPECIFICATIONS

Model	Bolt Size	Recommended Torque Range			Rotational Frequency	Distance from Center to Side		Square Drive Size		Overall Length		Mass		Air Consumption (At Load)		Air Inlet Thread Size
		mm	N·m	kgf·m		ft·lb	mm	in	mm	in	mm	in	kg	lb	m ³ /min	
FPT-660SC-1	M6~M8	15~25	1.5~2.6	11.1~18.4	4,700	16	41/64	9.5	3/8	292	11 1/2	1.54	3.4	0.35	12.4	PT or NPT 1/4

Air Hose Size : 9.5mm (3/8")

Use all above models at 0.5~0.63MPa (5.0~6.3kgf/cm²) air pressure. The performance figures are at 0.63MPa (6.3bar).

⚠ Refer to "The Instructions and Warning for Safety Use" enclosed in each tool box.

FUJI AIR TOOLS CO., LTD.

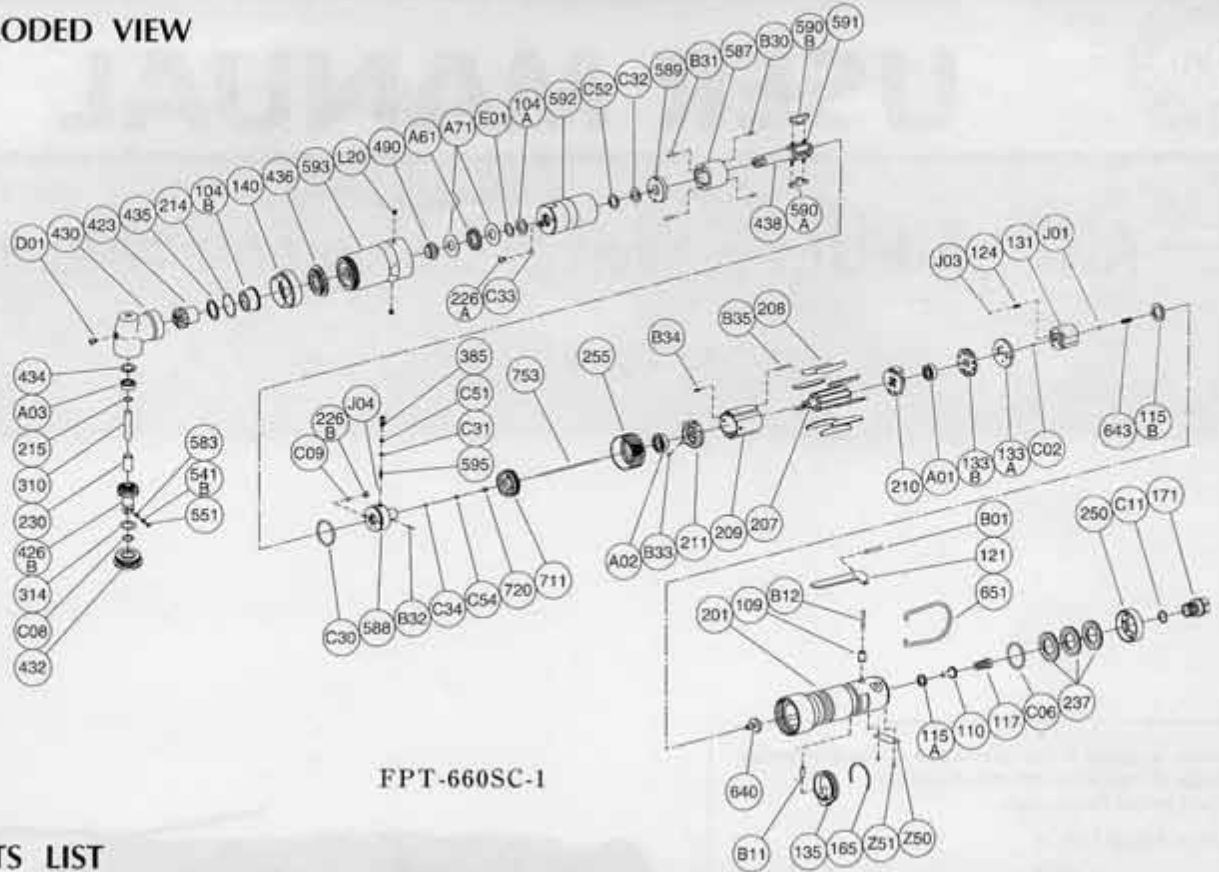
2-1-14 Kamiji, Higashinariku, Osaka 537-0003, Japan

Tel : (06) 6972-2335

Fax : (06) 6972-2250

PARTS LIST MODEL: FPT-660SC-1

EXPLODED VIEW



FPT-660SC-1

PARTS LIST

Index No.	Parts No.	Parts Name	Qt.	Index No.	Parts No.	Parts Name	Qt.	Index No.	Parts No.	Parts Name	Qt.
Assy No.	W-344006-00	Housing Ass'y (PT)		C30	O-S275F (H)	"O" Ring	1	314	A-005314-01	Wheel Spindle Washer	1
Assy No.	W-344006-01	Housing Ass'y (NPT)		C31	O-P3 (H)	"O" Ring	1	423	W-336423-00	Bevel Pinion	1
109	W-299109-00	Throttle Valve Bushing	1	C32	O-KX12 (H)	"X" Ring	1	426B	W-336426-01	Bevel Gear (B)	1
110	W-299110-00	Throttle Valve	1	C33	O-S3 (H)	"O" Ring	1	541B	W-252541-00	Button Retainer Spring	1
115A	W-299115-00	Throttle Valve Sheet	1	C34	O-SLAF	"O" Ring	1	551	W-252551-00	Plug	1
117	D-001117-00	Throttle Valve Spring	1	C51	BR-P3T2	Back Up Ring	1	583	W-252583-00	Retainer Button (F)	1
121	M-073121-00	Throttle Valve Lever	1	C52	BR-112	Back Up Ring	1	430	W-336430-00	No.1 Gear Case	1
171	W-299171-00	Inlet Joint (PT)	1	C54	BR-S25FT2	Back Up Ring	1	432	W-336432-00	Gear Case Cover	1
	W-299171-01	Inlet Joint (NPT)	1	J04	B-3	Ball	1	434	A-099434-00	Bearing Washer	1
201	W-344201-00	Housing	1	104B	W-336104-00	Bushing	1	435	W-336435-00	Thrust Washer	1
237	W-299237-00	Muffler Pad	3	115B	W-343115-00	Throttle Valve Sheet	1	436	W-336436-00	Bearing Holder	1
250	W-299250-00	Exhaust Cover	1	124	G-005124-00	Knock Spring	1	490	W-331490-00	Spindle Bushing	1
B01	SP-325	Spring Pin	1	131	W-343131-00	Reverse Valve	1	593	W-356593-00	Front Case	1
B12	NR-321FR	Needle Roller	1	133A	W-343133-00	Reverse Valve Sheet	1	640	W-343640-00	Stop Valve	1
C06	O-S28F	"O" Ring	1	133B	W-343133-01	Reverse Valve Sheet	1	643	W-343643-01	Stop Valve Spring	1
Assy No.	W-331021-08	Oil Cylinder Ass'y		135	W-216135-00	Reverse Valve Lever	1	651	W-100651-00	Hanger	1
104A	W-254104-00	Bushing	1	140	W-336140-00	Cup Nut	1	753	W-344753-00	Piston Rod	1
226A	W-184226-00	Oil Plug	1	165	W-216165-00	Stop Ring	1	A01	BB-EE2	Ball Bearing	1
226B	W-331226-00	Oil Plug	1	207	W-311207-00	Rotor	1	A02	BB-EE3	Ball Bearing	1
385	W-331385-00	Adjusting Screw	1	208	W-276208-00	Rotor Blade	9	A03	BB-697	Ball Bearing	1
438	W-331438-00	Spindle	1	209	W-344209-00	Cylinder	1	A61	NB-NTB1226	Thrust Needle Bearing	1
587	W-254587-00	Oil Cylinder	1	(B34)	SP-28	Spring Pin	1	A71	TW-AS1226	Thrust Washer	2
588	W-343588-00	Oil Cylinder Upper Plate	1	(B35)	SP-220	Spring Pin	1	B11	NR-412	Needle Roller	1
589	W-331589-00	Oil Cylinder Lower Plate	1	210	W-299210-00	Cylinder Upper Plate	1	C02	O-S2	"O" Ring	1
590A	W-276590-00	Spindle Blade	1	211	W-343211-00	Cylinder Lower Plate	1	C08	O-S12	"O" Ring	1
590B	W-276590-01	Spindle Blade	1	(B33)	SP-255	Spring Pin	1	C11	O-S125	"O" Ring	1
591	W-254591-00	Blade Spring	2	214	W-336214-00	Adjusting Washer (T=0.1)	1	D01	CS-45B	Button Head Cap Screw	1
592	W-331592-00	Cylinder Case	1		W-336214-01	Adjusting Washer (T=0.2)	1	E01	WW-12	Wave Washer	1
595	W-330595-00	Torque Adjusting Spring	1		W-336214-02	Adjusting Washer (T=0.3)	1	J01	B-4	Ball	1
711	W-331711-00	Cylinder Cover	1	215	W-323215-00	Adjusting Washer (B) (T=0.1)	1	J03	B-3	Ball	1
720	W-302720-00	Piston	1		W-323215-01	Adjusting Washer (B) (T=0.2)	1	L20	PL-1/32	Plug	2
B30	NR-256	Needle Roller	2		W-323215-02	Adjusting Washer (B) (T=0.5)	1	Z50	NP-1141	Name Plate	1
B31	NR-2512	Needle Roller	2	230	W-336230-00	Bearing Spacer (B)	1	Z51	NPN-0X32	Screw Rivet	2
B32	P-15105	Pin	1	255	W-299255-00	Motor Fastening Nut	1				
C09	O-S3 (H)	"O" Ring	1	310	W-336310-00	Spindle Arbor	1				

□ Assy No. denotes no. of the assembled parts comprising of more than 1 pc. of parts.

The related parts are shown in the thick frame.

□ Index Nos. 208, 211 and 426B are supplied together with parts shown in ().

□ Specify parts number and quantity in ordering.

■ Standard Accessories : F-701-1.....15mm Hex. Pin Wrench 1.

F-712.....2mm Hex. Pin Wrench 1.