



USER MANUAL

— ANGLE PULSE WRENCH SHUT-OFF TYPE —

MODELS : FPT-440SC-1

BOLT & NUT SETTERS
SCREW DRIVERS

ABRASIVE TOOLS

DRILLS • TAPPERS

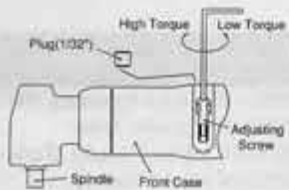
PERCUSSION TOOLS

AIR MOTORS & OTHERS

OTHER PRODUCTS

- Torque is preset at the min. torque of Recommended Torque Range when the tool is shipped. Adjust torque before use.

■ How to Adjust Torque



3. Turn Adjusting Screw clockwise by F-701-1 Hex Pin Wrench to increase torque and counter clockwise to decrease torque.

1. Unscrew Plug(1/32") on Front Case by F-712 Hex Pin Wrench.

4. Screw Plug back to Front Case by F-712 Hex Pin Wrench after setting torque.

2. Turn Spindle by hand until Adjusting Screw can be seen through Plug hole.

5. Always set Plug to Front Case when using wrench.



FPT-440SC-1

SPECIFICATIONS

Model	Bolt Size	Recommended Torque Range			Rotational Frequency	Distance from Center to Side		Square Drive Size		Overall Length		Mass		Air Consumption (At Load)		Air Inlet Thread Size
		mm	N·m	kgf·m		ft·lb	mm	in	mm	in	mm	in	kg	lb	m ³ /min	
FPT-440SC-1	M5~M6	6~11	0.6~1.1	4.4~8.1	4,500	14.5	37/64	9.5	3/8	280	11 1/32	1.46	3.2	0.35	12.4	PT or NPT 1/4

Air Hose Size : 6.3mm (1/4")

Use all above models at 0.5~0.63MPa (5.0~6.3kgf/cm²) air pressure.
The performance figures are at 0.63MPa (6.3bar).

⚠ Refer to "The Instructions and Warning for Safety Use" enclosed in each tool box.

FUJI AIR TOOLS CO., LTD.

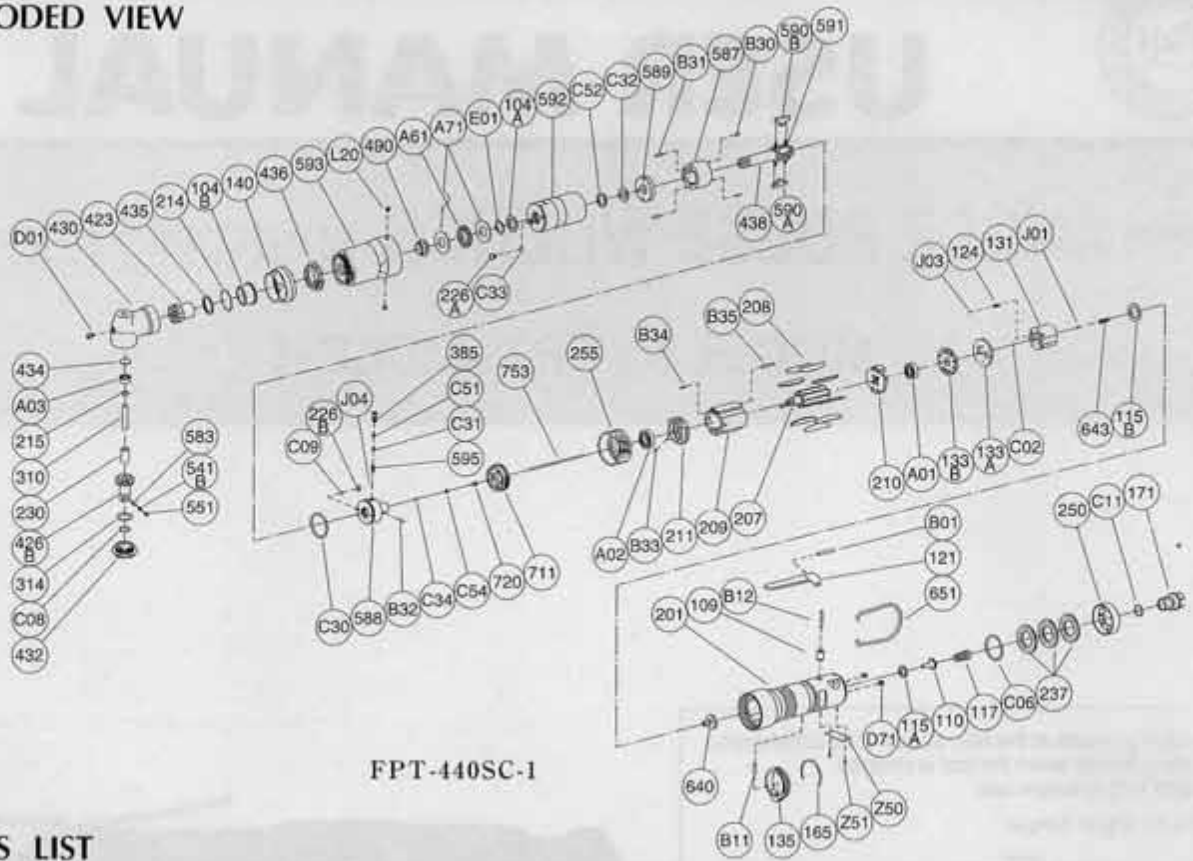
2-1-14 Kamiji, Higashinariku, Osaka 537-0003, Japan

Tel : (06) 6972-2335

Fax : (06) 6972-2250

PARTS LIST MODEL: FPT-440SC-1

EXPLODED VIEW



FPT-440SC-1

PARTS LIST

Index No.	Parts No.	Parts Name	Qt.	Index No.	Parts No.	Parts Name	Qt.	Index No.	Parts No.	Parts Name	Qt.
Assy No.	W-354006-00	Housing Ass'y (PT)		B32	P-15105	Pin	1	255	W-299255-00	Motor Fastening Nut	1
Assy No.	W-354006-01	Housing Ass'y (NPT)		C09	O-S3 (H)	"O" Ring	1	310	W-337310-00	Spindle Arbor	1
109	W-299109-00	Throttle Valve Bushing	1	C30	O-S275F (H)	"O" Ring	1	314	A-005314-01	Wheel Spindle Washer	1
110	W-299110-00	Throttle Valve	1	C31	O-P3 (H)	"O" Ring	1	423	W-337423-00	Bevel Pinion	1
115A	W-299115-00	Throttle Valve Sheet	1	C32	O-KX12 (H)	"X" Ring	1	426B	W-337426-01	Bevel Gear (B)	1
117	D-001117-00	Throttle Valve Spring	1	C33	O-S3 (H)	"O" Ring	1	541B	W-252541-00	Button Retainer Spring	1
121	M-073121-00	Throttle Valve Lever	1	C34	O-S14F	"O" Ring	1	551	W-252551-00	Plug	1
171	W-299171-00	Inlet Joint (PT)	1	C51	BR-P3T2	Back Up Ring	1	583	W-252583-00	Retainer Button (F)	1
	W-299171-01	Inlet Joint (NPT)	1	C52	BR-112	Back Up Ring	1	430	W-337430-00	No.1 Gear Case	1
201	W-354201-00	Housing	1	C54	BR-S25FT2	Back Up Ring	1	432	W-337432-00	Gear Case Cover	1
(D71)	SS-56	Set Screw	2	J04	B-3	Ball	1	434	W-337434-00	Bearing Washer	1
237	W-299237-00	Muffler Pad	3	104B	W-337104-00	Bushing	1	435	W-214435-00	Thrust Washer	1
250	W-299250-00	Exhaust Cover	1	115B	W-343115-00	Throttle Valve Sheet	1	436	W-337436-00	Bearing Holder	1
B01	SP-325	Spring Pin	1	124	G-005124-00	Knock Spring	1	490	W-331490-00	Spindle Bushing	1
B12	NR-321FR	Needle Roller	1	131	W-343131-00	Reverse Valve	1	593	W-354593-00	Front Case	1
C06	O-S28F	"O" Ring	1	133A	W-343133-00	Reverse Valve Sheet	1	640	W-343640-00	Stop Valve	1
C11	O-S12.5	"O" Ring	1	133B	W-343133-01	Reverse Valve Sheet	1	643	W-343643-01	Stop Valve Spring	1
Assy No.	W-329021-04	Oil Cylinder Ass'y		135	W-216135-00	Reverse Valve Lever	1	651	W-100651-00	Hanger	1
104A	W-254104-00	Bushing	1	140	W-337140-00	Cup Nut	1	753	W-343753-00	Piston Rod	1
226A	W-184226-00	Oil Plug	1	165	W-216165-00	Stop Ring	1	A01	BB-EE2	Ball Bearing	1
226B	W-331226-00	Oil Plug	1	207	W-310207-00	Rotor	1	A02	BB-EE3	Ball Bearing	1
385	W-331385-00	Adjusting Screw	1	208	W-289208-00	Rotor Blade	9	A03	BB-L1360	Ball Bearing	1
438	W-330438-00	Spindle (P)	1	209	W-342209-00	Cylinder	1	A61	NB-NTB1226	Thrust Needle Bearing	1
587	W-285587-00	Oil Cylinder	1	(B34)	SP-28	Spring Pin	1	A71	TW-AS1226	Thrust Washer	2
588	W-343588-00	Oil Cylinder Upper Plate	1	(B35)	SP-220	Spring Pin	1	B11	NR-412	Needle Roller	1
589	W-331589-00	Oil Cylinder Lower Plate	1	210	W-299210-00	Cylinder Upper Plate	1	C02	O-S2	"O" Ring	1
590A	W-285590-00	Spindle Blade	1	211	W-342211-00	Cylinder Lower Plate	1	C08	O-S12	"O" Ring	1
590B	W-285590-01	Spindle Blade	1	(B33)	SP-255	Spring Pin	1	D01	CS-45B	Button Head Cap Screw	1
591	W-254591-00	Blade Spring	2	214	W-337214-00	Adjusting Washer (T=0.1)	1	E01	WW-12	Wave Washer	1
592	W-330592-00	Cylinder Case	1		W-337214-01	Adjusting Washer (T=0.2)	1	J01	B-4	Ball	1
595	W-329595-00	Torque Adjusting Spring	1		W-337214-02	Adjusting Washer (T=0.3)	1	J03	B-3	Ball	1
711	W-331711-00	Cylinder Cover	1	215	W-337215-00	Adjusting Washer (B) (T=0.1)	1	L20	PL-1/32	Plug	2
720	W-302720-00	Piston	1		W-337215-01	Adjusting Washer (B) (T=0.2)	1	Z50	NP-1139	Name Plate	1
B30	NR-256	Needle Roller	2		W-337215-02	Adjusting Washer (B) (T=0.5)	1	Z51	NPN-0X3.2	Screw Rivet	2
B31	NR-2512	Needle Roller	2	230	W-337230-00	Bearing Spacer (B)	1				

□ Assy No. denotes no. of the assembled parts comprising of more than 1 pc. of parts.

The related parts are shown in the thick frame.

□ Index Nos. 201, 209, 211 and 426B are supplied together with parts shown in ().

□ Specify parts number and quantity in ordering.

■ Standard Accessories : F-701-1.....1.5mm Hex. Pin Wrench 1.

F-712.....2mm Hex. Pin Wrench 1.