



# USER MANUAL

## TORQUE CONTROL PULSE WRENCH

MODELS : FPT-330S-1, FPT-330SD-1, -10



FPT-330S-1



FPT-330SD-1, -10

### SPECIFICATIONS

Model	Capacity Screw Size (Guidance)		Adjustable Torque Range			Rotational Frequency	Distance from Center to Side		Square Drive Size		Bit Shank Size		Overall Length		Mass		Air Consumption (At Load)	
	mm	in	N·m	kgf·m	ft·lb	min <sup>-1</sup>	mm	in	mm	in	mm	in	mm	in	kg	lb	m <sup>3</sup> /min	ft <sup>3</sup> /min
FPT-330S-1	5~6	13/64~1/4	6~10	0.6~1.0	4.5~7.5	5,100	23	29/32	9.5	3/8	—	—	249	9 13/16	1.1	2.4	0.35	12.4
FPT-330SD-1	5~6	13/64~1/4	6~10	0.6~1.0	4.5~7.5	6,100	23	29/32	—	—	6.35	1/4	249	9 13/16	1.1	2.4	0.35	12.4
FPT-330SD-10	5~6	13/64~1/4	6~10	0.6~1.0	4.5~7.5	6,100	23	29/32	—	—	6.35	1/4	249	9 13/16	1.1	2.4	0.35	12.4

\*Air Inlet Thread Size:PT or NPT 1/4"

\*Air Hose Size:6.3mm (1/4")

\*Use all above models at 0.5~0.63MPa (5.0~6.3bar) air pressure.

The performance figures are at 0.63MPa (6.3bar).

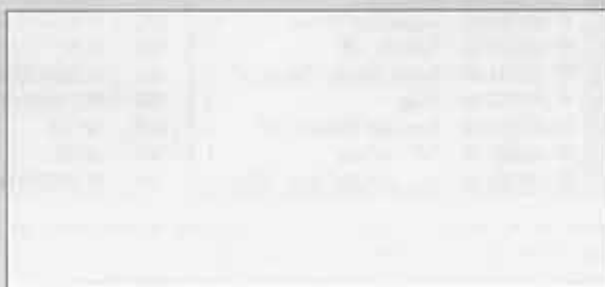
Refer to "The Instructions and Warning for Safety Use" enclosed in each tool box.

FUJI AIR TOOLS CO., LTD.

2-1-14 Kamiji, Higashinariku, Osaka 537-0003, Japan

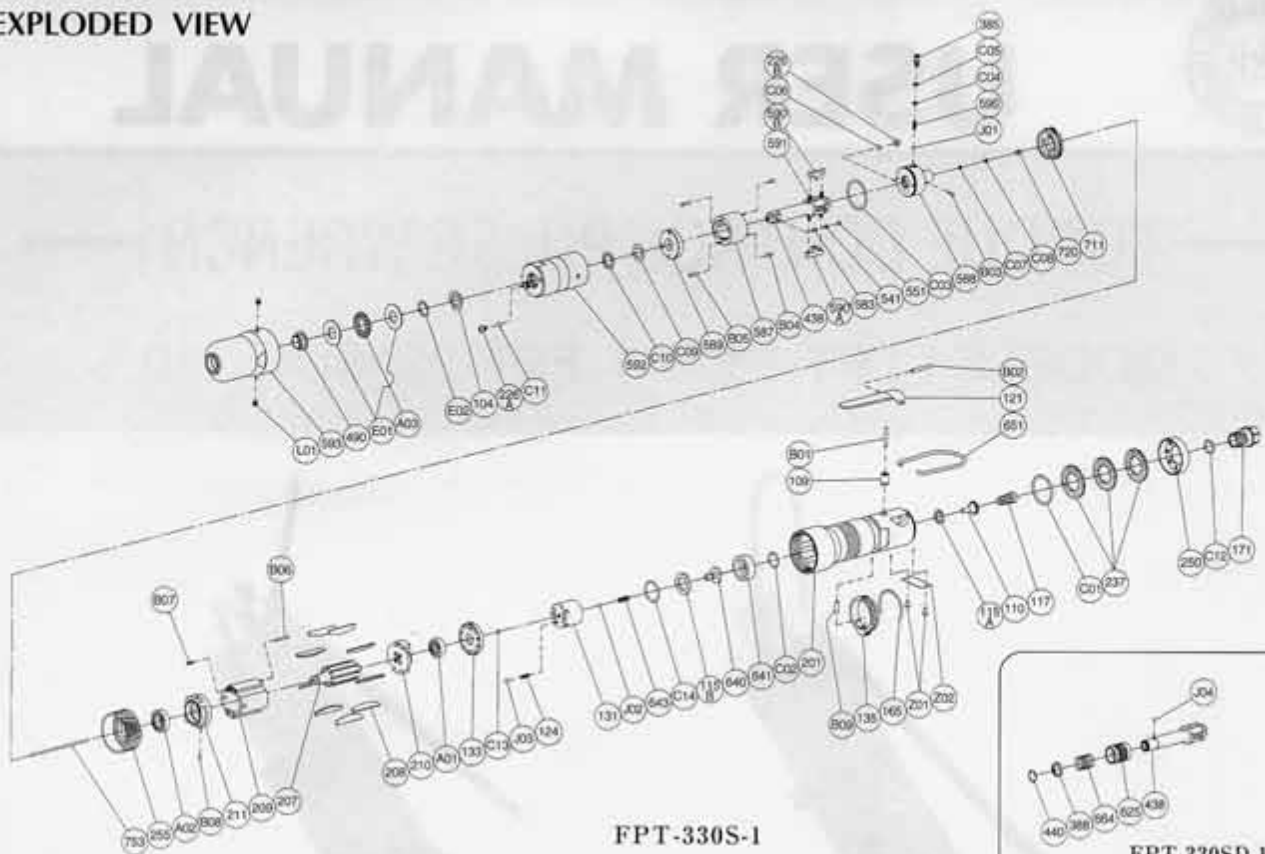
Tel : (06) 6972-2335

Fax : (06) 6972-2250



# PARTS LIST MODEL: FPT-330S-1, FPT-330SD-1, -10

## EXPLODED VIEW



FPT-330S-1

FPT-330SD-1, 10  
"D" SPINDLE

## PARTS LIST

Index No.	Parts No.	Parts Name	Qt.	Index No.	Parts No.	Parts Name	Qt.	Index No.	Parts No.	Parts Name	Qt.
<b>FPT-330S-1, FPT-330SD-1, -10</b>				589	W-331589-00	Oil Cylinder Lower Plate	1	211	W-340211-00	Cylinder Lower Plate	1
Assy No.	W-347006-00	Housing Assy		590A	W-285590-00	Spindle Blade	1	(B08)	SP-255	Spring Pin	1
109	W-299109-00	Throttle Valve Bushing	1	590B	W-285590-01	Spindle Blade	1	255	W-299255-00	Motor Fastening Nut	1
110	W-299110-00	Throttle Valve	1	591	W-254591-00	Blade Spring	2	640	W-347640-00	Stop Valve	1
115A	W-299115-00	Throttle Valve Sheet	1	592	W-330592-00	Cylinder Case	1	643	W-343643-01	Stop Valve Spring	1
117	D-001117-00	Throttle Valve Spring	1	595	W-347595-00	Torque Adjusting Spring	1	651	W-100651-00	Hanger	1
121	M-073121-00	Throttle Valve Lever	1	711	W-331711-00	Cylinder Cover	1	753	W-347753-00	Piston Rod	1
171	W-299171-00	Inlet Joint (PT)	1	720	W-302720-00	Piston	1	A01	BB-EE2	Ball Bearing	1
171	W-299171-01	Inlet Joint (NPT)	1	B03	P-1.510.5	Pin	1	A02	BB-EE3	Ball Bearing	1
201	W-347201-00	Housing	1	B04	NR-2.56	Needle Roller	2	A03	NB-NTB1226	Thrust Needle Bearing	1
237	W-299237-00	Muffler Pad	3	B05	NR-2.512	Needle Roller	2	B09	NR-412	Needle Roller	1
250	W-299250-00	Exhaust Cover	1	C03	O-S27.5F (H)	"O" Ring	1	C12	O-S12.5	"O" Ring	1
641	W-347641-00	Stop Valve Front Cover	1	C04	O-P3 (H)	"O" Ring	1	C13	O-S2	"O" Ring	1
B01	NR-321FR	Needle Roller	1	C05	BR-P3T2	Back Up Ring	1	C14	O-S20	"O" Ring	1
B02	SP-325	Spring Pin	1	C06	O-S3 (H)	"O" Ring	1	E01	TW-AS1226	Thrust Washer	2
C01	O-S28F	"O" Ring	1	C07	O-S14F	"O" Ring	1	E02	WW-12	Wave Washer	1
C02	O-S14	"O" Ring	1	C08	BR-S2.5FT2	Back Up Ring	1	J02	B-4	Ball	1
Assy No.	W-330033-00	Front Case Assy		C09	O-KX12 (H)	"X" Ring	1	J03	B-3	Ball	1
490	W-331490-00	Spindle Bushing	1	C10	BR-112	Back Up Ring	1	Z01	NPN-0X3.2	Screw Rivet	2
593	W-330593-00	Front Case	1	C11	O-S3 (H)	"O" Ring	1	Z02	NP-1130	Name Plate	1
(L01)	PL-1/32	Plug	2	J01	B-3	Ball	1	It is common with FPT-330S-1 excluding the undermentioned parts.			
<b>FPT-330S-1</b>				115B	W-347115-00	Throttle Valve Sheet	1	<b>FPT-330SD-1, -10</b>			
Assy No.	W-347021-01	Oil Cylinder Assy		124	G-005124-00	Knock Spring	1	Assy No.	W-347021-02	Oil Cylinder Assy (D)	
104	W-254104-00	Bushing	1	131	W-347131-00	Reverse Valve	1	438	W-330438-02	Spindle (D) (for FPT-330SD-1)	1
226A	W-331226-00	Oil Plug	1	133	W-347133-00	Reverse Valve Sheet	1	Assy No.	W-347021-03	Oil Cylinder Assy (D)	
226B	W-184226-00	Oil Plug	1	135	W-216135-00	Reverse Valve Lever	1	438	W-330438-03	Spindle (D) (for FPT-330SD-10)	1
385	W-331385-00	Adjusting Screw	1	165	W-216165-00	Stop Ring	1	388	W-305388-00	Spring Holder	1
438	W-330438-01	Spindle (B)	1	207	W-347207-00	Rotor	1	440	W-305440-00	Ring	1
(541)	W-252541-00	Button Retainer Spring (F)	1	208	W-339208-00	Rotor Blade	9	625	W-305625-00	Bit Cover	1
551	W-252551-00	Plug	1	209	W-340209-00	Cylinder	1	664	W-306664-00	Finder Spring	1
583	W-252583-00	Retainer Button (F)	1	(B06)	SP-216	Spring Pin	1	J04	B-3	Ball	1
587	W-285587-00	Oil Cylinder	1	(B07)	SP-28	Spring Pin	1	Z02	NP-1131	Name Plate	1
588	W-343588-00	Oil Cylinder Upper Plate	1	210	W-340210-00	Cylinder Upper Plate	1				

- Assy No. denotes the assembled parts comprising of more than 1 pc. of parts.
- The related parts are shown in the thick frame.
- #209, 211, 438 and 593 are supplied together with parts shown in ( ).
- Specify parts number and quantity in ordering.

### ■ Standard Accessories :

(FPT-330S-1, 330SD-10)	F-701-1	.....15mm Hex. Pin Wrench	1
	F-712	.....2mm Hex. Pin Wrench	1
(FPT-330SD-1)	F-701-1	.....15mm Hex. Pin Wrench	1
	F-712	.....2mm Hex. Pin Wrench	1
	PB-23	.....75mm Drive Bit	1