



USER MANUAL

PULSE WRENCH SHUT-OFF TYPE

MODELS : FPT-330-1, FPT-330D-1, -10

BOLT & NUT SETTERS
SCREW DRIVERS

ABRASIVE TOOLS

DRILLS · TAPPERS

PERCUSSION TOOLS

AIR MOTORS & OTHERS

OTHER PRODUCTS



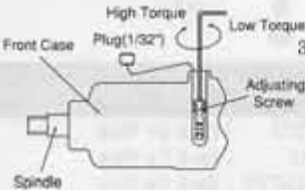
FPT-330D-1, -10



FPT-330-1

■ Torque is preset at the min. torque of Recommended Torque Range when the tool is shipped. Adjust torque before use.

■ How to Adjust Torque



3. Turn Adjusting Screw clockwise by F-701-1 Hex Pin Wrench to increase torque and counter clockwise to decrease torque.

1. Unscrew Plug(1/32") on Front Case by F-712 Hex Pin Wrench.

4. Screw Plug back to Front Case by F-712 Hex Pin Wrench after setting torque.

2. Turn Spindle by hand until Adjusting Screw can be seen through Plug hole.

5. Always set Plug to Front Case when using wrench.

SPECIFICATIONS

Model	Capacity Screw Size (Guidance)	Recommended Torque Range			Rotational Frequency	Distance from Center to Side		Bit Shank Square Drive Size		Overall Length		Mass		Air Consumption (At Load)		Air Inlet Thread Size
	mm	N·m	kgf·m	ft·lb	min ⁻¹	mm	in	mm	in	mm	in	kg	lb	m ³ /min	ft ³ /min	in
FPT-330-1	M5~M6	6~11	0.6~1.1	4.4~8.1	6,000	23	29/32	9.5	3/8	198	7 51/64	1.19	2.6	0.39	13.8	PT or NPT 1/4
FPT-330D-1(10)	M5~M6	6~11	0.6~1.1	4.4~8.1	6,000	23	29/32	6.35	1/4	198	7 51/64	1.20	2.6	0.39	13.8	PT or NPT 1/4

Air Hose Size : 6.3mm (1/4")

Use all above models at 0.5~0.63MPa (5.0~6.3kgf/cm²) air pressure. The performance figures are at 0.63MPa (6.3bar).

⚠ Refer to "The Instructions and Warning for Safety Use" enclosed in each tool box.

FUJI AIR TOOLS CO., LTD.

2-1-14 Kamiji, Higashinariku, Osaka 537-0003, Japan

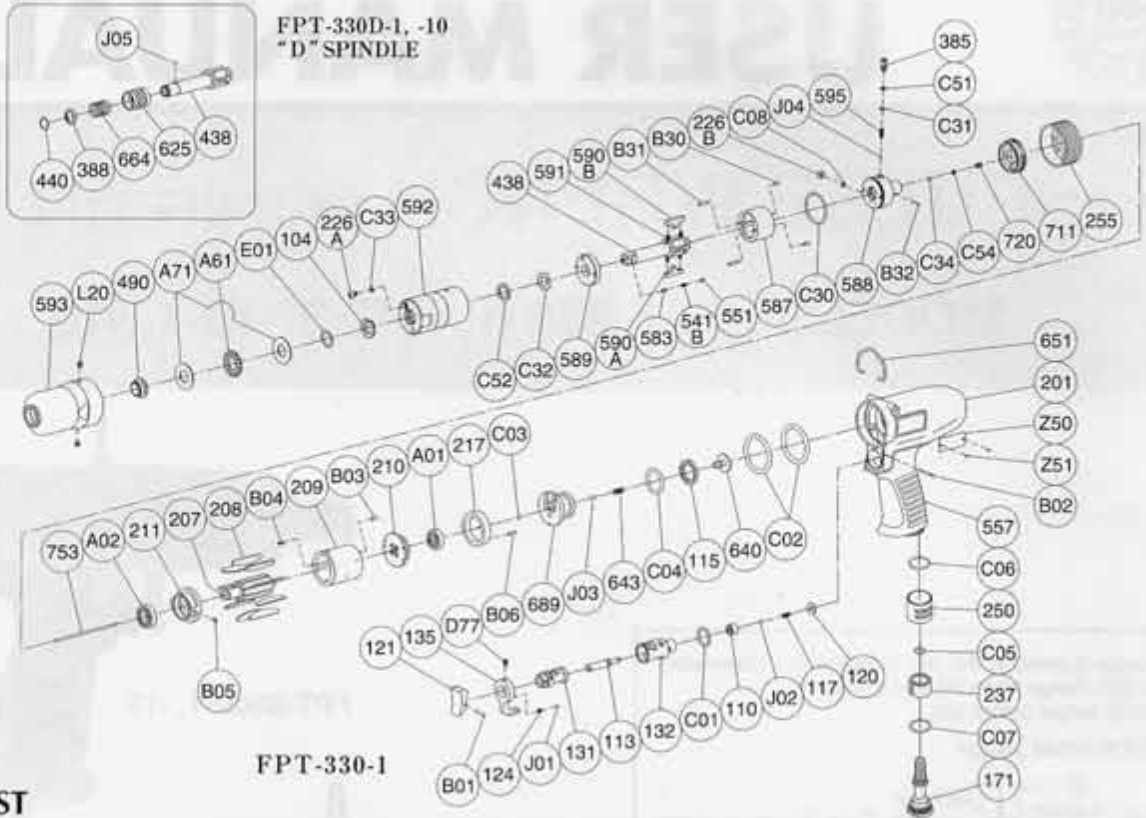
Tel : (06) 6972-2335

Fax : (06) 6972-2250



PARTS LIST MODEL: FPT-330-1, FPT-330D-1, -10

EXPLODED VIEW



PARTS LIST

Index No.	Parts No.	Parts Name	Qt.	Index No.	Parts No.	Parts Name	Qt.	Index No.	Parts No.	Parts Name	Qt.
FPT-330-1				J02	B-4U	Urethane Ball	1	C51	BR-P3T2	Back Up Ring	1
FPT-330D-1, -10				J03	B-4	Ball	1	C52	BR-112	Back Up Ring	1
Assy No.	W-349006-00	Housing Ass'y (PT)		Assy No.	W-330033-00	Front Case Ass'y		C54	BR-S2.5FT2	Back Up Ring	1
Assy No.	W-349006-01	Housing Ass'y (NPT)		490	W-331490-00	Spindle Bushing	1	J04	B-3	Ball	1
110	W-276110-01	Throttle Valve	1	593	W-330593-00	Front Case	1	207	W-347207-00	Rotor	1
113	W-276113-01	Throttle Valve Rod	1	(L20)	PL-1/32	Plug	2	208	W-339208-00	Rotor Blade	9
115	W-349115-00	Throttle Valve Sheet	1	FPT-330-1							
117	W-276117-00	Throttle Valve Spring	1	Assy No.	W-347021-01	Oil Cylinder Ass'y (BF)		209	W-349209-00	Cylinder	1
120	W-276120-01	Throttle Valve Cover	1	104	W-254104-00	Bushing	1	(B03)	SP-2.56	Spring Pin	1
121	W-254121-00	Throttle Valve Lever	1	226A	W-184226-00	Oil Plug	1	(B04)	SP-2.56	Spring Pin	1
124	W-254124-00	Knock Spring	1	226B	W-331226-00	Oil Plug	1	210	W-276210-01	Cylinder Upper Plate	1
131	W-276131-00	Reverse Valve	1	385	W-331385-00	Adjusting Screw	1	211	W-339211-00	Cylinder Lower Plate	1
132	W-276132-01	Reverse Valve Bushing	1	438	W-330438-01	Spindle (B)	1	(B05)	SP-2.55	Spring Pin	1
135	W-254135-00	Reverse Valve Lever	1	541B	W-252541-00	Button Retainer Spring (F)	1	255	W-254255-00	Motor Fastening Nut	1
171	W-302171-00	Inlet Joint (PT)	1	551	W-252551-00	Plug	1	557	W-302557-00	Protector	1
171	W-302171-01	Inlet Joint (NPT)	1	583	W-252583-00	Retainer Button (F)	1	651	W-225651-00	Hanger	1
201	W-349201-00	Housing	1	587	W-285587-00	Oil Cylinder	1	753	W-347753-00	Piston Rod	1
217	W-349217-00	Bearing Cover	1	588	W-343588-00	Oil Cylinder Upper Plate	1	A01	BB-EE2	Ball Bearing	1
237	W-310237-00	Muffler Pad	1	589	W-331589-00	Oil Cylinder Lower Plate	1	A02	BB-EE3	Ball Bearing	1
250	W-302250-00	Exhaust Cover	1	590A	W-285590-00	Spindle Blade	1	A61	NB-NTB1226	Thrust Needle Bearing	1
640	W-349640-00	Stop Valve	1	590B	W-285590-01	Spindle Blade	1	A71	TW-ASI226	Thrust Washer	2
643	W-349643-00	Stop Valve Spring	1	591	W-254591-00	Blade Spring	2	E01	WW-12	Wave Washer	1
689	W-349689-00	Valve Body	1	592	W-330592-00	Cylinder Case	1	Z50	NP-1137	Name Plate	1
B01	SP-212	Spring Pin	1	595	W-347595-00	Torque Adjusting Spring	1	Z51	NP-0X3.2	Screw Rivet	2
B02	GP-220GLC	Grooved Pin	1	711	W-331711-00	Cylinder Cover	1	It is common with FPT-330-1 excluding the undermentioned parts.			
B06	SP-210	Spring Pin	1	720	W-302720-00	Piston	1	FPT-330D-1, -10			
C01	O-S15	"O" Ring	1	B30	NR-2.56	Needle Roller	2	Assy No.	W-347021-02	Oil Cylinder Ass'y (D)	
C02	O-S34	"O" Ring	2	B31	NR-2.512	Needle Roller	2	438	W-330438-02	Spindle (D) (for FPT-330-1)	1
C03	O-S2	"O" Ring	1	B32	P-1.510.5	Pin	1	Assy No.	W-347021-03	Oil Cylinder Ass'y (D)	
C04	O-S22	"O" Ring	1	C08	O-S3 (H)	"O" Ring	1	438	W-330438-03	Spindle (D) (for FPT-330-10)	1
C05	O-S8	"O" Ring	1	C30	O-S27.5F (H)	"O" Ring	1	388	W-305388-00	Spring Holder	1
C06	O-S18	"O" Ring	1	C31	O-P3 (H)	"O" Ring	1	440	W-305440-00	Ring	1
C07	O-S18	"O" Ring	1	C32	O-KX12 (H)	"X" Ring	1	625	W-305625-00	Bit Cover	1
D77	SS-46D	Set Screw	1	C33	O-S3 (H)	"O" Ring	1	664	W-305664-00	Finder Spring	1
J01	B-3	Ball	1	C34	O-S14F	"O" Ring	1	J05	B-3	Ball	1
								Z50	NP-1138	Name Plate	1

□ Assy No. denotes no. of the assembled parts comprising of more than 1 pc. of parts.

The related parts are shown in the thick frame.

□ Index Nos. 209, 211, 438 and 593 are supplied together with parts shown in ().

□ Specify parts number and quantity in ordering.

■ Standard Accessories : F-701-1.....1.5mm Hex. Pin Wrench 1.

F-712.....2mm Hex. Pin Wrench 1.