

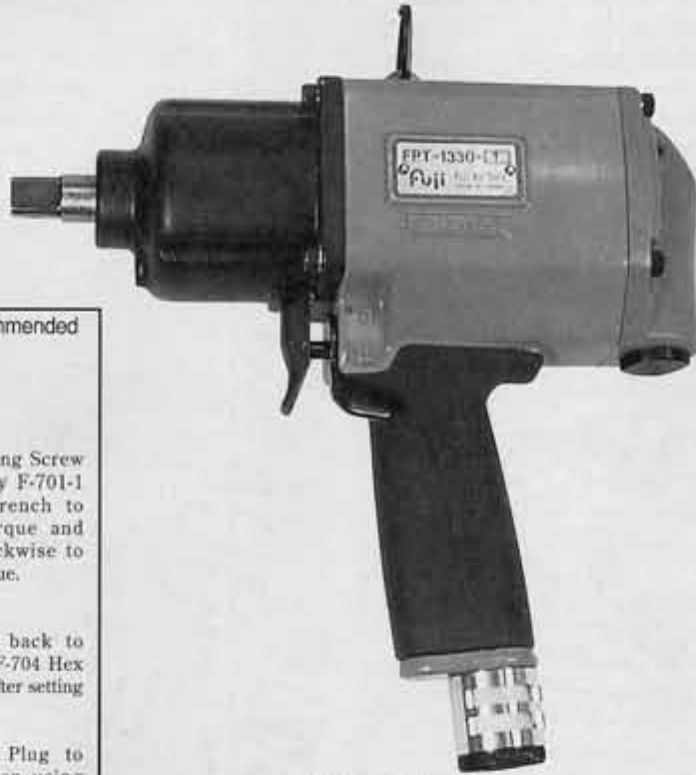


USER MANUAL

PULSE WRENCH SHUT-OFF TYPE

MODELS : FPT-1330-1, -1L

PAT.P



FPT-1330-1, -1L

■ Torque is preset at the min. torque of Recommended Torque Range when the tool is shipped. Adjust torque before use.

■ How to Adjust Torque

-
1. Unscrew Plug(1/16") on Housing by F-704 Hex Pin Wrench.
 2. Turn Spindle by hand until Adjusting Screw can be seen through Plug hole.
 3. Turn Adjusting Screw clockwise by F-701-1 Hex Pin Wrench to increase torque and counter clockwise to decrease torque.
 4. Screw Plug back to Housing by F-704 Hex Pin Wrench after setting torque.
 5. Always set Plug to Housing when using wrench.

SPECIFICATIONS

Model	Bolt Size	Recommended Torque Range		Rotational Frequency	Distance from Center to Side		Square Drive Size		Overall Length		Mass		Air Consumption (At Load)		Air Hose Size		
		mm	N·m		kgf·m	ft·lb	mm	in	mm	in	mm	in	kg	lb	m ³ /min	ft ³ /min	mm
FPT-1330-1	M12~M14	90~160	9.2~16.3	66.4~118.0	3600	35.5	1 13/32	12.7	1/2	228	8 63/64	3.23	7.1	0.74	26.1	9.5	3/8

- * Air Inlet Thread : PT or NPT 1/4"
- * Use all above model at 0.5~0.63MPa (5.0~6.3kgf/cm²) air pressure.
- * The performance figures are at 0.63MPa (6.3bar).

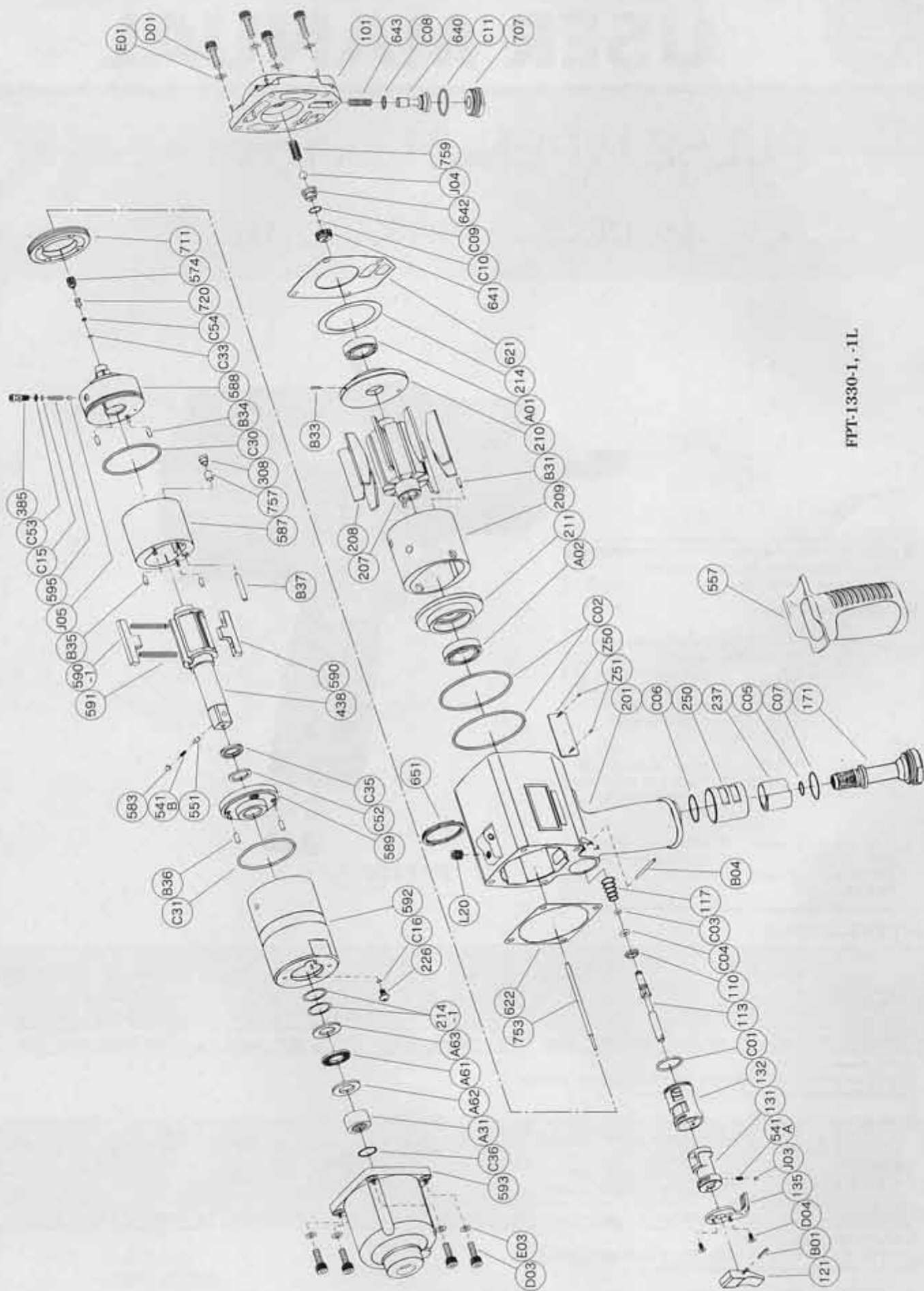
Model	Bolt Size	Recommended Torque Range		Rotational Frequency	Distance from Center to Side		Square Drive Size		Overall Length		Mass		Air Consumption (At Load)		Air Hose Size		
		mm	N·m		kgf·m	ft·lb	mm	in	mm	in	mm	in	kg	lb	m ³ /min	ft ³ /min	mm
FPT-1330-1L	M12	80~130	8.2~13.3	59.0~95.9	3100	35.5	1 13/32	12.7	1/2	228	8 63/64	3.23	7.1	0.48	16.9	9.5	3/8

- * Air Inlet Thread : PT or NPT 1/4"
- * Use all above model at 0.4~0.5MPa (4.0~5.0kgf/cm²) air pressure.
- * The performance figures are at 0.4MPa (4.0bar).



Refer to "The Instructions and Warning for Safety Use" enclosed in each tool box.

EXPLODED VIEW MODEL : FPT-1330-1, -1L



FPT-1330-1, -1L

PARTS LIST MODEL: FPT-1330-1, -1L

Index No.	Parts No.	Parts Name	Qt.	Index No.	Parts No.	Parts Name	Qt.
FPT-1330-1				438	W-283438-01	Spindle 	1
Assy No.	W-335001-00	Housing Cover Ass'y		(541B)	W-224541-00	Button Retainer Spring <F>	1
101	W-335101-00	Housing Cover	1	551	W-224551-00	Plug	1
640	W-335640-00	Stop Valve	1	583	W-224583-00	Retainer Button <F>	1
641	W-326641-00	Stop Valve Front Cover	1	574	W-326574-00	Bolt Holder	1
642	W-326642-00	Stop Valve Rear Cover	1	587	W-283587-00	Oil Cylinder	1
643	W-332643-00	Stop Valve Spring	1	588	W-335588-00	Oil Cylinder Upper Plate	1
707	W-333707-00	Valve Cover	1	589	W-335589-00	Oil Cylinder Lower Plate	1
759	W-326759-00	Return Spring	1	590	W-260590-00	Spindle Blade <A>	1
C08	O-P11	"O" Ring	1	590-1	W-260590-01	Spindle Blade 	1
C09	O-S9	"O" Ring	1	591	W-260591-00	Blade Spring	2
C10	O-S3	"O" Ring	1	592	W-335592-00	Cylinder Case	1
C11	O-S20	"O" Ring	1	595	W-335595-00	Torque Adjusting Spring	1
J04	B-7	Ball	1	711	W-186711-00	Cylinder Cover	1
FPT-1330-1L				720	W-300720-00	Piston	1
Assy No.	W-335001-01	Housing Cover Ass'y		757	W-224757-00	Needle	1
101	W-335101-00	Housing Cover	1	B34	NR-3.057	Needle Roller	2
640	W-335640-00	Stop Valve	1	B35	NR-3.057	Needle Roller	2
641	W-326641-00	Stop Valve Front Cover	1	B36	GP-36GCH	Grooved Pin	2
642	W-326642-00	Stop Valve Rear Cover	1	B37	NR-424.5	Needle Roller	1
643	W-326643-01	Stop Valve Spring	1	C15	O-P3 (H)	"O" Ring	1
707	W-333707-00	Valve Cover	1	C16	O-S3 (H)	"O" Ring	1
759	W-326759-00	Return Spring	1	C30	O-S46 (H)	"O" Ring	1
C08	O-P11	"O" Ring	1	C31	O-S44 (H)	"O" Ring	1
C09	O-S9	"O" Ring	1	C33	O-S2F (H)	"O" Ring	1
C10	O-S3	"O" Ring	1	C35	O-KX16 (H)	"X" Ring	1
C11	O-S20	"O" Ring	1	C52	BR-115	Back Up Ring	1
J04	B-7	Ball	1	C53	BR-P3T2	Back Up Ring	1
FPT-1330-1, -1L				C54	BR-S2.5FT2	Back Up Ring	1
Assy's No.	W-335006-06	Housing Ass'y <PT>		J05	B-3	Ball	1
Assy's No.	W-335006-07	Housing Ass'y <NPT>		Assy No.	W-335033-00	Front Case Ass'y	
110	W-283110-00	Throttle Valve	1	593	W-335593-00	Front Case	1
113	W-283113-00	Throttle Valve Rod	1	A31	NB-RNA4901	Needle Bearing	1
117	D-001117-00	Throttle Valve Spring	1	C36	O-1016	"O" Ring	1
121	W-283121-00	Throttle Valve Lever	1	207	W-335207-00	Rotor	1
131	W-283131-00	Reverse Valve	1	208	W-335208-00	Rotor Blade	9
132	W-283132-00	Reverse Valve Bushing	1	209	W-283209-00	Cylinder	1
135	W-283135-00	Reverse Valve Lever	1	(B31)	SP-310	Spring Pin	1
171	W-283171-00	Inlet Joint <PT>	1	210	W-283210-00	Cylinder Upper Plate	1
	W-283171-01	Inlet Joint <NPT>	1	(B33)	SP-26	Spring Pin	1
201	W-335201-00	Housing	1	211	W-335211-00	Cylinder Lower Plate	1
237	W-282237-00	Muffler Pad	1	214	W-125214-00	Adjusting Washer	1
250	W-283250-01	Exhaust Cover	1	214-1	W-332214-00	Adjusting Washer	2
541A	W-252541-00	Button Retainer Spring <F>	1	557	W-283557-00	Protector	1
B01	SP-212	Spring Pin	1	621	W-320621-00	Packing <A>	1
B04	GP-226GLC	Grooved Pin	1	622	W-283622-00	Packing 	1
C01	O-S20	"O" Ring	1	651	W-181651-00	Horizontal Hanger	1
C02	O-S60	"O" Ring	2	753	W-335753-00	Piston Rod	1
C03	O-S4	"O" Ring	1	A01	BB-6902	Ball Bearing	1
C04	O-P5	"O" Ring	1	A02	BB-6804	Ball Bearing	1
C05	O-S12	"O" Ring	1	A61	NB-NTB1629	Thrust Needle Bearing	1
C06	O-S22	"O" Ring	1	A62	TW-AS1629	Thrust Washer	1
C07	O-S22	"O" Ring	1	A63	TW-AS1629	Thrust Washer	1
D04	CS-36S	Cap Screw	2	D01	CS-516	Cap Screw	4
J03	B-3	Ball	1	D03	CS-516	Cap Screw	4
L20	PL-1/16	Plug	1	E01	PW-5K	Plain Washer	4
Assy No.	W-335021-01	Oil Cylinder Ass'y <BF>		E03	PW-5K	Plain Washer	4
226	W-184226-00	Oil Plug	1	Z50	NP-2063	Name Plate	1
308	W-335308-00	Spacer	1	Z51	NPN-0X3.2	Screw Rivet	2
385	W-335385-00	Adjusting Screw	1				

Assy No. denotes no. of the assembled parts comprising of more than 1 pc. of parts.
 Specify parts number and quantity in ordering.

The related parts are shown in the thick frame.
 ■ Standard Accessory : F-701-1 · 1.5mm Hex. Pin Wrench 1.
 F-704 ····· 4mm Hex. Pin Wrench 1.

Index Nos. 209, 210 and 438 are supplied together with parts shown in ().

FUJI AIR TOOLS CO., LTD.

2-1-14 Kamiji, Higashinari-ku, Osaka, 537-0003 Japan

Tel : (06) 6972-2335

Fax : (06) 6972-2250

