



USER MANUAL

TORQUE CONTROL PULSE WRENCH

MODELS : FPT-1110-1, -1L

PAT. P



FPT-1110-1

SPECIFICATIONS

Model	Capacity Bolt Size (Guidance)		Torque Range			Free Speed min ⁻¹	Square Drive Size		Side to Center		Overall Length		Mass		Air Consumption (Under Load)		Air Inlet Thread Size
	mm	in	N·m	kgf·m	ft·lb		mm	in	mm	in	mm	in	kg	lb	Nm ² /min	Nit ² /min	
FPT-1110-1	10~12	3/8~15/32	75~130	7.7~13.3	56.3~97.5	4,800	12.7	1/2	32.7	1 9/32	216	8 1/2	2.6	5.7	0.60	21.0	PT or NPT 1/4

*All above tools are required to be used at air pressure between 0.5~0.63 MPa (5.0~6.3 bar). The performance figures are at 0.63 MPa (6.3 bar).
*Air Hose Size: 9.5mm (3/8")

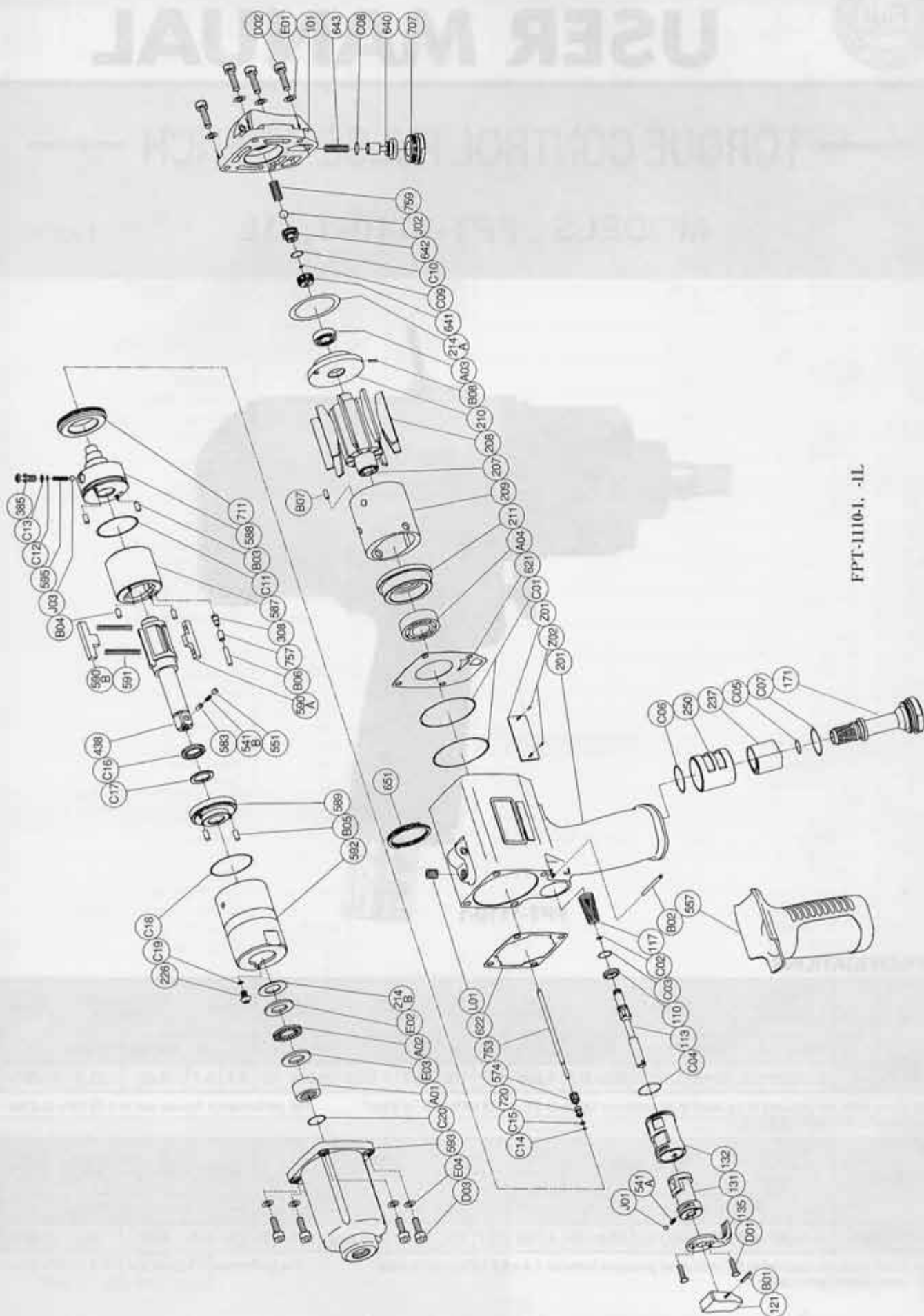
Model	Capacity Bolt Size (Guidance)		Torque Range			Free Speed min ⁻¹	Square Drive Size		Side to Center		Overall Length		Mass		Air Consumption (Under Load)		Air Inlet Thread Size
	mm	in	N·m	kgf·m	ft·lb		mm	in	mm	in	mm	in	kg	lb	Nm ² /min	Nit ² /min	
FPT-1110-1L	10~12	3/8~15/32	65~100	6.6~10.2	48.8~75	4,100	12.7	1/2	32.7	1 9/32	216	8 1/2	2.6	5.7	0.37	13.0	PT or NPT 1/4

*All above tools are required to be used at air pressure between 0.4~0.5 MPa (4.0~5.0 bar). The performance figures are at 0.4 MPa (4.0 bar).
*Air Hose Size: 9.5mm (3/8")

Refer to "The Instructions and Warning for Safety Use" enclosed in each tool box.



EXPLODED VIEW MODEL: FPT-1110-1, -1L



FPT-1110-1, -1L

PARTS LIST MODEL: FPT-1110-1, -1L

Index No.	Parts No.	Parts Name	Qt.
FPT-1110-1, -1L			
CP No.	W-334006-00	Housing CP	
110	W-283110-00	Throttle Valve	1
113	W-282113-01	Throttle Valve Rod	1
117	D-001117-00	Throttle Valve Spring	1
121	W-254121-00	Throttle Valve Lever	1
131	W-282131-01	Reverse Valve	1
132	W-282132-01	Reverse Valve Bushing	1
135	W-283135-00	Reverse Valve Lever	1
171	W-283171-00	Inlet Joint (PT)	1
171	W-283171-01	Inlet Joint (NPT)	1
201	W-334201-00	Housing	1
237	W-282237-00	Muffler Pad	1
250	W-283250-01	Exhaust Cover	1
541A	W-252541-00	Button Retainer Spring (F)	1
B01	SP-212	Spring Pin	1
B02	GP-226GLC	Grooved Pin	1
C01	O-S53	"O" Ring	2
C02	O-S4	"O" Ring	1
C03	O-P5	"O" Ring	1
C04	O-S17	"O" Ring	1
C05	O-S12	"O" Ring	1
C06	O-S22	"O" Ring	1
C07	O-S22	"O" Ring	1
D01	CS-36S	Cap Screw	2
J01	B-3	Ball	1
CP No.	W-334001-00	Housing Cover CP	
101	W-334101-00	Housing Cover	1
640	W-333640-00	Stop Valve	1
641	W-326641-00	Stop Valve Front Cover	1
642	W-326642-00	Stop Valve Rear Cover	1
643	W-332643-00	Stop Valve Spring (Black)	1
707	W-333707-00	Valve Cover	1
759	W-326759-00	Return Spring	1
C08	O-P11	"O" Ring	1
C09	O-S3	"O" Ring	1
C10	O-S9	"O" Ring	1
D02	CS-516	Cap Screw	4
E01	PW-5K	Plain Washer	4
J02	B-7	Ball	1
CP No.	W-334021-00	Oil Cylinder CP (BF)	
226	W-184226-00	Oil Plug	1
308	W-332308-00	Spacer	1
385	W-333385-00	Adjusting Screw	1
438	W-334438-01	Spindle (B)	1
541B	W-224541-00	Button Retainer Spring (F)	1
551	W-224551-00	Plug	1
583	W-224583-00	Retainer Button (F)	1
574	W-332574-00	Bolt Holder	1
587	W-282587-00	Oil Cylinder	1
588	W-334588-00	Oil Cylinder Upper Plate	1
589	W-334589-00	Oil Cylinder Lower Plate	1
590A	W-258590-00	Spindle Blade (A)	1
590B	W-258590-01	Spindle Blade (B)	1
591	W-258591-00	Blade Spring	2
592	W-334592-00	Cylinder Case	1
595	W-333595-00	Torque Adjusting Spring	1
711	W-223711-00	Cylinder Cover	1
720	W-300720-00	Piston	1

Index No.	Parts No.	Parts Name	Qt.
757	W-282757-00	Needle	1
B03	NR-3.057	Needle Roller	2
B04	NR-3.057	Needle Roller	2
B05	GP-36GCH	Grooved Pin	2
B06	NR-318.8	Needle Roller	1
C11	O-S42(H)	"O" Ring	1
C12	O-P3(H)	"O" Ring	1
C13	BR-P3	Back Up Ring	1
C14	O-S2F(H)	"O" Ring	1
C15	BR-S2.5FT2	Back Up Ring	1
C16	O-KX16(H)	"X" Ring	1
C17	BR-115	Back Up Ring	1
C18	O-S40(H)	"O" Ring	1
C19	O-S3(H)	"O" Ring	1
J03	B-3	Ball	1
CP No.	W-334033-00	Front Case CP	
593	W-334593-00	Front Case	1
A01	NB-RNA4901	Needle Bearing	1
A02	NB-NTB1629	Thrust Ball Bearing	1
C20	O-1016	"O" Ring	1
D03	CS-516	Cap Screw	4
E02	TW-AS1629	Governor Valve Cover	1
E03	TW-AS1629	Governor Valve Cover	1
E04	PW-5K	Plain Washer	4
L01	PL-1/16	Plug	1
207	W-334207-00	Rotor	1
208	W-282208-00	Rotor Blade	9
209	W-282209-00	Cylinder	1
(B07)	SP-2.58	Spring Pin	1
210	W-282210-00	Cylinder Upper Plate	1
(B08)	SP-26	Spring Pin	1
211	W-334211-00	Cylinder Lower Plate	1
214A	W-162214-00	Adjusting Washer (T=0.03)	1
214B	W-332214-01	Adjusting Washer	2
557	W-282557-01	Protector	1
621	W-315621-00	Packing (A)	1
622	W-223622-00	Packing (B)	1
651	W-181651-00	Horizontal Hanger	1
753	W-334753-00	Piston Rod	1
A03	BB-6901	Ball Bearing	1
A04	BB-6903	Ball Bearing	1
Z01	NP-2062	Name Plate	1
Z02	NPN-0x3.2	Screw Rivet	2
FPT-1110-1L			
CP No.	W-334001-01	Housing Cover CP	
101	W-334101-00	Housing Cover	1
640	W-333640-00	Stop Valve	1
641	W-326641-00	Stop Valve Front Cover	1
642	W-326642-00	Stop Valve Rear Cover	1
643	W-326643-01	Stop Valve Spring (Silver)	1
707	W-333707-00	Valve Cover	1
759	W-326759-00	Return Spring	1
C08	O-P11	"O" Ring	1
C09	O-S3	"O" Ring	1
C10	O-S9	"O" Ring	1
D02	CS-516	Cap Screw	4
E01	PW-5K	Plain Washer	4
J02	B-7	Ball	1

CP No. denotes the assembled parts comprising of more than 1 pc. of parts. The related parts are shown in the thick frame.

#209, 210 and 438 are supplied together with parts shown in ().

Specify parts number and quantity in ordering.

■ Standard Accessories : F-701-1.....1.5mm Hex. Pin Wrench 1.

F-704.....4 mm Hex. Pin Wrench 1.

FUJI AIR TOOLS CO., LTD.

2-1-14 Kamiji, Higashinariku, Osaka 537-0003, Japan

Tel : (06) 6972-2335

Fax : (06) 6972-2250

