



# USER MANUAL

## OPEN-END WRENCHES

MODELS : FOW-10-1, -2

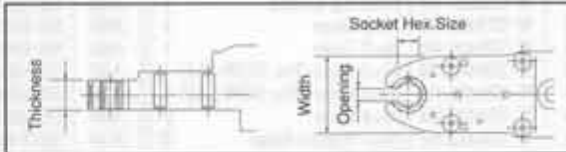


FOW-10-1



FOW-10-2

### HEAD SIZE



### SOCKET SIZE

Model	Socket Hexagon Size (mm)	
	Standard	Other Sizes
FOW-10-1	10	8, 9, 3/8"
FOW-10-2	14	10, 11, 12, 13, 1/2"

\*Specify the socket size in ordering the tool.

### SPECIFICATIONS

Model	Stall Torque (about)			Free Speed (about)	Head Size						Socket Hexagon Size (Standard)		Overall Length (about)		Mass (about)		Air Consumption Under Load (about)		Air Inlet Thread Size
	N·m	kgf·m	ft·lb		Thickness		Opening		Width		mm	in	mm	in	kg	lb	Nm <sup>2</sup> /min	NI <sup>2</sup> /min	
					mm	in	mm	in	mm	in									
FOW-10-1	13.6	1.4	10.2	410	14	35/64	6	15/64	36	1 27/64	10	25/64	294	11 37/64	1.5	3.3	0.53	18.7	1/4"
FOW-10-2	18.5	1.9	13.9	300	14	35/64	9	23/64	40	1 37/64	14	64/35	306	12 3/64	1.6	3.5	0.53	18.7	1/4"

Air Hose Size: 9.5mm (3/8")

The performance figures are at 0.63MPa (6.3bar).

⚠ Refer to "The Instructions and Warning for Safety Use" enclosed in each tool box.

FUJI AIR TOOLS CO., LTD.

2-1-14 Kamiji, Higashinariku, Osaka, 537-0003 Japan

Tel : (06) 6972-2335

Fax : (06) 6972-2250

BOLT & NUT SETTERS  
SCREW DRIVERS

ABRASIVE TOOLS

DRILLS · TAPPERS

PERCUSSION TOOLS

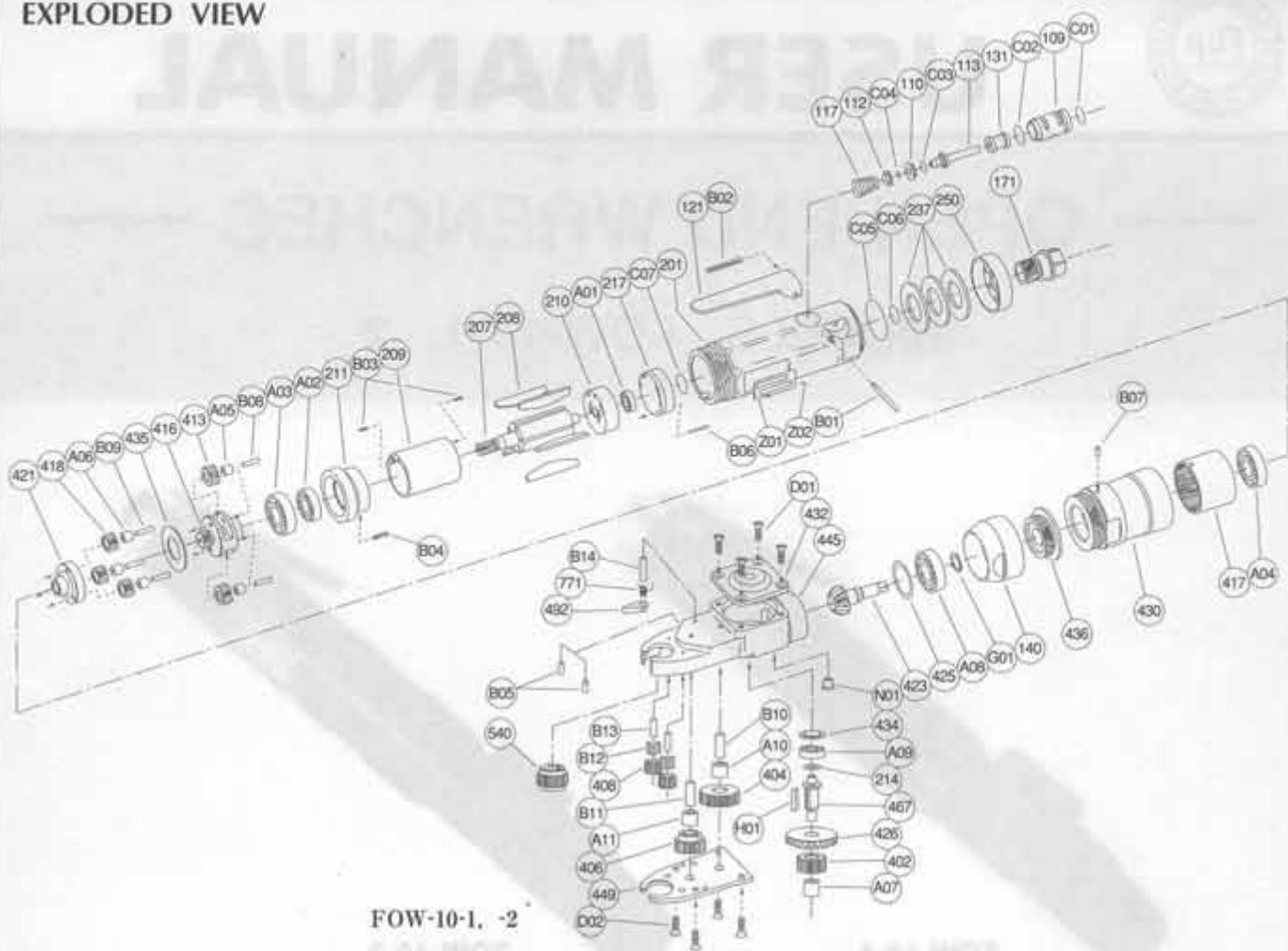
AIR MOTORS & OTHERS

OTHER PRODUCTS



# PARTS LIST MODEL: FOW-10-1, -2

## EXPLODED VIEW



FOW-10-1, -2

## PARTS LIST

Index No.	Parts No.	Parts Name	Qt.	Index No.	Parts No.	Parts Name	Qt.	Index No.	Parts No.	Parts Name	Qt.
<b>FOW-10-1, -2</b>											
CP No.	W-278006-01	Housing CP		217	W-278217-01	Bearing Cover	1	A04	BB-6001	Ball Bearing	1
109	W-278109-01	Throttle Valve Bushing	1	402	W-278402-01	No.1 Gear	1	A05	NB-HK0306T2	Needle Bearing	2
110	W-278110-00	Throttle Valve	1	404	W-278404-01	No.2 Gear	1	A06	NB-HK0306T2	Needle Bearing	3
112	W-278112-01	Throttle Valve Collar	1	406	W-278406-03	No.3 Gear (For FOW-10-1)	1	A07	NB-BK0609T2	Needle Bearing	1
113	W-278113-01	Throttle Valve Rod	1	406	W-278406-04	No.3 Gear (For FOW-10-2)	1	A08	BB-6000	Ball Bearing	1
117	W-278117-00	Throttle Valve Spring	1	408	W-278408-03	No.4 Gear	2	A09	BB-606	Ball Bearing	1
121	M-073121-00	Throttle Valve Lever	1	413	W-278413-01	No.1 Planet Gear	2	A10	NB-F-68TORR	Needle Bearing	1
131	W-278131-01	Reverse Valve	1	416	W-278416-01	No.1 Planet Gear Frame	1	A11	NB-F-68TORR	Needle Bearing	1
171	W-299171-00	Inlet Joint (PT)	1	417	W-278417-00	No.1 Internal Gear	1	B06	SP-1614	Bracket	1
171	W-299171-01	Inlet Joint (NPT)	1	418	W-278418-01	No.2 Planet Gear	3	B07	GP-36GCH	Grooved Pin	1
201	W-278201-01	Housing	1	421	W-278421-01	No.2 Planet Gear Frame	1	B08	NR-312	Needle Roller	2
237	W-299237-00	Muffler Pad	3	423	W-278423-01	Bevel Pinion	1	B09	NR-312.8	Needle Roller	3
250	W-299250-00	Exhaust Cover	1	425	W-278425-00	Bevel Pinion Washer (T=0.1)	1	B10	NR-615.5	Needle Roller	1
B01	GP-2526GLC	Grooved Pin	1	425	W-278425-01	Bevel Pinion Washer (T=0.2)	1	B11	NR-615.5	Needle Roller	1
B02	SP-325	Spring Pin	1	426	W-278426-01	Bevel Gear	1	B12	NR-17.8	Needle Roller	30
C01	O-S125	O Ring	1	430	W-278430-01	No.1 Gear Case	1	B13	NR-411.5	Needle Roller	2
C02	O-S14	O Ring	1	432	W-278432-01	Gear Case Cover	1	B14	NR-415.5	Needle Roller	1
C03	O-S9	O Ring	1	434	A-099434-00	Bearing Washer	1	C07	O-S14	O Ring	1
C04	O-S5	O Ring	1	435	W-278435-00	Thrust Washer	1	D01	CS-48S	Cap Screw	4
C05	O-S28F	O Ring	1	436	W-278436-00	Bearing Holder	1	D02	CS-48S	Cap Screw (For FOW-10-1)	4
C06	O-S125	O Ring	1	445	W-278445-03	Spindle Case (For FOW-10-1)	1	D02	CS-48S	Cap Screw (For FOW-10-2)	6
Z01	NP-1096	Name Plate	1	445	W-278445-04	Spindle Case (For FOW-10-2)	1	G01	SR-SA10	Snap Ring	1
Z02	NPN-0x3.2	Screw Rivet	2	(B05)	GP-38GCH	Grooved Pin	2	H01	K-3315	Key	1
140	W-278140-00	Cup Nut	1	449	W-278449-03	Spindle Case Cover (For FOW-10-1)	1	N01	GN-1/4	Grease Nipple	1
207	W-278207-01	Rotor	1	449	W-278449-04	Spindle Case Cover (For FOW-10-2)	1	<b>OPTION</b>			
208	W-100208-00	Rotor Blade	5	467	W-278467-01	No.1 Gear Spindle	1	<b>FOW-10-1</b>			
209	W-278209-00	Cylinder	1	492	W-278492-02	Stopper	1	540A	W-278540-30	Socket (8 Hex)	1
(B03)	SP-1.66	Spring Pin	2	540	W-278540-32	Socket (10Hex) (For FOW-10-1)	1	540B	W-278540-31	Socket (9 Hex)	1
210	W-278210-00	Cylinder Upper Plate	1	540	W-278540-44	Socket (11Hex) (For FOW-10-2)	1	540C	W-278540-33	Socket (3/8 Hex)	1
211	W-278211-01	Cylinder Lower Plate	1	771	W-278771-02	Spring	1	<b>FOW-10-2</b>			
(B04)	SP-35	Spring Pin	1	A01	BB-606	Ball Bearing	1	540A	W-278540-40	Socket (10 Hex)	1
214	G-001214-00	Adjusting Washer (T=0.1)	1	A02	BB-609	Ball Bearing	1	540B	W-278540-41	Socket (11 Hex)	1
				A03	BB-6902	Ball Bearing	1	540C	W-278540-42	Socket (12 Hex)	1
								540D	W-278540-43	Socket (13 Hex)	1
								540E	W-278540-45	Socket (1/2 Hex)	1

□ CP No. denotes the assembled parts comprising of more than 1 pc. of parts.  
The related parts are shown in the thick frame.

□ #209, 211 and 445 are supplied together with parts shown in ( ).  
□ Specify parts number and quantity in ordering.