



USER MANUAL

— TORQUE CONTROL OIL PULSE WRENCHES —

MODEL : FLT-9-1



FLT-9-1

SPECIFICATIONS

Model	Bolt Size	Recommended Torque Range			Rotational Frequency	Square Drive Size	Overall Length (without socket)			Mass (without socket)		Air Consumption (At Load)		Air Inlet Thread Size	Air Hose Size	
		N·m	kgf·m	ft·lb			min ⁻¹	mm	mm	in	kg	lb	m ³ /min		ft ³ /min	in
FLT-9-1	M10	50~85	5.1~8.6	36.8~62.6	5,300	12.7	209	8 15/64	1.60	3.5	0.68	24.0	PT or NPT 1/4	9.5	3/8	

The performance figures are at 0.63MPa (6.3bar).

⚠ Refer to "The Instructions and Warning for Safety Use" enclosed in each tool box.

FUJI AIR TOOLS CO., LTD.

2-1-14, Kamiji, Higashinari-ku, Osaka 537-0003, Japan

Tel : 81-6-6972-2335

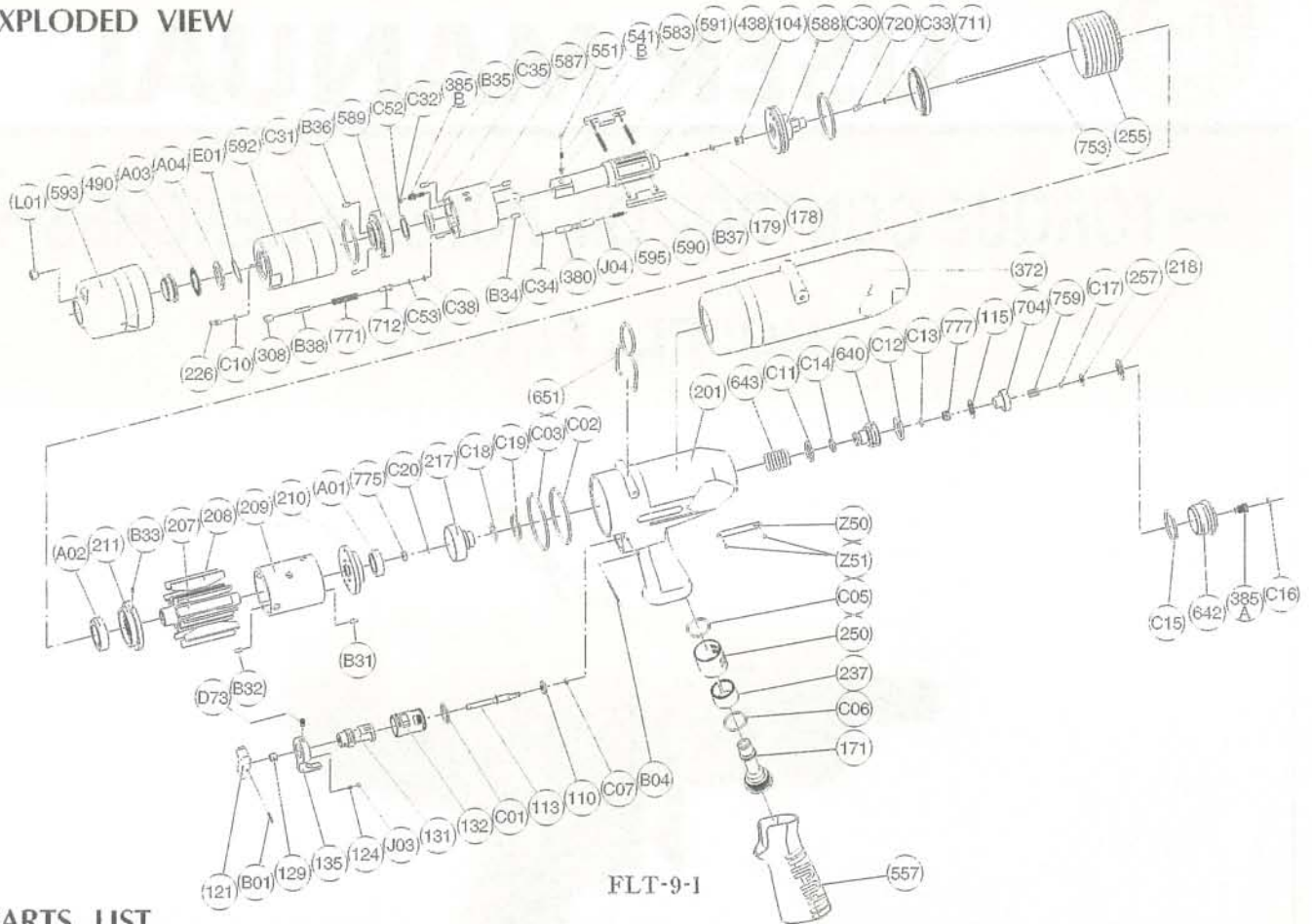
Fax : 81-6-6972-2250



SCREW DRIVERS | AIR-HASIVE TOOLS | DRILLS • TAPPERS | PERCUSSION TOOLS | AIR MOTORS & OTHERS | OTHER PRODUCTS

PARTS LIST MODEL: FLT-9-1

EXPLODED VIEW



PARTS LIST

Index No.	Parts No.	Parts Name	Qt.	Index No.	Parts No.	Parts Name	Qt.	Index No.	Parts No.	Parts Name	Qt.
FLT-9-1											
Ass'y No.	W-373006-00	Housing Ass'y		438	W-373438-01	Spindle	1	217	W-372217-00	Bearing Cover	1
110	W-372110-00	Throttle Valve	1	587	W-373587-00	Oil Cylinder	1	218	W-371218-00	Packing	1
113	W-372113-00	Throttle Valve Rod	1	588	W-373588-00	Oil Cylinder Upper Plate	1	255	W-373255-00	Motor Fastening Nut	1
121	W-254121-00	Throttle Valve Lever	1	589	W-373589-00	Oil Cylinder Lower Plate	1	257	W-371257-00	Washer	1
124	W-254124-00	Knock Spring	1	(B36)	GP-36G	Grooved Pin	2	372	W-373372-00	Plastic Cover	1
129	W-372129-00	Throttle Valve Rod Bushing	1	590	W-373590-00	Spindle Blade	2	385A	W-362385-01	Adjusting Screw	1
131	W-372131-00	Reverse Valve	1	(B37)	SP-25	Spring Pin	4	541B	W-224541-00	Button Retainer Spring	1
132	W-372132-00	Reverse Valve Bushing	1	591	W-373591-00	Blade Spring	2	551	W-224551-00	Plug	1
135	W-254135-00	Reverse Valve Lever	1	592	W-373592-00	Cylinder Case	1	557	W-371557-00	Protector	1
171	W-371171-00	Inlet Joint	1	595	W-373595-00	Torque Adjusting Spring	1	583	W-224583-00	Retainer Button (F)	1
201	W-373201-00	Housing	1	711	W-373711-00	Cylinder Cover	1	640	W-372640-00	Stop Valve	1
237	W-302237-00	Muffler Pad	1	712	W-373712-00	Damper	1	642	W-372642-00	Stop Valve Rear Cover	1
250	W-302250-00	Exhaust Cover	1	720	W-371720-00	Piston	1	643	W-372643-00	Stop Valve Spring	1
B01	SP-212	Spring Pin	1	771	W-373771-00	Spring	1	651	W-371651-00	Hanger (Horizontal)	1
B04	GP-224GLC	Grooved Pin	1	B34	NR-3.057	Needle Roller	2	704	W-372704-00	Valve	1
C01	O-S15	"O" Ring	1	B35	NR-3.057	Needle Roller	2	753	W-373753-00	Piston Rod	1
C02	O-S44	"O" Ring	1	B38	NR-314	Needle Roller	1	759	W-371759-00	Return Spring	1
C03	O-S44	"O" Ring	1	C10	O-S25F (H)	"O" Ring (HNBR80)	1	775	W-371775-00	Seal Box	1
C05	O-S18	"O" Ring	1	C30	O-S36 (H)	"O" Ring (HNBR80)	1	777	W-372777-00	Collar	1
C06	O-S18	"O" Ring	1	C31	O-S34 (H)	"O" Ring (HNBR80)	1	A01	BB-6900	Ball Bearing	1
C07	O-568-0004	"O" Ring	1	C32	O-S3 (H)	"O" Ring (HNBR80)	1	A02	BB-6902ZZ	Ball Bearing	1
D73	SS-46D	Set Screw (Dog Point)	1	C33	O-S1.4F (H)	"O" Ring (HNBR80)	1	A03	NB-NTB1624NE	Thrust Needle Bearing	1
J03	B-3	Ball	1	C34	O-S2.5F (H)	"O" Ring (HNBR80)	1	A04	TW-AS1624E	Thrust Washer	1
Ass'y No.	W-373033-00	Front Case Ass'y		C35	O-KX16 (H)	"X" Ring (HNBR80)	1	C11	O-1014	"O" Ring	1
490	W-373490-00	Spindle Bushing	1	C38	O-S2.5F (H)	"O" Ring	1	C12	O-P16	"O" Ring	1
593	W-373593-00	Front Case	1	C52	BR-115	Back Up Ring	1	C13	O-P3	"O" Ring	1
L01	PL-1.16	Plug	1	C53	BR S3FT2	Back Up Ring	1	C14	O-U8	"U" Packing	1
Ass'y No.	W-373021-01	Oil Cylinder Ass'y		J04	B-3	Ball	1	C15	O-S24	"O" Ring	1
104	W-373104-00	Bushing	1	115	W-362115-01	Throttle Valve Sheet	1	C16	O-S5	"O" Ring	1
178	W-362178-00	Plunger	1	207	W-373207-00	Rotor	1	C17	O-S2	"O" Ring	1
179	W-362179-00	Plunger Spring	1	208	W-373208-00	Rotor Blade	9	C18	O-S14	"O" Ring	1
226	W-371226-00	Oil Plug	1	209	W-373209-00	Cylinder	1	C19	O-S20	"O" Ring	1
308	W-373308-00	Spacer	1	(B31)	SP-2.56	Spring Pin	1	C20	O-S3	"O" Ring	1
380	W-373380-00	Adjusting Spindle	1	(B32)	SP-2.56	Spring Pin	1	E01	WW-16	Wave Washer	2
385B	W-373385-00	Adjusting Screw	1	210	W-373210-00	Cylinder Upper Plate	1	Z50	NP-7004	Name Plate	1
				211	W-373211-00	Cylinder Lower Plate	1	Z51	NPN-0X3.2	Screw Rivet	2
				(B33)	SP-1.56	Spring Pin	1				

- Ass'y No. denotes no. of the assembled parts comprising of more than 1 pc. of parts. The related parts are shown in the thick frame.
- #209, 211, 589 and 590 are supplied together with parts shown in ().
- Specify parts number and quantity in ordering.

- Standard Accessories :
 - F-701-1.....1.5mm Hex. Pin Wrench 1.
 - F-704.....4mm Hex. Pin Wrench 1.
 - Standard Accessory for NPT only :
 - IB-202N00.....Inlet Bushing 1.