



# USER MANUAL

## F1-SHUT WRENCH

MODELS : FET-777-1



FET-777-1



FET-777-1 BACK  
LCD DISPLAY

### SPECIFICATIONS

Model	Capacity Screw Size (Guidance)		Adjustable Torque Range			Free Speed	Side to Center		Square Drive Size		Overall Length		Mass		Air Consumption (Under Load)		Air Inlet Thread Size		Air Hose Size		
	mm	in	N·m	kgf·m	ft·lb	min <sup>-1</sup>	mm	in	mm	in	mm	in	kg	lb	Nm <sup>3</sup> /min	NI <sup>3</sup> /min	in	mm	in	mm	in
FET-777-1	8	5/16	44-76	4.5-7.8	33-56	6,300	26	1/2	9.5	3/8	201	7 <sup>59</sup> /64	1.9	4.2	0.5	17.7	PT or NPT 1/4	9.5	3/8		

The performance figures are at 0.63 MPa (6.3 bar).

※ This model is equipped with the LCD operation panel for programming on the head cover of the tool.

※ This model is required to be used with the related peripheral equipment shown in the FET system list.

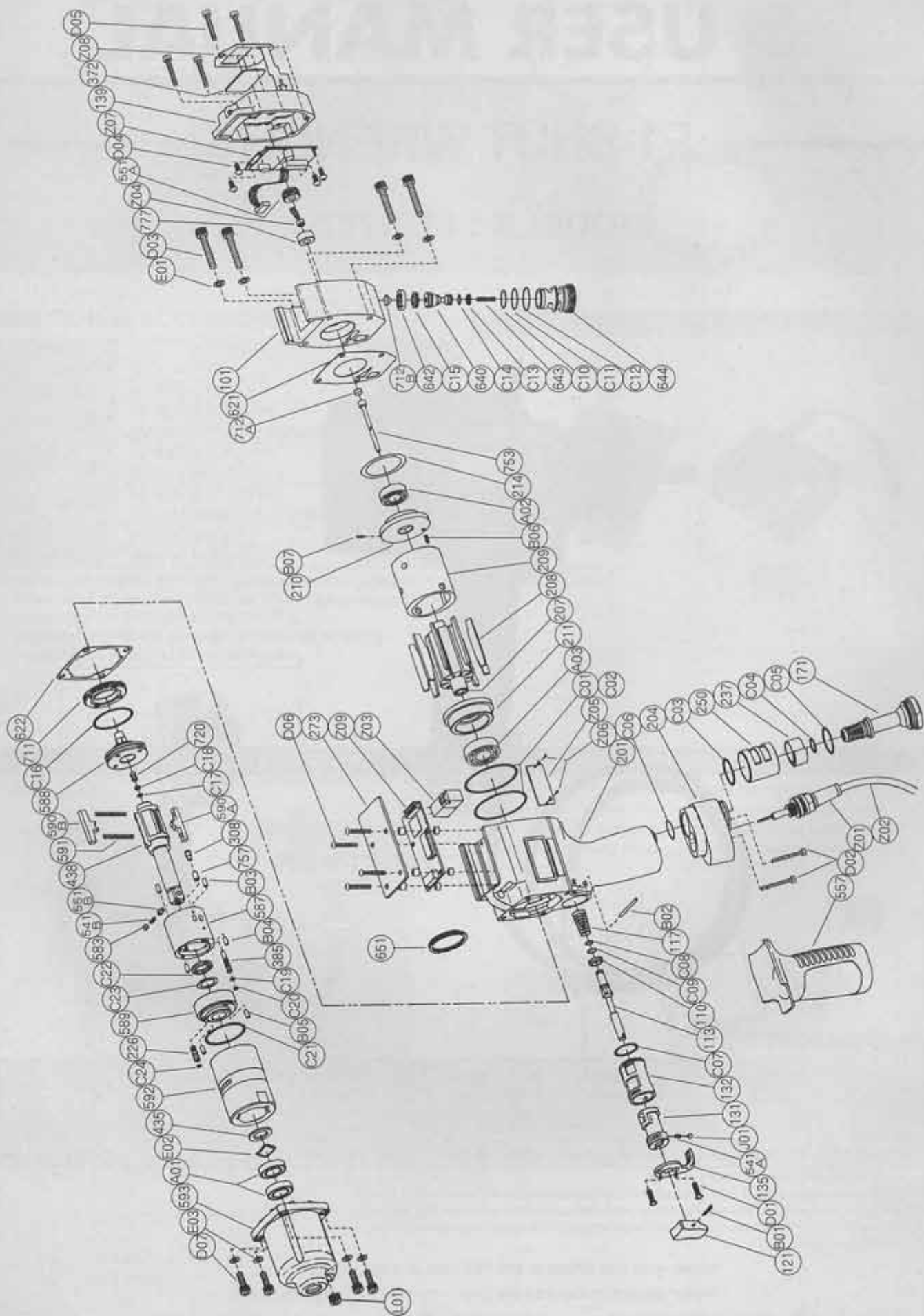
Please contact your nearest sales company for the information of the optional equipment and the FV-NET communication system.

**\*Never give any shock to the FET tool and the interface.**

**\*Never place the tool and the interface near the magnetic field.**



Refer to "The Instructions and Warning for Safety Use" enclosed in each tool box.



# PARTS LIST MODEL: FET-777-1

Index No.	Parts No.	Parts Name	Qt.	Index No.	Parts No.	Parts Name	Qt.	Index No.	Parts No.	Parts Name	Qt.
<b>FET-777-1</b>				643	W-300643-00	Stop Valve Spring	1	C20	BR-S2.5FT2	Back Up Ring	1
CP No.	W-300006-00	Housing C.P		644	W-300644-00	Stop Valve Bushing	1	C21	O-1530-24(H)	"O" Ring	1
121	W-254121-00	Trigger	1	712A	W-300712-00	Damper	1	C22	O-KX12(H)	"X" Ring	1
131	W-282131-01	Reverse Valve	1	753	W-300753-00	Piston Rod	1	C23	BR-112	Back Up Ring	1
135	W-281135-00	Reverse Valve Lever	1	777	W-300777-00	Collar	1	C24	O-S2.5F(H)	"O" Ring	1
171	W-282171-00	Inlet Joint <PT>	1	C10	O-S12	"O" Ring	1	CP	W-300033-00	Front Case C.P	
171	W-282171-01	Inlet Joint <NPT>	1	C11	O-S14	"O" Ring	1	593	W-300593-00	Front Case	1
237	W-282237-00	Muffler Pad	1	C12	O-S16	"O" Ring	1	A01	BB-6801ZZ	Ball Bearing	2
250	W-282250-01	Exhaust Cover	1	C13	O-X008	"X" Ring	1	L01	PL-1/8	Plug	1
541A	W-252541-00	Button Retainer Spring <F>	1	C14	O-P5	"O" Ring	1	139	W-300139-00	Housing Cover <B>	1
B01	SP-212	Spring Pin	1	C15	O-X012A	"X" Ring	1	207	W-300207-00	Rotor	1
B02	GP-226GLC	Grooved Pin	1	D03	CS-435	Cap Screw	4	208	W-279208-00	Rotor Blade	9
C01	O-S42	"O" Ring	1	E01	SW-4	Spring Washer	4	209	W-279209-00	Cylinder	1
C02	O-S42	"O" Ring	1	Z03	JAS-0001	Solenoid Valve	1	(B06)	SP-2.56	Spring Pin	1
C03	O-S20	"O" Ring	1	Z04	WAN-0004	Pressure Sensor	1	210	W-279210-00	Cylinder Upper Plate	1
C04	O-S10	"O" Ring	1	CP No.	W-300021-00	Oil Cylinder C.P <BF>		(B07)	SP-1.56	Spring Pin	1
C05	O-S20	"O" Ring	1	226	W-279226-00	Oil Plug	1	211	W-279211-00	Cylinder Lower Plate	1
D01	CS-36S	Cap Screw	2	308	W-279308-00	Spacer	1	214	W-162214-00	Adjusting Washer	1
J01	B-3	Ball	1	385	W-279385-00	Adjusting Screw	1	273	W-300273-00	Cover	1
CP No.	W-300043-00	Housing Harnes C.P		438	W-279438-00	Spindle <B>	1	372	W-300372-00	Plastic Cover	1
117	D-001117-00	Throttle Valve Spring	1	541B	W-252541-00	Button Retainer Spring <F>	1	435	W-300435-00	Thrust Washer	1
201	W-300042-00	Housing	1	551B	W-252551-00	Plug	1	621	W-300621-00	Packing <A>	1
304	W-300204-00	Housing Lower Cover	1	583	W-252583-00	Retainer Button <F>	1	622	W-279622-00	Packing <B>	1
557	W-282557-01	Protector	1	587	W-279587-00	Oil Cylinder	1	651	W-181651-00	Horizontal Hanger	1
C06	O-S14	"O" Ring	1	588	W-300588-00	Oil Cylinder Upper Plate	1	712B	W-300712-01	Damper	1
D02	CS-325	Cap Screw	2	589	W-279589-00	Oil Cylinder Lower Plate	1	A02	BB-6900	Ball Bearing	1
Z01	YZZ-0001	Cable Protector	1	590A	W-279590-00	Spindle Blade	1	A03	BB-6001	Ball Bearing	1
Z02	FET-005-1	Cable	1	590B	W-279590-01	Spindle Blade	1	D04	CS-36B	Cap Screw	4
CP No.	W-300045-00	Reverse Valve Bushing C.P		591	W-279591-00	Blade Spring	2	D05	CS-320	Cap Screw	4
110	W-283110-00	Throttle Valve	1	592	W-300592-00	Cylinder Case	1	D06	CS-320B	Cap Screw	4
113	W-282113-01	Throttle Valve Rod	1	711	W-279711-00	Cylinder Cover	1	D07	CS-412	Cap Screw	4
132	W-282132-01	Reverse Valve Bushing	1	720	W-300720-00	Piston	1	E02	WW-12	Wave Washer	1
C07	O-S17	"O" Ring	1	757	W-279757-00	Needle	1	E03	PW-4K	Plain Washer	4
C08	O-S4	"O" Ring	1	B03	NR-3.056	Needle Roller	2	Z05	NP-1077	Name Plate	1
C09	O-P5	"O" Ring	1	B04	NR-3.056	Needle Roller	2	Z06	NPN-0 x 3.2	Screw Rivet	2
CP No.	W-300001-00	Housing Cover C.P		B05	GP-36G	Grooved Pin	2	Z07	PCA-0002	PC Board <LCD>	1
101	W-300101-00	Housing Cover	1	C16	O-S30(H)	"O" Ring	1	Z08	SGD-0001	Seet Switch	1
551A	W-300551-00	Plug	1	C17	O-S2.5F(H)	"O" Ring	1	Z09	PCA-0005-4.0	Main CPU Board	1
640	W-300640-00	Stop Valve	1	C18	BR-S2.5FT2	Back Up Ring	1				
642	W-300642-00	Stop Valve Rear Cover	1	C19	O-S2F(H)	"O" Ring	1				

□ CP No. denotes the assembled parts comprising of more than 1 pc. of parts.

The related parts are shown in the thick frame.

□ #209, 210 and 438 are supplied together with parts shown in ( ),

□ Specify parts number and quantity in ordering.

■ Standard Accessories : F-701-1 ..... 1.5mm Hex. Pin Wrench 1.

F-705 ..... 5mm Hex. Pin Wrench 1.

FET-007-1 ..... Inlet Hose 1.

\*5m and 10m inlet hoses are also available.

## FET SERIES STANDARD ACCESSORIES

(Included in complete KIT)

MODEL	DESCRIPTION	SIZE	UNIT
FET-001-1	INTERFACE	—	1
FET-003-1	SENSOR CABLE	3m	1
FET-007-1	INLET HOSE (PT)	0.8m	1
FET-007-1N	INLET HOSE (NPT)	0.8m	1
F-701-1	HEX. PIN WRENCH	1.5mm	1
F-705	HEX. PIN WRENCH	5mm	1
E-032070-00	ADAPTOR C.P	—	1
ECO-AC100-2	POWER CABLE	2m	1

※5m and 10m inlet hoses are also available.

## OPTIONAL ACCESSORIES

MODEL	DESCRIPTION	SIZE	UNIT
JN-3/8(B)	HOSE NIPPLE	3/8"	1
AR3000-3/8	AIR REGULATOR	3/8"	1
FET-004-1	PC BOARD & FLOPPY (BASIC SOFTWARE PROGRAM)	—	1
FET-004-1-2	PC BOARD & FLOPPY (DATA LOAD SYSTEM)	—	1
FET-004-2-2	PC BOARD & FLOPPY (FV-NET NETWORK SYSTEM)	—	1
FET-006-20	FV-NET CABLE	20m	1
FET-008-1	PRINTER INTERFACE	—	1

※The different lengths of FV-NET cables are available besides 20m shown in the above. 50m, 100m and 200m cables are suppliable. Please order like FET-006-50, -100 & -200.

※The Printer interface is prepared for hard-copy recording. Please ask us about the further information.

## STANDARD ACCESSORIES



INLET HOSE  
FET-007-1



INTERFACE  
FET-001-1



SENSOR CABLE  
FET-003-1

## OPTIONAL ACCESSORIES



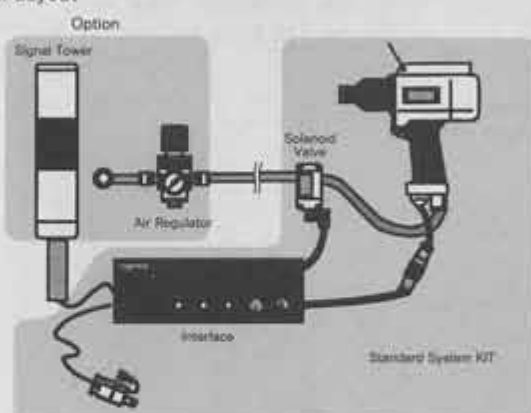
PC BOARD  
FET-004-1



PRINTER  
INTERFACE  
FET-008-1

## FET SYSTEM IN OPERATION

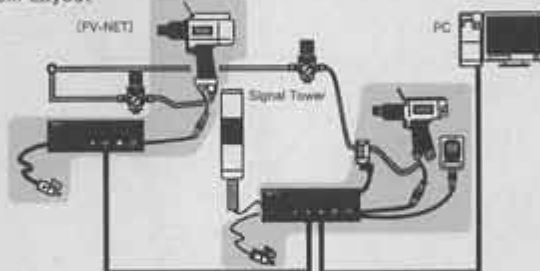
### System Layout



## FV-NET SYSTEM (OPTION)

※It is our FV-NET communication system that makes the best use of the features of FET series. This high-speed communication system can control numbers of tools up to 20 sets at a real time within a distance of 1 kilometer, by utilizing one personal computer with our unique protocol.

### System Layout



## FUJI AIR TOOLS CO., LTD.

2-1-14 Kamiji, Higashinari-ku, Osaka 537-0003, Japan

Tel : (06) 6972-2335

Fax : (06) 6972-2250