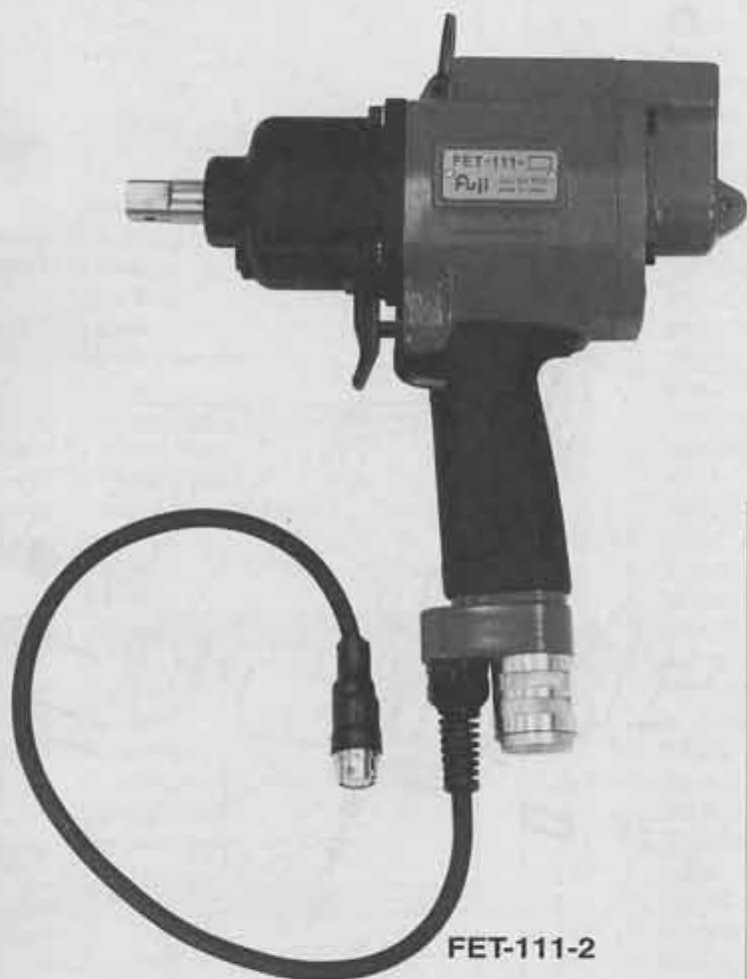




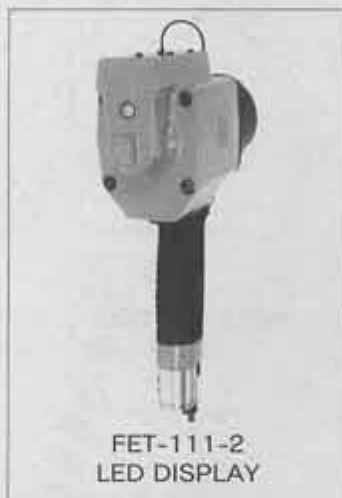
USER MANUAL

F1-SHUT WRENCH

MODELS : FET-111-2



FET-111-2



FET-111-2
LED DISPLAY

SPECIFICATIONS

Model	Bolt Size	Recommended Torque Range			Rotational Frequency	Distance from Center to Side		Square Drive Size		Overall Length		Mass		Air Consumption (At Load)		Air Inlet Thread Size		Air Hose Size	
		mm	N·m	kgf·m		ft·lb	mm	in	mm	in	mm	in	kg	lb	l/min	cfm	in	mm	in
FET-111-2	M10-M12	75-130	7.7-13.3	55.3-95.9	4800	31	1 15/64	12.7	1/2	215	8 15/32	2.4	5.3	0.6	21.2	PT or NPT1/4	9.5	3/8	

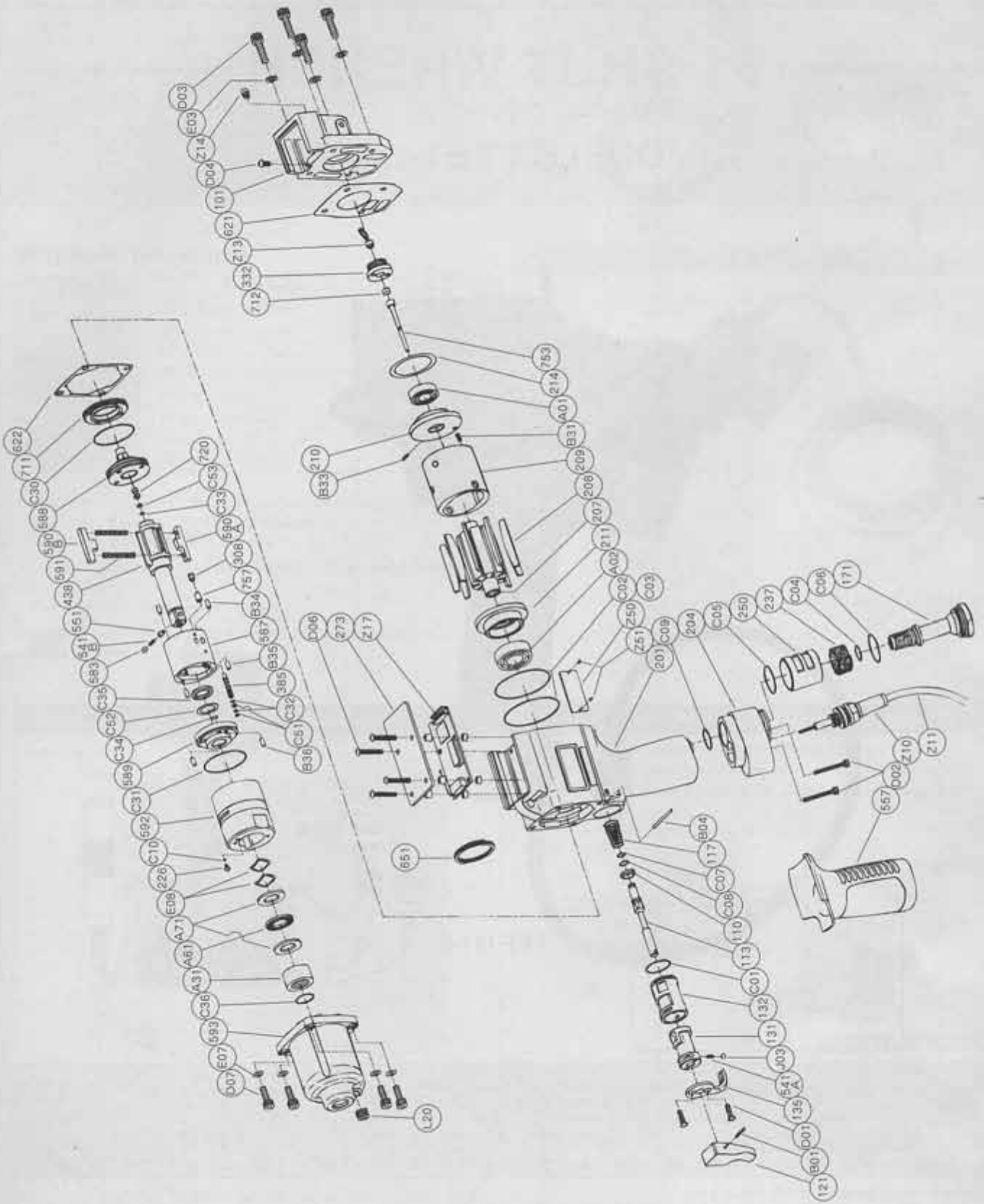
* The performance figures are at 0.63 MPa (6.3 bar).

* This model is required to be used with the related peripheral equipment shown in the FET system list.

Please contact your nearest sales company for the information of the optional equipment and the FV-NET communication system.



- Refer to "The Instructions and Warning for Safety Use" enclosed in each tool box.
- Never give any shock to the FET tool and the interface.
- Never place the tool and the interface near the magnetic field.



Index No.	Parts No.	Parts Name	Qt.
Ass'y No.	W-317006-02	Housing Ass'y	
121	W-283121-00	Throttle Valve Lever	1
131	W-282131-01	Reverse Valve	1
135	W-283135-00	Reverse Valve Lever	1
171	W-283171-00	Inlet Joint <PT> or	1
	W-283171-01	Inlet Joint <NPT>	1
237	W-282237-00	Muffler Pad	1
250	W-283250-01	Exhaust Cover	1
541A	W-252541-00	Button Retainer Spring <F>	1
B01	SP-212	Spring Pin	1
B04	GP-226GLC	Grooved Pin	1
C02	O-S53	"O" Ring	1
C03	O-S53	"O" Ring	1
C04	O-S12	"O" Ring	1
C05	O-S22	"O" Ring	1
C06	O-S22	"O" Ring	1
D01	CS-36S	Cap Screw	2
J03	B-3	Ball	1
Ass'y No.	W-317043-00	Housing Hernes Ass'y	
117	W-282117-01	Throttle Valve Spring	1
201	W-317042-00	Housing	1
204	W-315204-00	Housing Lower Cover	1
557	W-282557-01	Protector	1
C09	O-S16	"O" Ring	1
D02	CS-325	Cap Screw	2
Z10	YZZ-0001	Cable Protector	1
Z11	FET-005-1	Cable	1
Ass'y No.	W-300045-00	Reverse Valve Bushing Ass'y	
110	W-283110-00	Throttle Valve	1
113	W-282113-01	Throttle Valve Rod	1
132	W-282132-01	Reverse Valve Bushing	1
C01	O-S17	"O" Ring	1
C07	O-S4	"O" Ring	1
C08	O-P5	"O" Ring	1
Ass'y No.	W-317001-00	Housing Cover Ass'y	
101	W-317101-00	Housing Cover	1
332	W-303332-00	Lock Nut	1
712	W-300712-00	Damper	1
753	W-301753-00	Piston Rod	1
D03	CS-520	Cap Screw	4
E03	SW-5	Spring Washer	4
Z13	WAN-0004	Pressure Sensor	1
Z14	LAS-0001	LED Lamp	1
Ass'y No.	W-315021-03	Oil Cylinder Ass'y <BF>	
226	W-184226-00	Oil Plug	1
308	W-281308-00	Spacer	1
385	W-282385-00	Adjusting Screw	1
438	W-282438-01	Spindle 	1
(541B)	W-224541-00	Button Retainer Spring <F>	1
(551)	W-224551-00	Plug	1
(583)	W-224583-00	Retainer Button <F>	1
587	W-282587-00	Oil Cylinder	1

Index No.	Parts No.	Parts Name	Qt.
588	W-315588-00	Oil Cylinder Upper Plate	1
589	W-258589-00	Oil Cylinder Lower Plate	1
590A	W-258590-00	Spindle Blade <A>	1
590B	W-258590-01	Spindle Blade 	1
591	W-258591-00	Blade Spring	2
592	W-258592-00	Cylinder Case	1
711	W-223711-00	Cylinder Cover	1
720	W-300720-00	Piston	1
757	W-282757-00	Needle	1
B34	NR-3.057	Needle Roller	2
B35	NR-3.057	Needle Roller	2
B36	GP-36GCH	Grooved Pin	2
C10	O-S3(H)	"O" Ring	1
C30	O-S42(H)	"O" Ring	1
C31	O-S40(H)	"O" Ring	1
C32	O-S2F(H)	"O" Ring	2
C33	O-S2.5F(H)	"O" Ring	1
C34	O-S5(H)	"O" Ring	1
C35	O-KX16(H)	"X" Ring	1
C51	BR-S2.5FT2	Back Up Ring	2
C52	BR-115	Back Up Ring	1
C53	BR-S2.5FT2	Back Up Ring	1
Ass'y No.	W-315033-01	Front Case Ass'y	
593	W-315593-01	Front Case	1
A31	NB-RNA4901	Needle Bearing	1
L20	PL-1/8	Plug	1
207	W-315207-00	Rotor	1
208	W-282208-00	Rotor Blade	9
209	W-282209-00	Cylinder	1
(B31)	SP-2.58	Spring Pin	1
210	W-282210-00	Cylinder Upper Plate	1
(B33)	SP-26	Spring Pin	1
211	W-282211-00	Cylinder Lower Plate	1
214	W-133214-00	Adjusting Washer	1
273	W-317273-00	Cover	1
621	W-315621-00	Packing <A>	1
622	W-223622-00	Packing 	1
651	W-181651-00	Horizontal Hanger	1
A01	BB-6901	Ball Bearing	1
A02	BB-6902	Ball Bearing	1
A61	NB-NTB1629	Thrust Needle Bearing	1
A71	TW-AS1629	Thrust Washer	2
C36	O-S16	"O" Ring	1
D04	CS-36B	Button Cap Screw	1
D06	CS-320B	Button Cap Screw	4
D07	CS-516	Cap Screw	4
E07	PW-5K	Plain Washer	4
E08	WW-16	Wave Washer	2
Z17	PCA-0005-4.1	Main CPU Board	1
Z50	NP-2060	Name Plate	1
Z51	NPN-0×3.2	Screw Rivet	2

Ass'y No. denotes the assembled parts comprising of more than 1 pc. of parts.

■ Standard Accessories:

The related parts are shown in the thick frame.

F-712-1 2mm Hex. Pin Wrench I.

#209, 210 and 438 are supplied together with parts shown in ().

F-705 5mm Hex. Pin Wrench I.

Specify parts number and quantity in ordering.

FET Series Standard Accessories

(Included in Complete KIT)

AC No.	Description	Size	Qt.
FET-001-1	Interface	—	1
FET-002-1	Commander	—	1
FET-003-1	Sensor Cable	3m	2
ECO-AC100-2	Power Cable	2m	1
E-032070-00	Adapter Assembly	—	1
AR4000-1/2	Air Regulator	1/2"	1
ESV-VP742-B	12V Solenoid Valve	1/2"	1
JN-1/2(B)	Hose Nipple	1/2"	1
M-527	Hose Coupler Socket	1/2"	1
M-629	Plug	1/2"	1

Optional Accessories

AC No.	Description	Size	Qt.
FET-004-1-2	CPU Board & Floppy (Data Load System)	—	1
FET-004-2-2	CPU Board & Floppy (FV-NET Network System)	—	1
FET-006-20	FV-NET Cable	20m	1
FET-008-1	Printer Interface	—	1
FET007-11*	Twin Hose <PT>	11φ	1
FET007-11*N	Twin Hose <NPT>	11φ	1

*The different lengths of FV-NET cables are available besides 20m shown in the above. 50m, 100m and 200m cables are supplyable.
Please order like FET-006-50, -100 & -200.

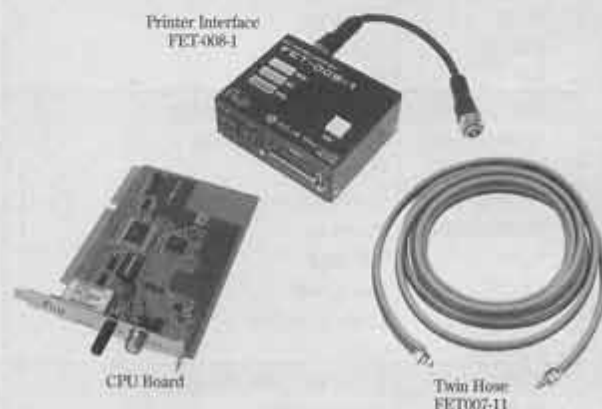
*Fastening data can be printed out with FET-008-1 printer interface (option) and printer (option).
Please contact us suitable printer selection.

*5 different lengths of the Twin Hose are available ; 3m,5m,6m,10m and 15m.
Please specify the length in ordering.

Standard Accessories

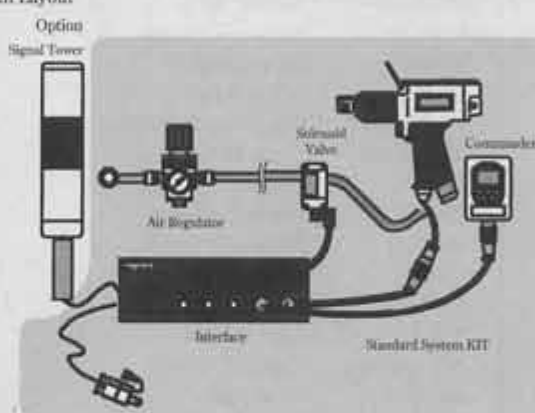


Optional Accessories



FET System in Operation

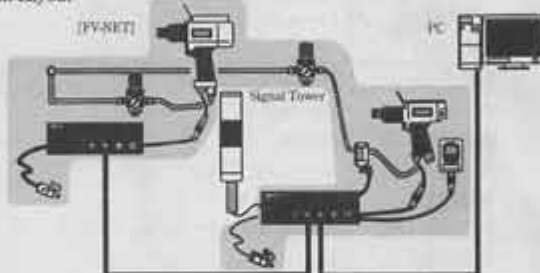
System Layout



FV-NET System (Option)

*It is our FV-NET communication system that makes the best use of the features of FET series. This high-speed communication system can control numbers of tools up to 20 sets at a real time within a distance of 1 kilometer, by utilizing one personal computer with our unique protocol.

System Layout



FUJI AIR TOOLS CO., LTD.

2-1-14 Kamiji, Higashinari-ku, Osaka, 537-0003 Japan

Tel : (06)6972-2335

Fax : (06)6972-2250